



U.P Expressway Industrial Development Authority (UPEIDA)

invites

Expression of Interest and Request for allotment of Industrial plots

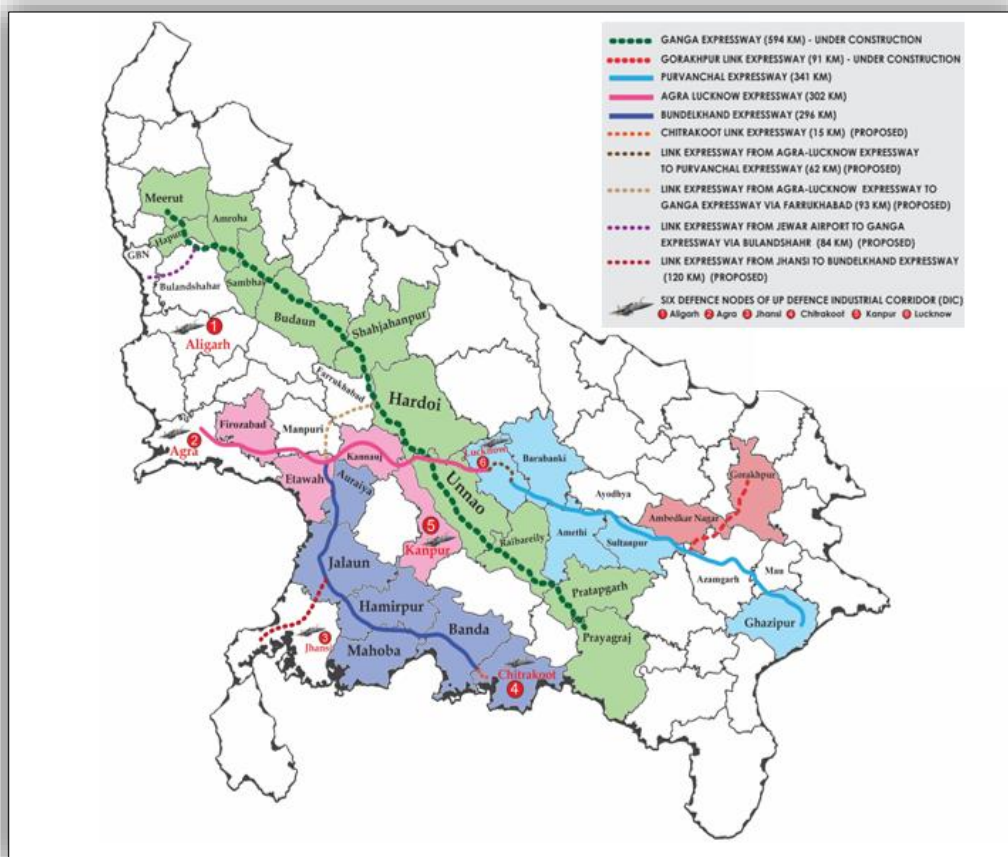
from

Investors and Developers

for

Tailor made Industrial Plots including Defence Industries / Bulk Allotments and for Development of Industrial Parks on Public Private Partnership (PPP) mode at

27 Integrated Manufacturing & Logistic Clusters (IMLCs) & 6 Defence Industrial Corridor (DIC) Nodes



5thFloor, Block-A, PICUP Bhawan, Vibhuti Khand, Gomti Nagar, Lucknow, U.P.-226010

For any query, Contact: +91-9935779991, Web: <https://upeida.up.gov.in>

mail to: imlc.upeida@gmail.com

Contents

1	Disclaimer	4
2	Uttar Pradesh Expressways Industrial Development Authority (UPEIDA).....	5
3	Uttar Pradesh Integrated Manufacturing Logistics Clusters (IMLCs).....	6
4	Vision of the Integrated Manufacturing & Logistics Clusters (IMLCs)	7
5	Uttar Pradesh Defence Industrial Corridor (UPDIC)	8
6	Vision of the Defence Nodes (DIC)	8
7	Objectives of the Expression of Interest (EOI).....	9
8	Benefits to Interested Investors and Developers	9
9	Location Details of IMLCs and Defence Nodes.....	12
10	Proposed IMLCs along Ganga Expressway	14
10.1	Meerut.....	15
10.2	Hapur	17
10.3	Amroha	19
10.4	Sambhal	21
10.5	Badaun.....	23
10.6	Shahjahanpur.....	25
10.7	Hardoi	27
10.8	Unnao	29
10.9	Raebareli.....	31
10.10	Pratapgarh.....	33
10.11	Prayagraj.....	35
11	Proposed IMLCs along Agra – Lucknow Expressway	37
11.1	Firozabad	38
11.2	Etawah	40
11.3	Kannauj.....	42
12	Proposed IMLCs along the Purvanchal Expressway	44

12.1	Barabanki	45
12.2	Amethi	47
12.3	Sultanpur	49
12.4	Ambedkar Nagar	51
12.5	Ghazipur	53
13	Proposed IMLCs along Gorakhpur Link Expressway	55
13.1	Ambedkar Nagar	56
13.2	Gorakhpur	58
14	Proposed IMLCs along Bundelkhand Expressway	60
14.1	Auraiya	61
14.2	Jalaun	63
14.3	Mahoba	65
14.4	Hamirpur	67
14.5	Banda	69
14.6	Chitrakoot	71
15	UPDIC Nodes	73
15.1	Jhansi	73
15.2	Chitrakoot	75
15.3	Agra	77
15.4	Aligarh	79
15.5	Lucknow	81
15.6	Kanpur	83
16	Uttar Pradesh Sectoral Policies & Government Order	86
17	Eoi Submission Form	88

1 Disclaimer

This Expression of Interest ("EOI") document has been prepared by the **Uttar Pradesh Expressways Industrial Development Authority (UPEIDA)** for the limited purpose of soliciting interest and gathering inputs from potential industrial stakeholders for demand assessment related to the proposed **Integrated Manufacturing and Logistics Clusters (IMLC) and Defence Industrial Corridor (DIC) Nodes** in Uttar Pradesh.

The information contained in this EOI or subsequently provided to the interested parties, whether in oral, written, electronic, or any other form, by or on behalf of UPEIDA or any of its employees, advisors, or representatives, is provided on the terms and conditions set out in this document and such other terms as may be prescribed from time to time.

This EOI is not a binding agreement, nor does it constitute an offer or invitation to acquire any right or benefit. The sole purpose of this EOI is to obtain preliminary, non-binding expressions of interest to assess market demand and plan future development accordingly. It does not constitute and shall not be deemed to constitute any commitment on the part of UPEIDA to proceed with any allotment, project, or transaction.

The information in this document is based on assumptions, internal assessments, and available data, which may be subject to change. UPEIDA makes no representation or warranty as to the accuracy, completeness, reliability, or correctness of the information provided herein. Interested parties are advised to carry out their own due diligence, investigations, and analysis before acting on any information provided in this EOI. UPEIDA shall not be held liable for any loss or damage arising from the use of this document or reliance upon the contents herein.

Nothing contained in this EOI shall be construed to give rise to any right, title, interest, or claim by any party against UPEIDA or its representatives. UPEIDA reserves the right to withdraw, amend, or cancel this EOI at any time without assigning any reason and without incurring any liability whatsoever.

2 Uttar Pradesh Expressways Industrial Development Authority (UPEIDA)

The Government of Uttar Pradesh has constituted **Uttar Pradesh Expressways Industrial Development Authority (UPEIDA)** under the UP Industrial Area Development Act, 1976, through Notification No. 4246/77-4-07-94 Bha/07TC, dated December 27, 2007. UPEIDA's mission is to develop expressways, industrial and defence corridors in Uttar Pradesh.

UPEIDA has been instrumental in promoting defence manufacturing with a focus on 'Atmanirbharta' (self-reliance) through Uttar Pradesh Defence Industrial Corridor (UPDIC) and now, plans to catalyse regional socio-economic growth through the development of Integrated Manufacturing and Logistics Clusters (IMLCs) throughout the State.

The Authority oversees the planning, construction, and operation of several key expressways, and has successfully implemented the Agra–Lucknow Expressway, Purvanchal Expressway, and Bundelkhand Expressway, all of which are access-controlled greenfield expressways. The Gorakhpur Link Expressway and the Ganga Expressway are currently nearing completion.

These expressways aim to reduce travel time and promote economic development by facilitating smoother transportation of goods and people across the region. The Authority has also taken steps toward environmental sustainability by planning for solar-powered streetlights, EV charging stations, and other public amenities.

UPEIDA has ambitious plans to develop several new expressways aimed at easing commutation and transportation across Uttar Pradesh, while also enhancing connectivity with adjacent states. These projects are expected to create significant opportunities for economic growth, particularly in the logistics sector.

Some of the proposed expressways include:

- Chitrakoot Link Expressway
- Link Expressway connecting the Agra–Lucknow Expressway to the Purvanchal Expressway
- Link Expressway from the Agra–Lucknow Expressway to the Ganga Expressway via Farrukhabad
- Link Expressway from the Ganga Expressway to Jewar Airport
- Jhansi-Link Expressway connecting Bundelkhand Expressway

UPEIDA has established the Uttar Pradesh Defence Industrial Corridor (UPDIC), an ambitious project aimed at enhancing India's self-reliance in defence manufacturing and reducing dependence on foreign imports in the defence sector. UPDIC spans six key nodes - Lucknow, Kanpur, Jhansi, Agra, Aligarh, and Chitrakoot covering the central, eastern, and western regions of Uttar Pradesh.

The most recent initiative of UPEIDA is to develop 27 Integrated Manufacturing and Logistics Clusters (IMLCs) across 27 districts of Uttar Pradesh along Expressways to provide land for the Manufacturing and Logistics and Warehousing sector.

3 Uttar Pradesh Integrated Manufacturing Logistics Clusters (IMLCs)

The **Uttar Pradesh Expressways Industrial Development Authority (UPEIDA)** plans to develop **Integrated Manufacturing and Logistics Clusters (IMLCs)** within 27 Industrial Nodes along the State's 5 major expressways at strategic locations. These IMLCs are planned in the following districts:

- Meerut, Hapur, Amroha, Sambhal, Budaun, Shahjahanpur, Hardoi, Unnao, Raebareli, Pratapgarh, Prayagraj (along **Ganga Expressway**)
- Firozabad, Etawah, Kannauj (along **Agra–Lucknow Expressway**)
- Chirtakoot, Banda, Hamirpur, Mahoba, Jalaun, Auraiya (along **Bundelkhand Expressway**)
- Barabanki, Amethi, Sultanpur, Ghazipur, Ambedkarnagar (along **Purvanchal Expressway**)
- Gorakhpur, Ambedkarnagar (along **Gorakhpur Link Expressway**)

These IMLCs aim to synergize industrialization with the expressway network in Uttar Pradesh. **With a land bank of over 5,300 hectares** these proposed IMLCs are spread across **27 locations in 26 districts**.

The IMLCs are planned to accommodate a mix of industrial, logistics, and warehousing units with the objective of promoting regional growth, creating employment opportunities, and enhancing Uttar Pradesh's global competitiveness. By leveraging each region's inherent strengths—such as Agro-based industries, traditional manufacturing bases, and connectivity advantages, these clusters shall enable seamless integration of transport networks (road, rail, and air), reduce logistics costs, and attract Industrial investment.

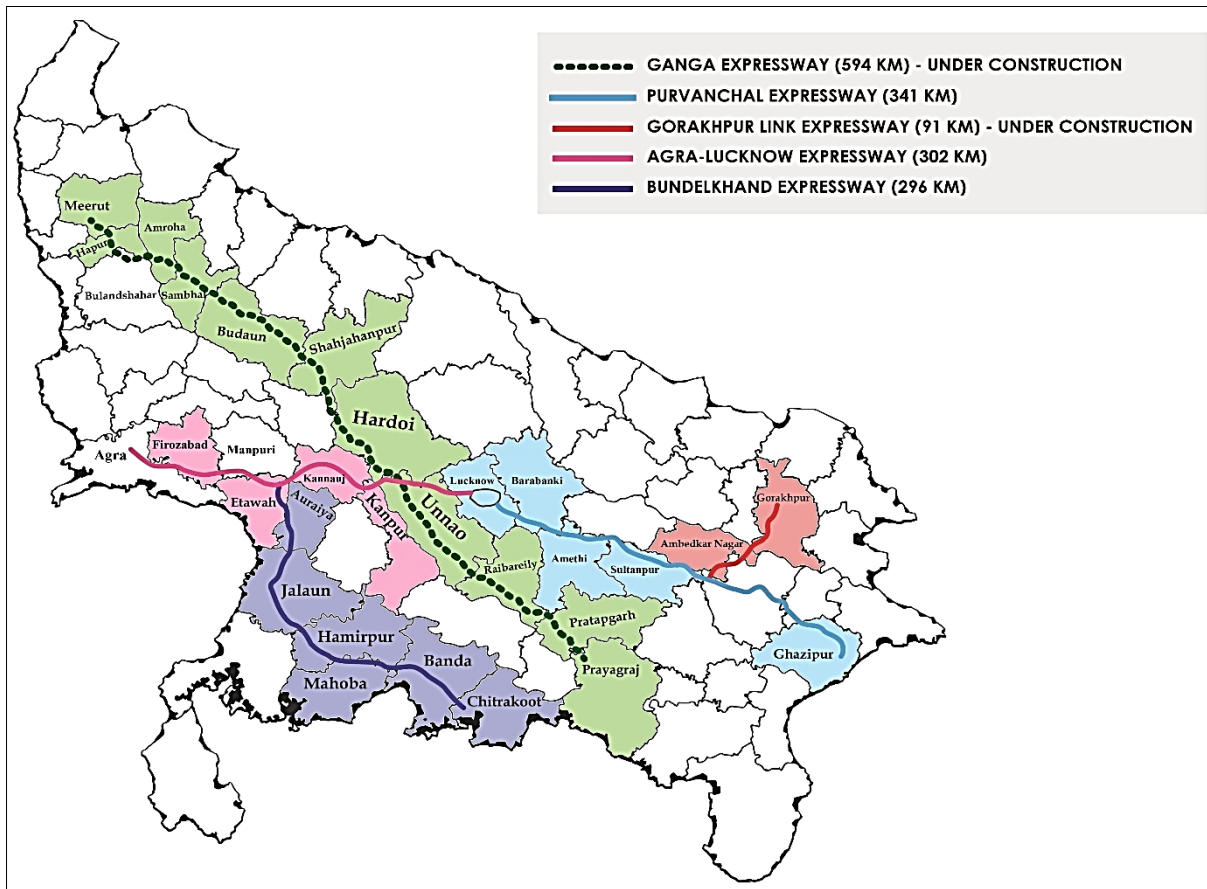


Figure 1: IMLCS Map

4 Vision of the Integrated Manufacturing & Logistics Clusters (IMLCs)

The Integrated Manufacturing & Logistics Clusters (IMLCs), envisioned by U.P. Expressway Industrial Development Authority (UPEIDA), are envisioned to transform Uttar Pradesh into a powerhouse of industrial and economic growth by harnessing the state’s strategic location, robust connectivity, and regional strengths.

These IMLCs aim to:

- **Facilitate the availability of land to eligible industrial, warehousing, and logistics units**, offering developed plots that meet the evolving needs of diverse industries and sectors.
- **Ensure comprehensive planning and development of infrastructure**, supported by post-allotment facilitation, to enable smooth setup, and efficient operations.

- **Develop world-class industrial, warehousing, and logistics ecosystems** that support manufacturing, supply chains, drive economic diversification and attract both national and international investors and developers.
- **Improve logistics efficiency** by leveraging the state's expressway network to reduce transit times and lower logistics costs.

5 Uttar Pradesh Defence Industrial Corridor (UPDIC)

The Uttar Pradesh Expressways Industrial Development Authority (UPEIDA) is in the process of developing 6 Nodes as part of the UP Defence Industrial Corridor. These Node namely Aligarh, Agra in Paschimanchal Region, Lucknow, Kanpur in Madhyanchal Region and Jhansi, Chitrakoot in Bundelkhand region of UP are thought fully located in the primary and the secondary catchment areas of the Existing as also the upcoming National and Express Highways.

Uttar Pradesh envisions becoming a pioneering Aerospace and Defence hub, driving indigenous capabilities, innovation, and global collaboration to ensure national security and economic prosperity. With the objective of accelerating economic growth, tech advancement and self-reliance in defence sector the state of UP has come up with the second version of its UP Aerospace and Defence units & Employment Promotion Policy 2024 offering great incentives on investment in this sector. With this the State has set in motion a Policy which has a mission to empower UP A&D sector through innovation, collaboration and excellence & tech advancement by creating a robust, world class & technically efficient A&D manufacturing ecosystem, attracting global & Indian Investors & facilitating establishment of state of the art cutting edge defence testing labs, collaborating with Institutes of international repute to provide R&D solution to the defence related problem statement.

With a land bank of over 2097 Ha of which 1000+Ha already allotted to 58 Industries bringing a propose investment of Rs 9742Cr and expected direct employment generation of 13736 personnels. With above visibility, UPDIC is Fastly emerging as the dream investment destination for both domestic & foreign defence manufacturers.

6 Vision of the Defence Nodes (DIC)

The Defence Nodes, conceptualized under the strategic leadership of U.P. Expressway Industrial Development Authority (UPEIDA), aim to position Uttar Pradesh as a premier hub for defence manufacturing and allied industries by leveraging policy support, infrastructure readiness, and investor facilitation.

- Promote indigenous defence manufacturing in alignment with the “Make in India” and “Atmanirbhar Bharat” initiatives, fostering self-reliance in defence production.
- Develop integrated, secure, and state-of-the-art industrial ecosystems tailored for defence, aerospace, and ancillary sectors, including MSMEs and large enterprises.
- Facilitate seamless access to strategically located, well-connected land parcels, complemented by robust infrastructure, regulatory handholding, and post-allotment support.
- Attract national and international defence manufacturers, investors, and innovators to establish production, testing, and R&D facilities in Uttar Pradesh.

7 Objectives of the Expression of Interest (EOI)

The **U.P. Expressways Industrial Development Authority (UPEIDA)** invites Expressions of Interest (EOI) from investors and developers to undertake an investment requirement analysis for tailor-made industrial plots, substantial contiguous land parcels (Bulk Land/Node) purchase for industrial or logistics/warehousing operations, and for the development of Integrated Manufacturing & Logistics Clusters (IMLCs), including Industrial Parks within these clusters, under the Public-Private Partnership (PPP) mode across 27 IMLC nodes in Uttar Pradesh. The primary objective for IMLCs is to assess and understand the investment interests, infrastructure needs, and development preferences of potential stakeholders from the manufacturing, logistics, and warehousing sectors. This will enable UPEIDA to design and offer customized plot sizes, determine demand-driven infrastructure requirements, and finalize viable development models—including options for investors and developers interested in setting up industrial parks on PPP basis through models such as DBFOT or BOT.

For the Defence Nodes under the Uttar Pradesh Defence Industrial Corridor (UPDIC), the objective of this EOI is to assess investment interests, land and infrastructure requirements, and development preferences of stakeholders in the defence and aerospace sectors—including OEMs, MSMEs, and R&D institutions—across the six designated nodes: Lucknow, Kanpur, Jhansi, Chitrakoot, Agra, and Aligarh. This EOI seeks to conduct an investment requirement analysis for tailor-made industrial plots and substantial contiguous land parcels (Bulk Land/Node) allotment for eligible defence and aerospace industries. Unlike IMLCs, Defence Nodes are not proposed to be developed under PPP mode. The responses to this EOI will help UPEIDA plan land allocations, node-specific infrastructure, and common facilities such as testing labs, utilities, and R&D zones, aligned with the objectives of "Make in India" and "Atmanirbhar Bharat", thereby positioning UPDIC as a leading destination for indigenous, self-reliant, and innovation-driven defence manufacturing.

This EOI is open to:

- Investors interested in establishing industrial/defence industrial or logistics/warehousing operations within the IMLCs on tailor-made industrial plots.
- Investors/Large Industries/Defence Industries interested in allotment of bulk land/entire Node for establishing their units/subsidiaries.
- PPP partners and Developers (applicable to IMLCs only) who wish to collaborate on infrastructure development through models such as DBFOT or BOT with revenue-sharing arrangements to be finalized in consultation with UPEIDA.

Through this EOI, UPEIDA aims to:

- Provide detailed information about each of the 27 proposed Industrial Nodes and 6 Defence Industrial Nodes to aid investor and developer decision-making.
- Gather insights on investment demand and preferences for plot sizes, infrastructure, and support facilities.
- Identify potential PPP models best suited for rapid, sustainable development of IMLCs.
- This EOI will serve as a strategic planning tool for UPEIDA, helping shape infrastructure provisions, land allotment strategies, and partnership models based on real market inputs. UPEIDA envisions these nodes as vibrant industrial, defence manufacturing, warehousing, and logistics hubs.
- UPEIDA encourages all interested stakeholders to share their investment and development intent in the prescribed format. Respondents to this EOI will be considered for preferred investor/developer status, with early access to detailed cluster data, dedicated facilitation, and support during the launch of allotments and project implementation phases.
- Ultimately, this initiative aims to align infrastructure development with real investor needs, catalyze industrial growth, and transform Uttar Pradesh into a premier investment destination through a proactive, partnership-driven approach.

8 Benefits to Interested Investors and Developers

UPEIDA invites both **investors and developers** to send their feedback or responses on this EOI in the format provided. Investors responding to this EOI shall be recognized as **preferred investors** and shall receive **individual assistance during the launching of the plots for allotment**. Investor shall receive information on all industrial plot locations in their preferred nodes along expressways with seamless connectivity. UPEIDA endeavours to provide well-planned and appropriately sized industrial plots to

suit investor requirements, supported by world-class infrastructure. Investors will also benefit from a **business-friendly environment backed by proactive state policies and facilitation by UPEIDA**, along with end-to-end post-allotment assistance to ensure hassle-free unit establishment. Investors can leverage the unique sectoral strengths of different regions in Uttar Pradesh to support economic growth and position themselves at the forefront of the State's industrial and logistics transformation.

For investors interested in the **Uttar Pradesh Defence Industrial Corridor (UPDIC)**, UPEIDA offers dedicated support for the allotment of tailor-made industrial plots and bulk land parcels across six strategic Defence Nodes. Respondents to this EOI will be considered for preferred investor status and will receive early access to node-specific data, facilitation under the UP Defence and Aerospace Policy, and assistance with infrastructure provisioning and regulatory clearances. Investors will benefit from UPDIC's robust ecosystem, strong connectivity, and proactive policy framework focused on self-reliance, innovation, and ease of doing business in the defence manufacturing sector.

Large-scale industries or enterprise groups looking to establish end-to-end manufacturing ecosystems across substantial land parcels or entire clusters will receive exclusive attention from UPEIDA. Such investors will benefit from early engagement, and the flexibility to design integrated facilities that include manufacturing units, logistics parks, warehousing zones, and allied services. UPEIDA shall provide strategic facilitation through fast-track clearances, single-window assistance, and policy-linked incentives, ensuring seamless project grounding. By positioning themselves as anchor industries within the IMLCs/DICs, these enterprises will have the opportunity to shape regional industrial ecosystems and create long-term value through forward and backward linkages.

In addition, **Developers responding to this EOI shall gain early access to strategic, government-backed industrial projects** details with strong facilitation support from UPEIDA. Developers will have the opportunity to **collaborate on large-scale industrial, logistics, and warehousing projects** across prime expressway-connected sites, benefiting from streamlined approval processes, clear land titles and dedicated support from UPEIDA. They will be able to design and construct world-class facilities that attract industrial tenants and long-term anchor clients, creating new revenue streams through leases, joint ventures, or built-to-suit industrial spaces. Furthermore, UPEIDA offers the possibility of engaging developers **under a revenue-sharing model**, wherein developers will plan, finance, build, and operate infrastructure facilities, with the **specific model and terms to be finalized** in consultation with developers after receiving responses to this EOI.

PPP participants will have the opportunity to enter long-term concession agreements for infrastructure development and operation. Depending on the mutually agreed DBFOT or BOT revenue-sharing

model, participants may recover their investment through mechanisms such as lease rental income, developer-user charges, or long-term sub-leasing arrangements. The specific structure and commercial terms shall be finalized in consultation with UPEIDA, keeping in mind the sustainability and viability of the project.

9 Location Details of IMLCs and Defence Nodes

The locations of the proposed IMLC and Defence nodes can be viewed by clicking the Google Maps link provided in the table.

Integrated Manufacturing and Logistic Clusters (IMLCs) & Defence Node						
S.No.	Along the Expressway	IMLC Node	Location	LAT	LONG	On Google Map
1	Ganga Expressway	Unnao	Center	26.570513	80.584857	View Location
2		Meerut	Center	28.852676	77.751807	View Location
3		Hapur	Center	28.690171	78.067895	View Location
4		Sambhal	Center	28.540769	78.491098	View Location
5		Hardoi	Center	27.506319	79.746282	View Location
6		Amroha	Center	28.657327	78.270035	View Location
7		Badaun	Center	28.113994	79.213703	View Location
8		Shahjahanpur	Center	27.736214	79.69619	View Location
9		Raebareli	Center	26.00158	81.279063	View Location
10		Pratapgarh	Center	25.878312	81.562755	View Location
11		Prayagraj	Center	25.576571	81.815385	View Location
1	Bundelkhand Expressway	Chitrakoot	Center	25.364695	81.001339	View Location
2		Banda	Center	25.538499	80.39566	View Location
		Banda	Center	25.527986	80.394535	View Location
3		Hamirpur	Center	25.626391	79.694366	View Location
4		Mahoba	Center	25.580541	80.075058	View Location
5		Jalaun	Center	25.890602	79.413663	View Location
6	Auraiya	Center	26.49671	79.437422	View Location	
1	Agra - Lucknow Expressway	Firozabad	Center	26.990961	78.573591	View Location
2			Center	26.798511	79.322242	View Location
		Etawah	Center	26.792448	79.320096	View Location
3		Kannauj	Center	26.911222	79.884637	View Location
1	Purvanchal Expressway	Barabanki	Center	26.627494	81.376684	View Location
2		Amethi	Center	26.562373	81.557145	View Location
3		Sultanpur	Center	26.335848	82.277714	View Location
4		Ghazipur	Center	25.613192	83.836557	View Location
5		Ambedkar Nagar	Center	26.321176	82.504369	View Location
1	Gorakhpur Link Expressway	Gorakhpur	Center	26.449518	83.150076	View Location

EOI for 27 IMLC & 6 DIC

2		Ambedkar Nagar	Center	26.298686	82.85592	View Location
Defence Node						
1	Defence Nodes	Agra (Ph1+Ph2)	Center	27.140218	78.15014	View Location
2		Aligarh Phase II	Center	27.833163	78.196809	View Location
3		Chitrakoot	Center	25.350441	80.990773	View Location
4		Lucknow	Center	26.718076	80.770747	View Location
5		Jhansi	Center	25.751281	79.087862	View Location
6		Kanpur	Center	26.223793	80.354207	View Location

10 Proposed IMLCs along Ganga Expressway

The proposed **Integrated Manufacturing and Logistics Clusters (IMLCs)** along the **594 km Ganga Expressway** are set to redefine Uttar Pradesh's industrial and logistics landscape, positioning the state as a national powerhouse of growth and connectivity. Strategically planned across **ten key locations Meerut, Hapur, Amroha, Sambhal, Budaun, Shahjahanpur, Hardoi, Unnao, Rae Bareilly, Pratapgarh, and Prayagraj**— these clusters are not just industrial zones but **engines of regional transformation**, tapping into the unique strengths of each area, from vibrant agricultural belts to thriving manufacturing hubs. Carefully selected for their prime accessibility, connectivity, and expansion potential, these sites will act as **multimodal superhubs**, seamlessly integrating road, rail, and future transport networks to dramatically lower logistics costs and turbocharge supply chain efficiency.

UPEIDA's vision goes beyond infrastructure—it's about creating a **dynamic ecosystem** where industry, logistics, and warehousing thrive side by side, attracting robust private investments and unlocking a wave of economic activity along the entire expressway corridor. These clusters will not only catalyze industrial expansion but will also generate employment, promote local enterprise, and accelerate Uttar Pradesh's march toward becoming one of India's most competitive and sought-after destinations for manufacturing and logistics excellence.

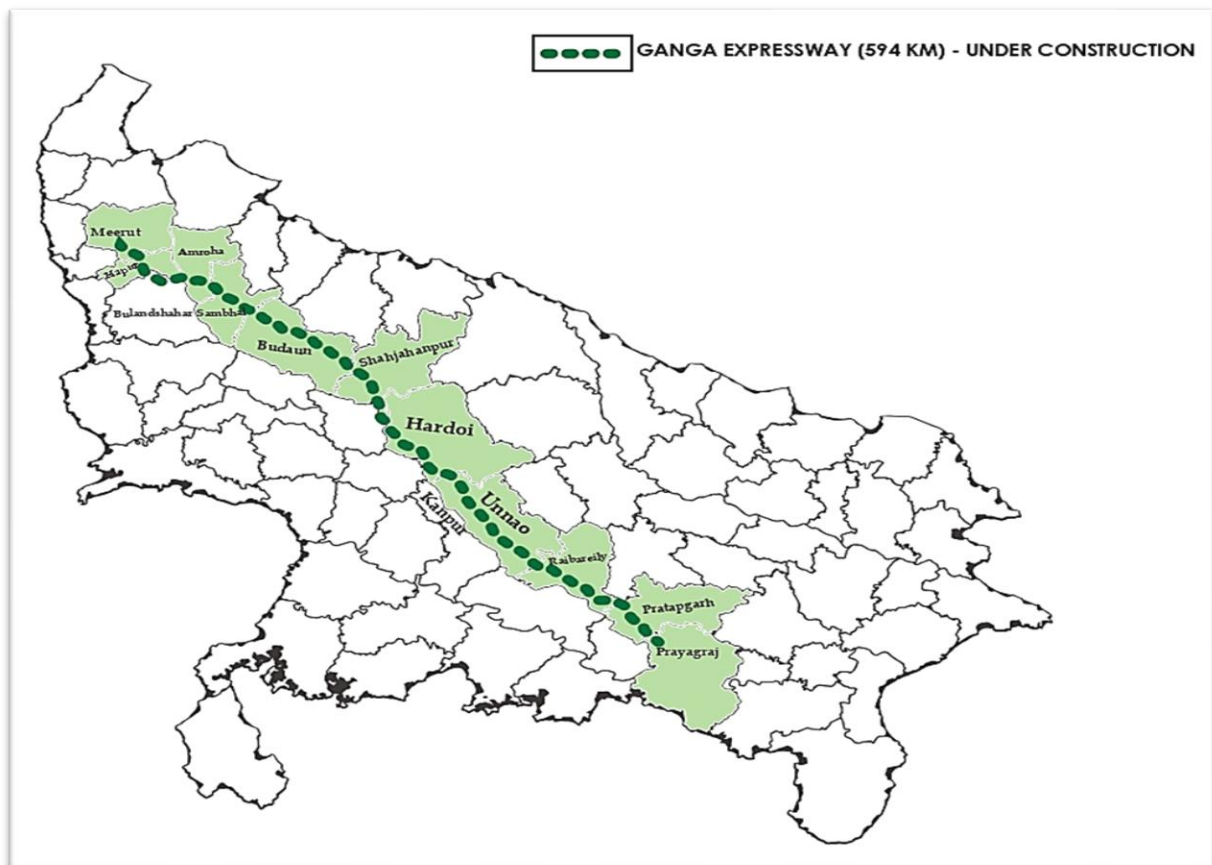


Figure 2: Proposed IMLCs along Ganga Expressway

10.1 Meerut

Meerut district, located in western Uttar Pradesh, is an important urban, educational, and commercial center with its administrative headquarters at Meerut city. It shares boundaries with Muzaffarnagar, Bijnor, Hapur, Bulandshahr, and Baghpat, and enjoys excellent connectivity through NH-34, NH-709, NH-58, and NH-119, as well as the Ganga Expressway. The district is strategically positioned along the Eastern Dedicated Freight Corridor (EDFC), significantly enhancing logistics efficiency and industrial potential. Furthermore, the upcoming Delhi–Meerut Regional Rapid Transit System (RRTS) will offer high-speed commuter transit, improving access for the workforce and strengthening regional integration.



Figure 3: Location Map

The **proposed Integrated Manufacturing and Logistics Cluster (IMLC)** in Meerut, located in village **Bijauli and Kharkhoda** under Tehsil Sadar and spread over approximately **529 Acre**, is strategically positioned to maximize industrial potential. Situated just 9 km from Meerut city, the site lies at the **starting point of the Ganga Expressway, at kilometre 10 (Ch 10+000) on the right-hand side of the expressway**. It offers seamless multimodal connectivity through NH-34, the Ganga Expressway, and close proximity (approx 10 Km) Eastern Dedicated Freight Corridor (EDFC), making it highly suitable for logistics, warehousing, and a wide range of industrial activities. The location map for the proposed is represented in figure

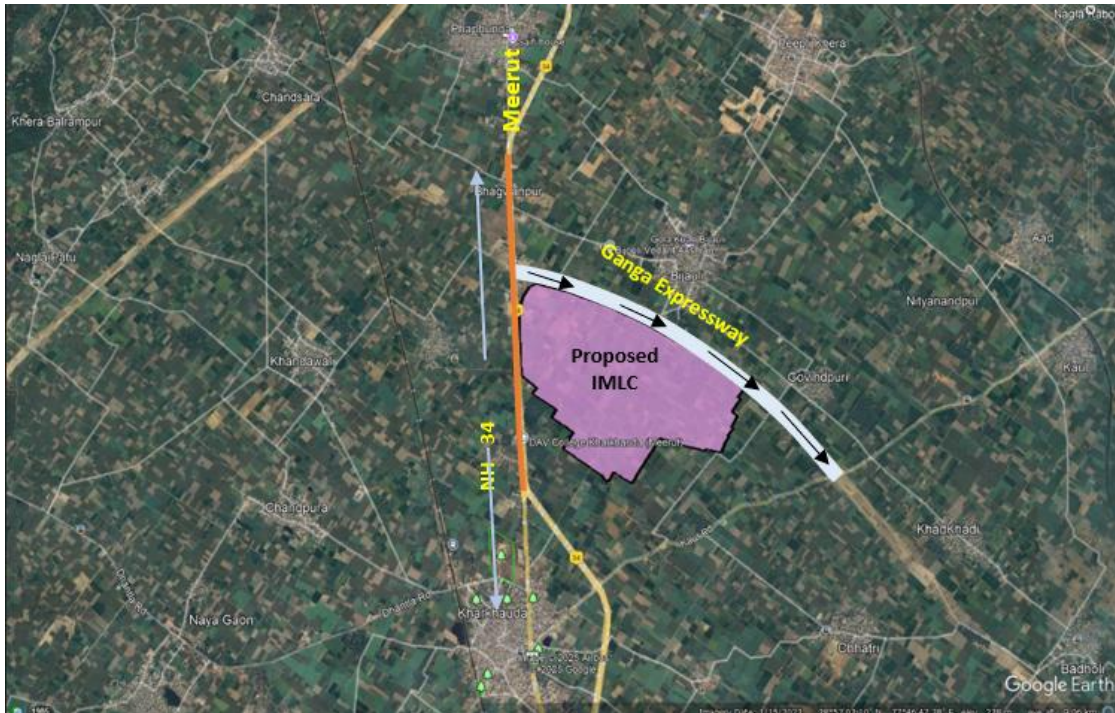


Figure 4: Proposed Site on Google Map

The details of proposed site are provided in the table below-

Sl.No.	Description	
1	Development Type	Greenfield
2	Location	This site is located in Tehsil Sadar of Meerut district, positioned along NH-34 and at kilometre 10+1000 (Ch-10+000 RHS) on the right-hand side (RHS) of the Ganga Expressway, near its starting point.
3	Lat/Long	28.852676/ 77.751807
4	Nearest Railway Station	Kharkhauda Station-2.0Km,
5	Nearest ICD	ICD Dadri – 80 Km
6	Nearest Airport	<ul style="list-style-type: none"> Hindon Domestic Airport (Ghaziabad) – 55 Km Jewar International Airport – 100 Km
7	One District One Product (ODOP)	Sports Goods
8	Major Industries	<ul style="list-style-type: none"> Sports Goods industry Musical Instruments industry
9	Nearest Industrial Area	<ul style="list-style-type: none"> Sardhana Industrial Area (Approximately 20 km north of Bijauli and Kharkhauda.) Meerut Industrial Area (Situated about 16 km south of Bijauli and Kharkhauda.

10.2 Hapur

Hapur district, located in the western part of Uttar Pradesh, has its administrative headquarters at Hapur town. It shares its boundaries with Meerut and Ghaziabad districts to the north, Bulandshahr to the east, and Gautam Buddha Nagar to the south. The district benefits from strong regional and inter-state connectivity through a network of national highways, including NH-9, NH-24, NH-58, and NH-334.

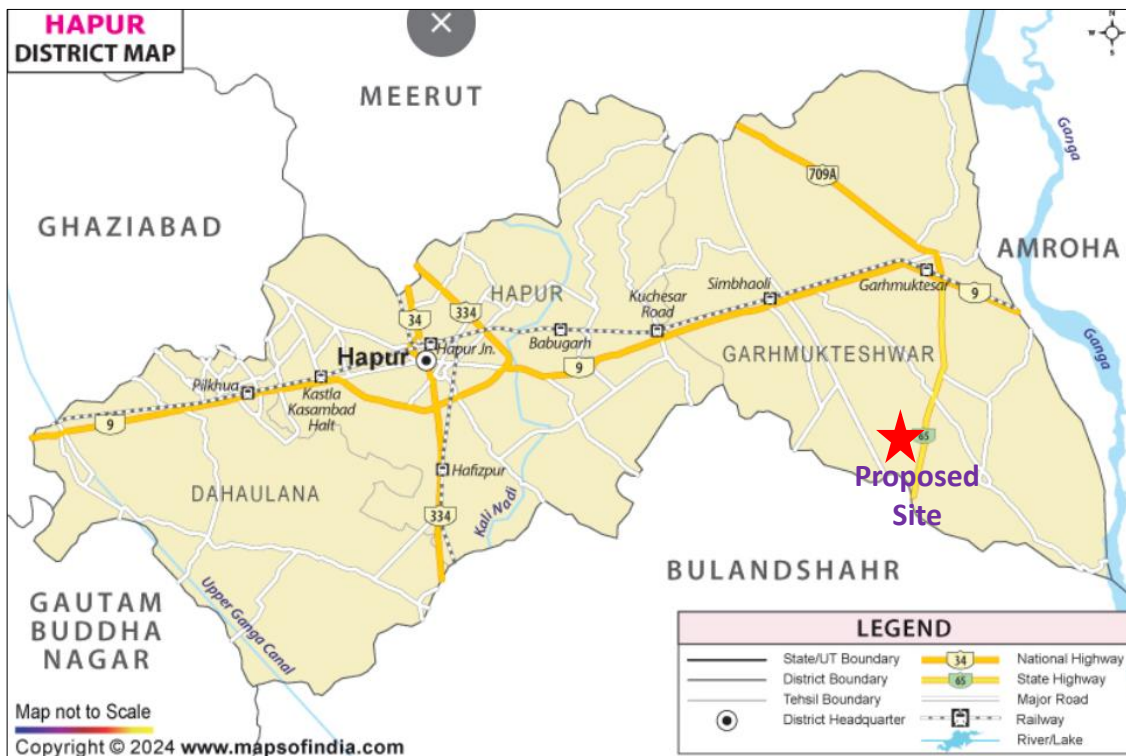


Figure 5: Location Map

The proposed **Integrated Manufacturing and logistic Cluster (IMLC)** is strategically situated in the villages of **Chuchawali, Wahapura, and Bhen Sardarpur** under Tehsil **Garh Mukteshwar** in **Hapur District**. Spanning an extensive area of approximately **304 acre**, the site is positioned near major transport corridors. It is located at **kilometre 54 (54+000) from the starting point of the Ganga Expressway in Meerut, on the left-hand side (LHS)**. The site is flanked by the Ganga Expressway and State Highway 65, which connects directly to National Highway 9 (NH-9), ensuring seamless road connectivity to major cities and industrial hubs across Uttar Pradesh. The location map for the proposed is represented in figure below

EOI for 27 IMLC & 6 DIC



Figure 6: Proposed Site on Google Map

The details of proposed site are provided in the table below-

Sl.No.	Description	
1	Development Type	Greenfield
2	Location	This site is located under Tehsil Garh Mukteshwar in Hapur District along the Ganga Expressway at CH-54+000 in left-hand side of the ganga Expressway and along SH-65
3	Lat/Long	28.690171 / 78.067895
4	Nearest Railway Station	Garhmuktesar Railway Station -12 Km,
5	Nearest ICD	<ul style="list-style-type: none"> ICD Dadri – approx. 50 Km
6	Nearest Airport	<ul style="list-style-type: none"> Jewar International Airport – 80 Km
7	One District One Product (ODOP)	Home Furnishings
8	Major Industries	<ul style="list-style-type: none"> Home furnishing Industries Steel Industries Paper Industries Laminated Products Rice & sugar Mill
9	Nearest Industrial Area	<ul style="list-style-type: none"> Dheerkehera Industrial Area - 40 Km

10.3 Amroha

Amroha district, located in the western part of Uttar Pradesh, has its administrative headquarters at Amroha town. The district shares its boundaries with Moradabad to the north and east, Bijnor to the west, and Sambhal to the south. It is well-connected through major road networks, including NH-24 (Delhi–Lucknow Highway), NH-734, and various state highways, ensuring robust regional and inter-state connectivity.

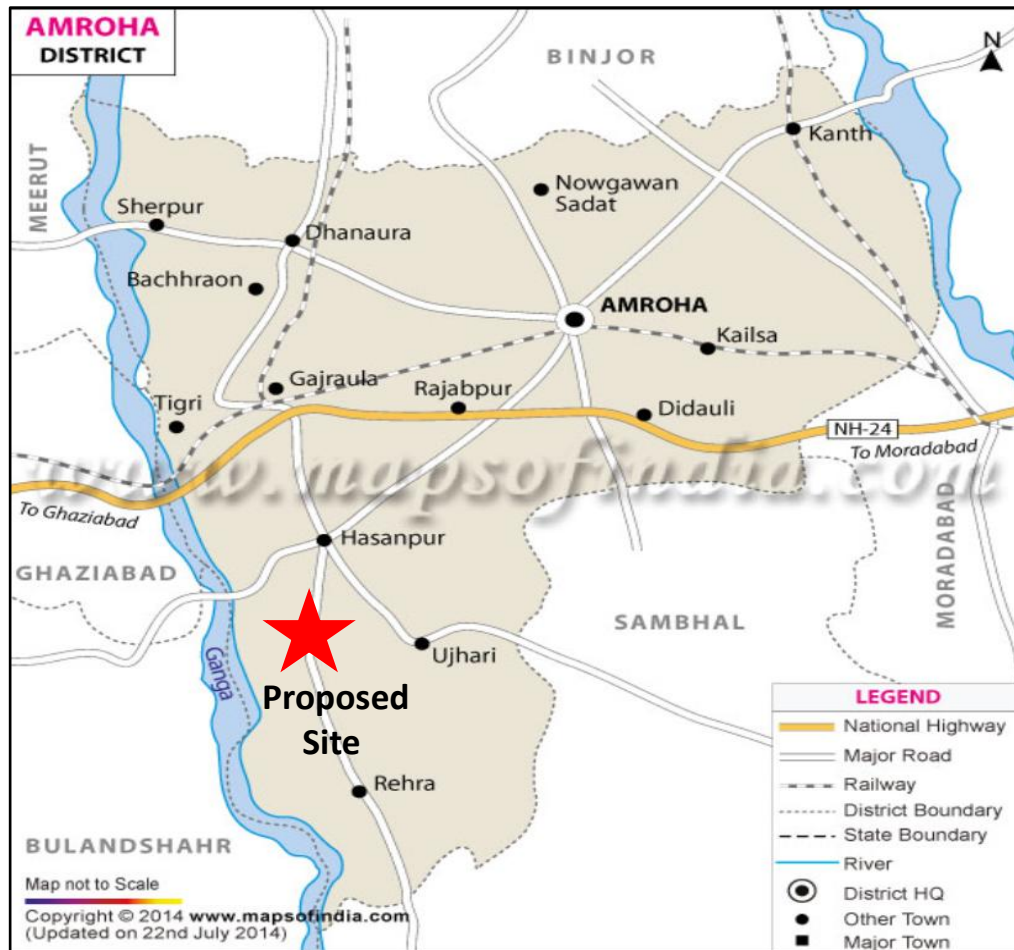


Figure 7: Location Map

The proposed **Integrated Manufacturing and Logistics Cluster (IMLC)** in Amroha district, in the village **Mangraula, Rustumpur Khadar and Daulatpur Kala** under Tehsil **Hasanpur**, spans approximately **348 acre**. It is located along the **Ganga Expressway** at kilometre **74 (74+000)** from the starting point of the expressway in Meerut, on the right-hand side (RHS), providing extensive frontage and facilitating efficient connectivity. The Hodal–Hasanpur Road runs through the central portion of the site and intersects the Ganga Expressway, further enhancing regional access. The location map for the proposed is represented in figure below;

EOI for 27 IMLC & 6 DIC

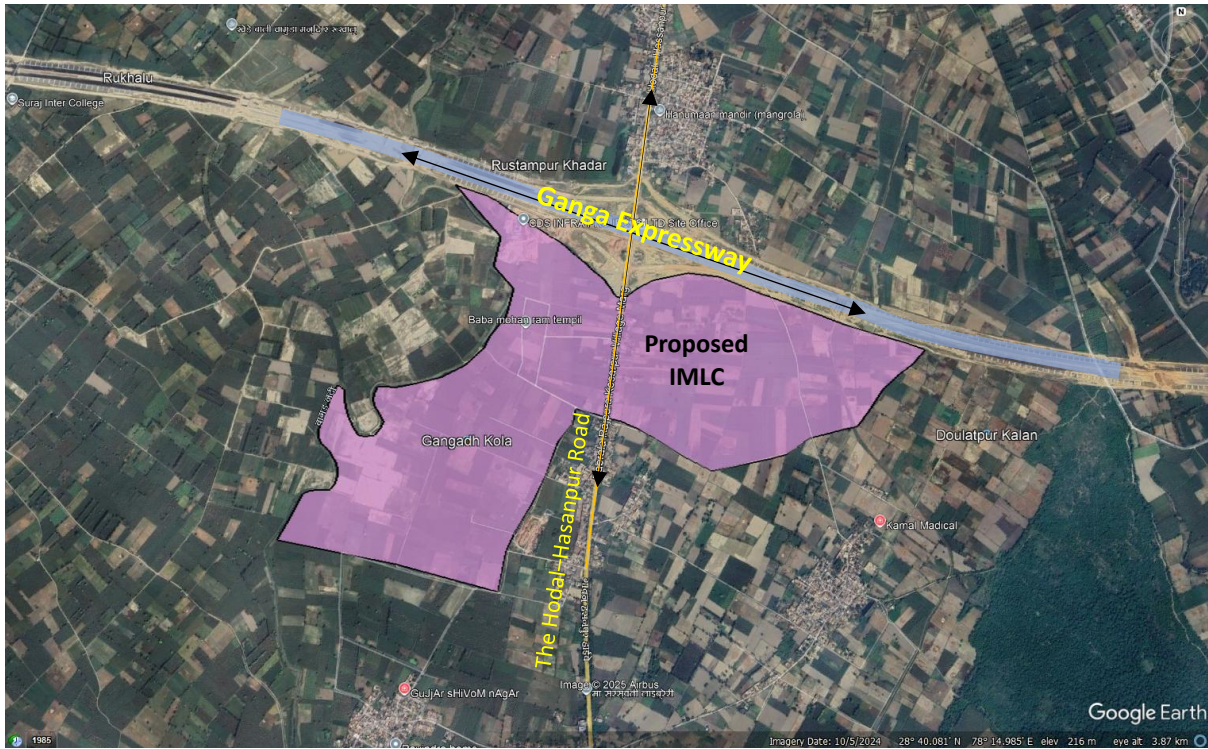


Figure 8: Proposed Site on Google Map

The details of proposed site are provided in the table below-

Sl.No.	Description	
1	Development Type	Greenfield
2	Location	This site is located under Tehsil Hasanpur, Amroha District, along the Ganga Expressway at kilometre (CH-74+000) from the starting point of the expressway in Meerut, on the right-hand side (RHS).
3	Lat/Long	28.657327/ 78.270035
4	Nearest Railway Station	<ul style="list-style-type: none"> Gajraula Junction (GJL): Approximately 12 Km Amroha Railway Station (AMRO): Approximately 32 km
5	Nearest ICD	<ul style="list-style-type: none"> ICD Moradabad – approx. 60 km
6	Nearest Airport	Indira Gandhi International Airport (DEL): approximately 116 km
7	One District One Product (ODOP)	Musical Instrument (Dholak)
8	Major Industries	<ul style="list-style-type: none"> Industries of Musical Instruments Cotton and Textile Industries Organic Industries
9	Nearest Industrial Area	<ul style="list-style-type: none"> Gajraula Industrial Area

10.4 Sambhal

Sambhal, located in the western part of Uttar Pradesh, has its administrative headquarters at Sambhal town. The district shares its boundaries with Moradabad to the north, Badaun to the east, Aligarh to the south, and Amroha to the west. Well-connected through national highways such as NH-9 and NH-93, the district enjoys efficient regional and inter-state connectivity.



Figure 9: Location Map

The proposed **Integrated Manufacturing and Logistics Cluster (IMLC)** in **Sambhal** district is located in the village **Khirni Mohuidinpur, Basla, Sarangpur and Amawati Kutubpur** under Tehsil **Sadar** and covers an area of approximately **591 acre**. The site is situated at **kilometre 100 (100+000) on the right-hand side (RHS) of the Ganga Expressway**, measured from its starting point in Meerut. Additionally, the Sambhal–Anupshahr Road passes close to the proposed site, further enhancing its connectivity. The location map for the proposed is represented in figure below;

EOI for 27 IMLC & 6 DIC

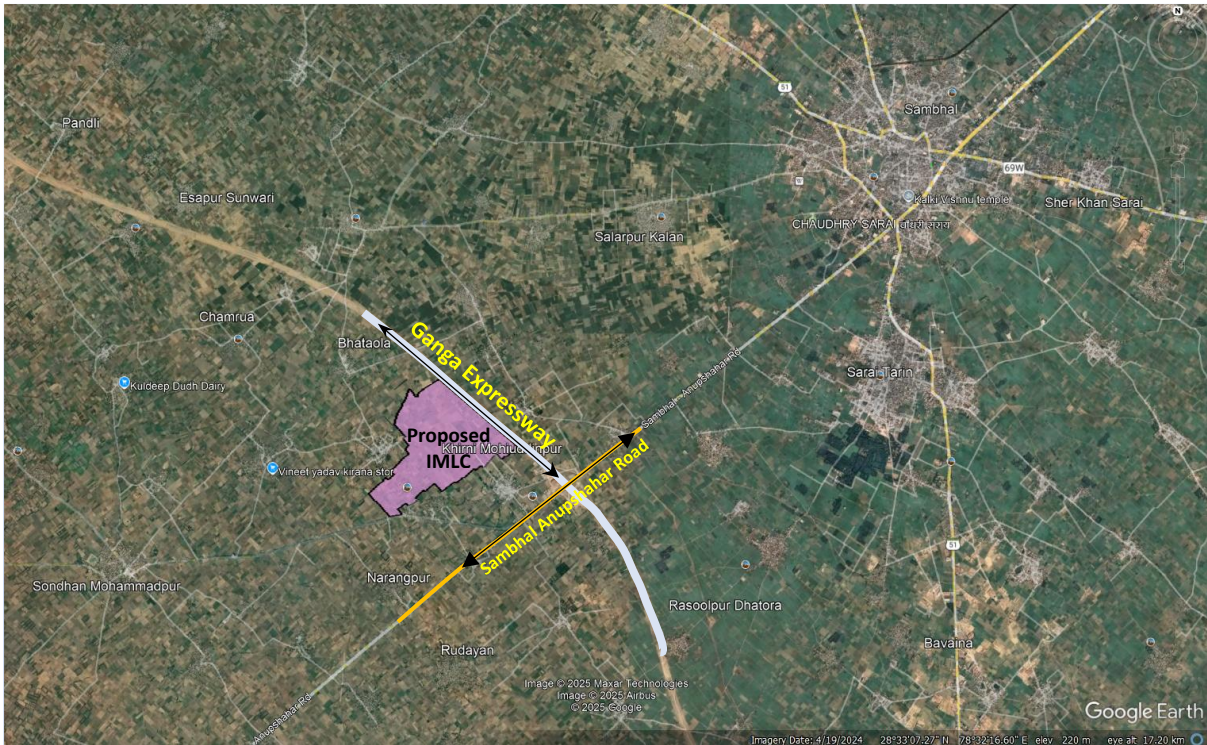


Figure 9: Proposed Site on Google Map

The details of proposed site are provided in the table below-

Sl.No.	Description	
1	Development Type	Greenfield
2	Location	This site is located in the under Sadar in Sambhal District along the Ganga Expressway at change CH-100+000 on the right-hand side (RHS) of the Ganga Expressway.
3	Lat/Long	28.540769/ 78.491098
4	Nearest Railway Station	Sambhal Hatim Sarai railway station – 10 Km,
5	Nearest ICD	ICD Moradabad – approx. 40 Km
6	Nearest Airport	<ul style="list-style-type: none"> Moradabad Airport – approx. 40 Km
7	One District One Product (ODOP)	Metal Craft
8	Major Industries	<ul style="list-style-type: none"> Distilleries Sugar Mill Dairy Products
9	Nearest Industrial Area	<ul style="list-style-type: none"> Moradabad Special Economic Zone (SEZ), located approximately 40–45 Km

10.5 Badaun

Badaun district, located in the western part of Uttar Pradesh, has its administrative headquarters at Badaun town. The district shares its boundaries with Bareilly to the north, Shahjahanpur to the east, Farrukhabad to the southeast, Kasganj to the southwest, and Sambhal to the west. Badaun is well-connected through a network of major roads, including National Highway 21 (NH-21), NH-731, and various state highways, which ensure efficient regional and inter-state connectivity.

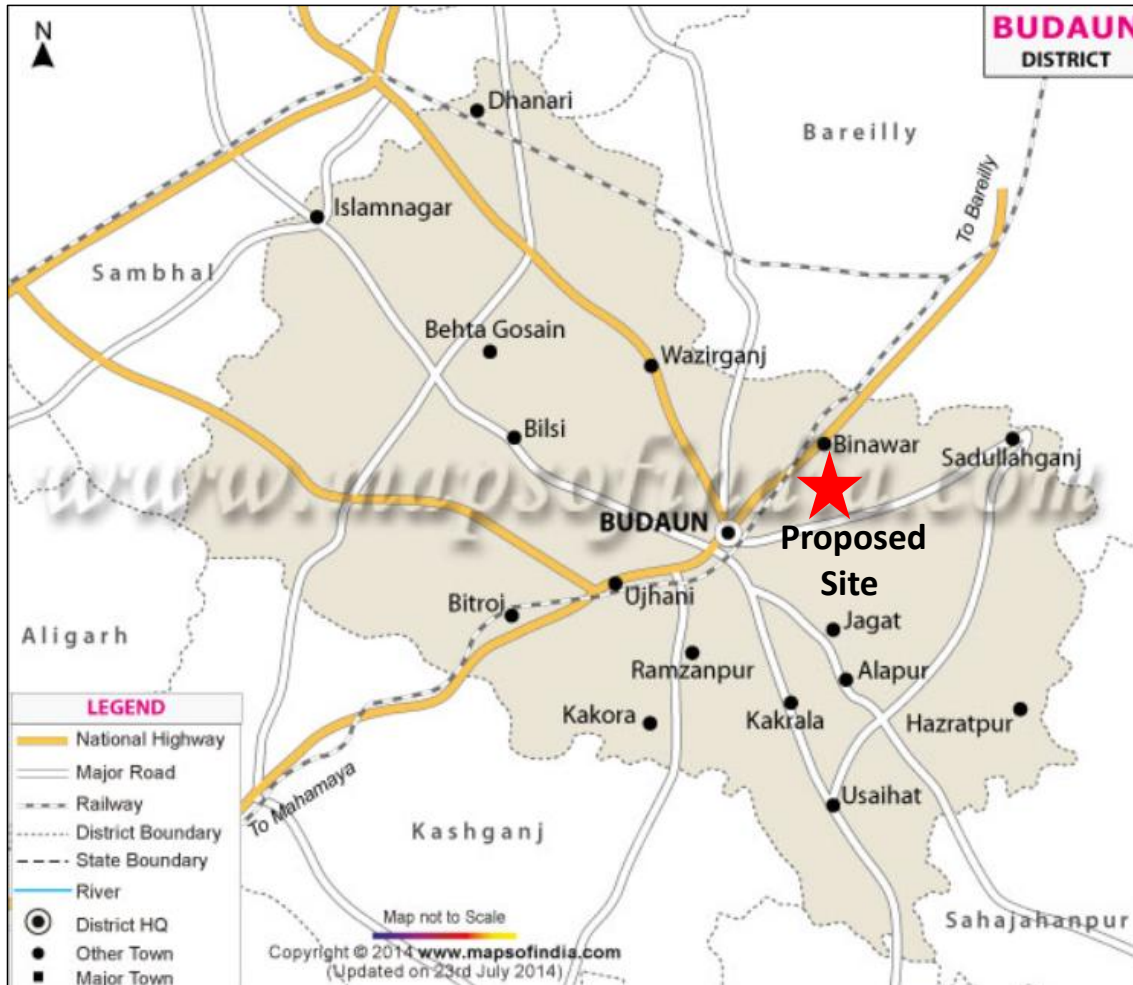


Figure 10: Location Map

The proposed site for the **Integrated Manufacturing and Logistics Cluster (IMLC)** is located in **Badaun** district in the village **Aurangabad Mafi, Ghatpuri and Kutubpur Thara** under **Tehsil Sadar**, covering an area of approximately **269 acre**. The site has direct frontage on National Highway 21 (NH-21), providing excellent road connectivity. It is situated just 1.0 km from the Ganga Expressway at **kilometre 189 (189+000) from the start point on the right-hand side (RHS) of the expressway**. The location map for the proposed is represented in figure below;

EOI for 27 IMLC & 6 DIC

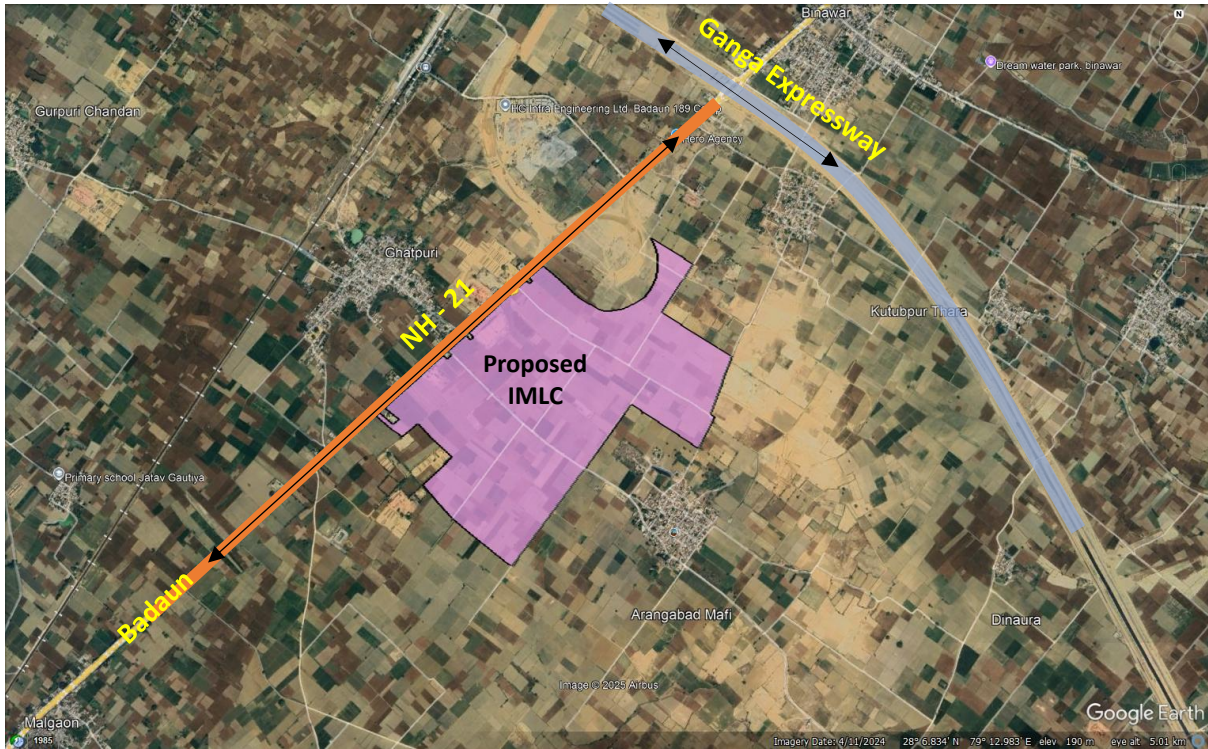


Figure 11: Proposed Site on Google Map

The details of proposed site are provided in the table below-

Sl.No.	Description	
1	Development Type	Greenfield
2	Location	The proposed IMLC site in Sadar Tehsil, Badaun district is located with direct frontage on NH-21 and lies just 1 km from the Ganga Expressway at chainage CH-189+000 RHS.
3	Lat/Long	28.113994/ 79.213703
4	Nearest Railway Station	<ul style="list-style-type: none"> Ghatpuri Railway Station (GTP): Approximately 1.7 Budaun Railway Station (BEM) (AMRO): Approximately 13 km
5	Nearest ICD	<ul style="list-style-type: none"> ICD Moradabad – approx. 160 km
6	Nearest Airport	Bareilly Airport: approximately 45 km
7	One District One Product (ODOP)	Zari-Zardozi
8	Major Industries	<ul style="list-style-type: none"> Sugar Mill Food Industry Chemical Based Industry
9	Nearest Industrial Area	<ul style="list-style-type: none"> Gajraula Industrial Area

10.6 Shahjahanpur

Shahjahanpur, a district in the northern part of Uttar Pradesh, has its headquarters at Shahjahanpur town. It is bordered by Bareilly district to the west, Pilibhit district to the north, Kheri district to the east, and Hardoi district to the south. The district is also adjacent to the state boundary of Uttarakhand to the northwest. Key national highways, including NH-24, pass through the district, facilitating its connectivity with neighbouring regions.

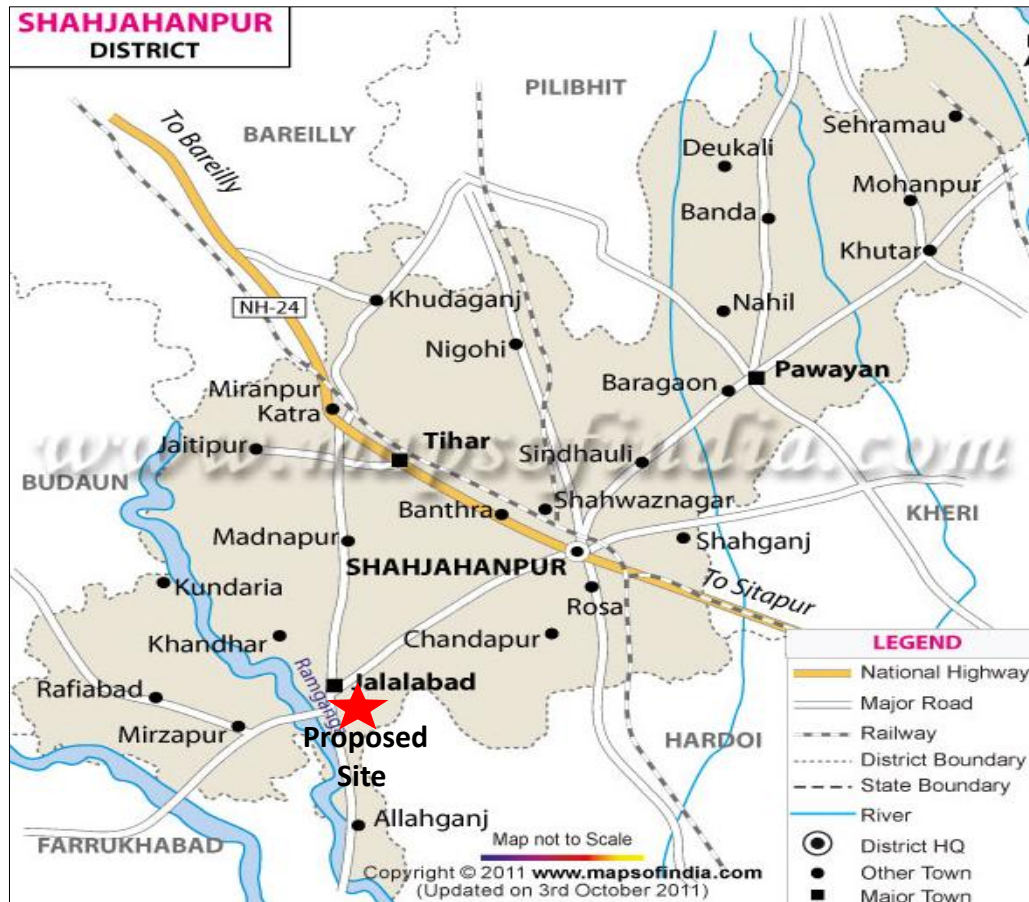
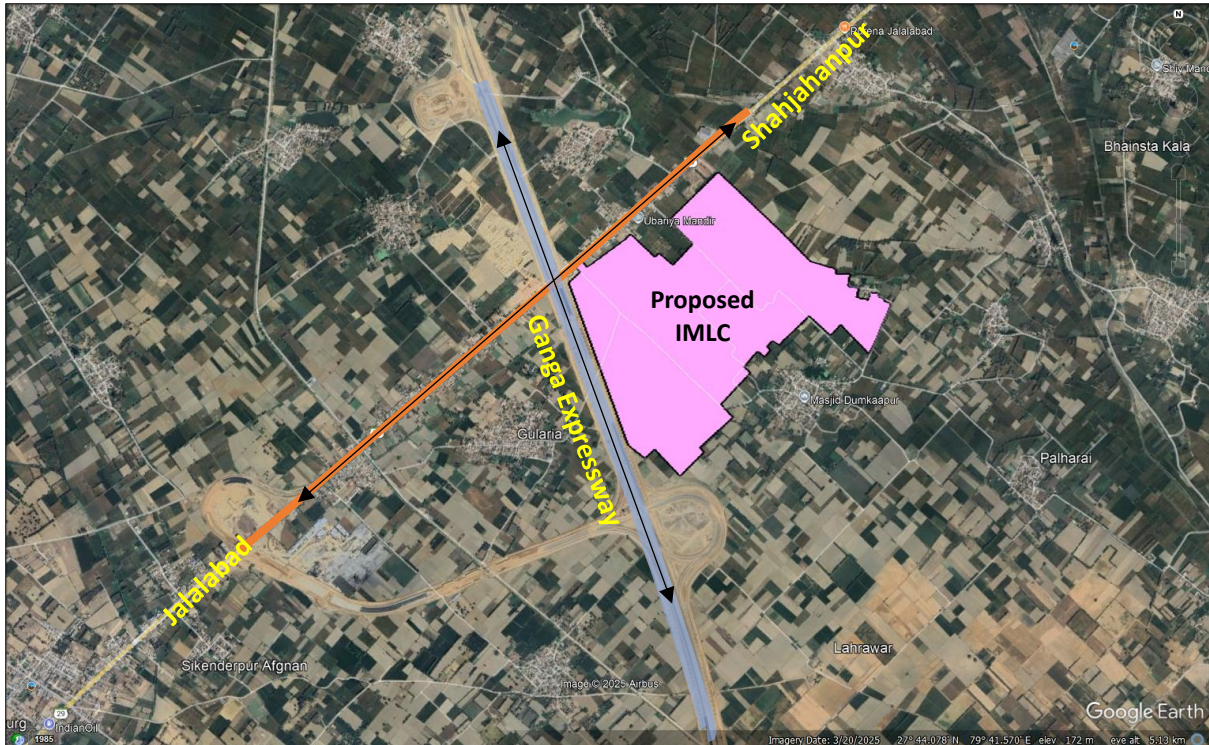


Figure 12: Location Map

The **proposed site for the Integrated Manufacturing and Logistics Cluster (IMLC)** is located in **Shahjahanpur** district, in the village **Guldiya** under Tehsil **Jalalabad**, covering an area of approximately **252 acre**. This site, which includes the **villages of Guldiya**, is positioned at the **intersection of the Ganga Expressway and State Highway-29**, at **kilometer 255.500 (255+500)** on the **left-hand side of the expressway in the southeast corner**. Its prime location along the **eastern side of the Ganga Expressway and the southern side of State Highway-29**. The site's accessibility and proximity to key transportation routes make it an ideal location for a multi-modal logistics center. The location map for the proposed is represented in figure below;

EOI for 27 IMLC & 6 DIC



The details of proposed site are provided in the table below-

Sl.No.	Description	
1	Development Type	Greenfield
2	Location	This site is positioned at the intersection of the Ganga Expressway and State Highway-29, in the southeast corner and at kilometre (CH-255+500) on the left-hand side of the Expressway.
3	Lat/Long	27.736214 / 79.696190
4	Nearest Railway Station	<ul style="list-style-type: none"> Shahjahanpur Junction (SPN): Approximately 35 Km
5	Nearest ICD	<ul style="list-style-type: none"> ICD Moradabad – approx. 160 km
6	Nearest Airport	Bareilly: approximately 90 km
7	One District One Product (ODOP)	Zari-Zardozi
8	Major Industries	<ul style="list-style-type: none"> Clothing factory Paper Mill Cement industry Sugar Mill Agro Energy industry Surgical and Medical Equipment industry
9	Nearest Industrial Area	<ul style="list-style-type: none"> Growth Centre Shahjahanpur

10.7 Hardoi

Hardoi district, located in the northern part of Uttar Pradesh, has its administrative headquarters at Hardoi town. The district shares its boundaries with Shahjahanpur to the north, Unnao to the south, Lucknow to the southeast, and Farrukhabad to the west. The district benefits from strong road connectivity, including major national highways such as NH-24, NH-730, and NH-730C, which ensure smooth regional and inter-state travel.

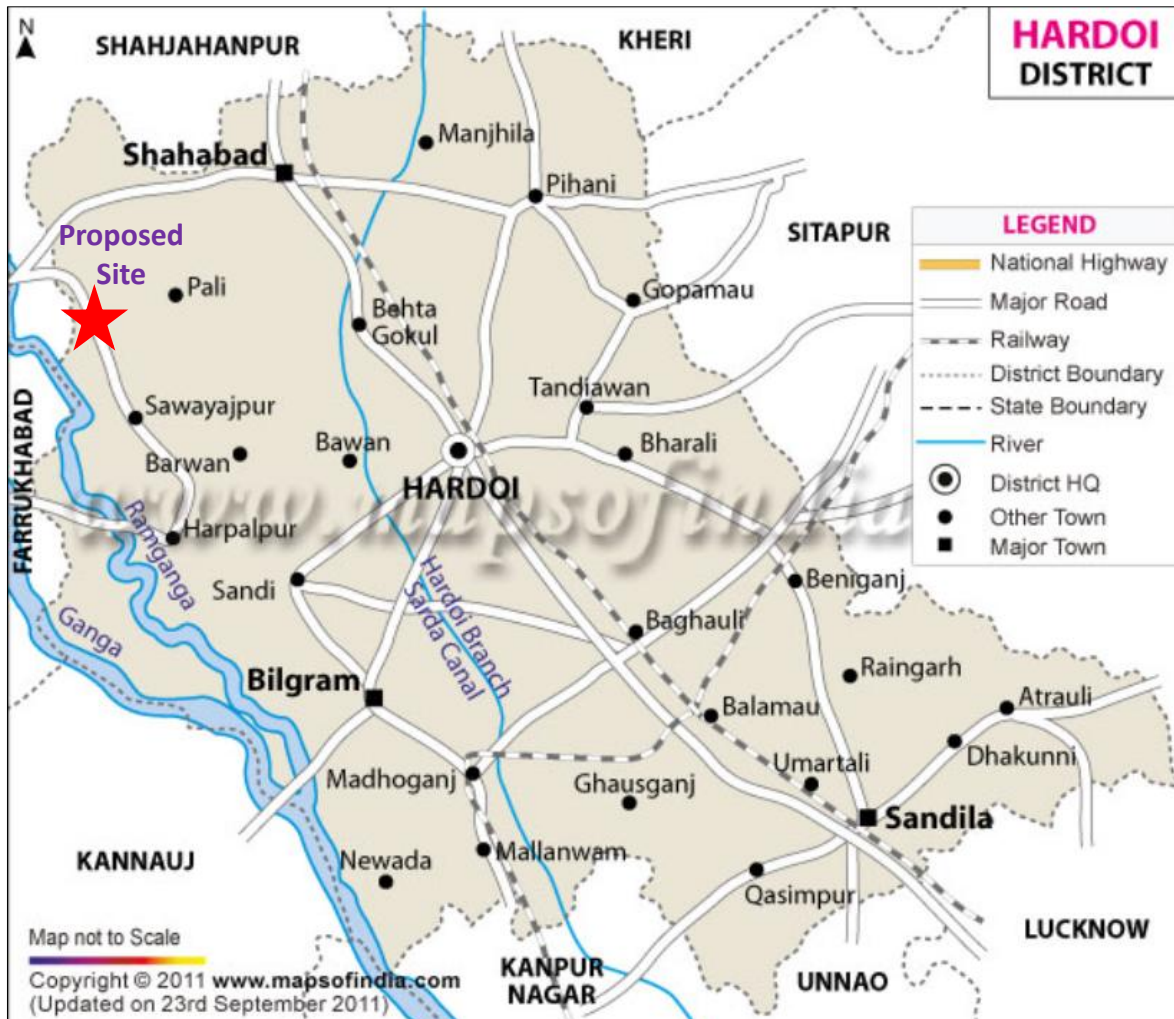


Figure 13: Location Map

The proposed **Integrated Manufacturing and Logistics Cluster (IMLC)** in Hardoi district spans **335 acre** across in the villages of **Kaushiya, Sarsai, Deoniyapur Sarsaipur, and Semarjhala**. Strategically located along **MDR 26C (Baddupur–Mohabbatpur Road)**, which site connects to **NH-730C** and lies just 300 meters west of the Ganga Expressway, ensuring strong regional connectivity and lies at the **Kilometer 282 (282+000) on the right hand side of the expressway**. The location map for the proposed is represented in figure below;



Figure 14: Proposed Site on Google Map

The details of proposed site are provided in the table below-

Sl.No.	Description	
1	Development Type	Greenfield
2	Location	This site is located under Tehsil Sawayajpur in Hardoi District, along MDR 26C and 300m from the Ganga Expressway at Kilometer 282 (CH-282+000) on the right-hand side of the expressway.
3	Lat/Long	27.506319/ 79.746282
4	Nearest Railway Station	Hardoi Railway Station, approximately 25 Km
5	Nearest ICD	<ul style="list-style-type: none"> ICD Kanpur – approx. 150 Km
6	Nearest Airport	Lucknow Airport: 150 Km
7	One District One Product (ODOP)	Handloom
8	Major Industries	<ul style="list-style-type: none"> Handloom Industries Flour and Sugar Mill
9	Nearest Industrial Area	<ul style="list-style-type: none"> Growth Centre Shahjahanpur located approximately 40–45 Km

10.8 Unnao

Unnao, strategically located in central Uttar Pradesh, has its administrative headquarters at Unnao town. The district shares its boundaries with Lucknow to the east, Kanpur Nagar to the west, Hardoi to the north, and Raebareli to the south. Unnao is well-connected through major national highways such as NH-27 and NH-731, facilitating efficient regional and inter-state connectivity. The district's proximity to two major urban centers—Lucknow and Kanpur—makes it a significant industrial and logistical hub in the region.

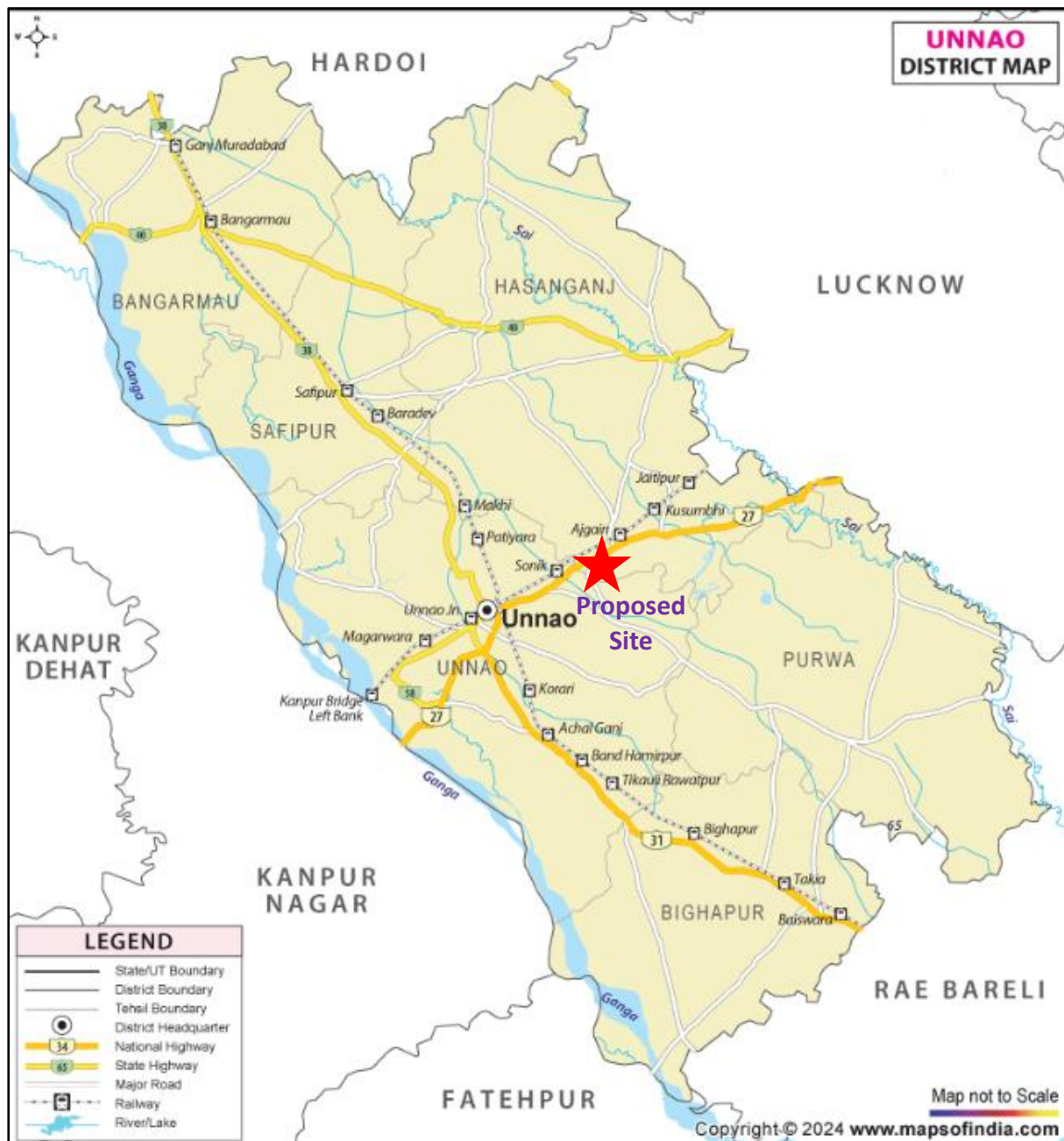


Figure 15: Location Map

EOI for 27 IMLC & 6 DIC

The proposed Integrated Manufacturing and Logistics Cluster (IMLC) in **Unnao** district spans **333 acre** across the villages of **Sarai Katiyan** and **Murtaja Nagar** under Tehsil **Sadar**. The site is located along the **left-hand side of the Ganga Expressway at Kilometer 422 (chainage 422+000)**. The location map for the proposed is represented in figure below;



Figure 16: Proposed IMLC Location on Google Map

The details of proposed site are provided in the table below-

Sl.No.	Description	
1	Development Type	Greenfield
2	Location	This site is located under Tehsil Sadar in Unnao District, along Ganga Expressway at Kilometer 422 (CH-282+000) on the Left -hand side of the expressway.
3	Lat/Long	26.570513/ 80.584857
4	Nearest Railway Station	Sonik Railway Station, approximately 5 Km
5	Nearest ICD	• ICD Kanpur – approx. 150 Km
6	Nearest Airport	Lucknow & Kanpur Airport: 40 Km
7	One District One Product (ODOP)	Zari-Zardozi
8	Major Industries	Zari-Zardozi handicraft Industry Leather Industry Textile & Hosiery based Industry
9	Nearest Industrial Area	• Kanpur 40–45 Km

10.9 Raebareli

Raebareli, centrally located in Uttar Pradesh, has its administrative headquarters at Raebareli town. The district shares its boundaries with Amethi to the east, Lucknow and Unnao to the north, Fatehpur to the west, and Pratapgarh to the south. The district is well-connected through a network of national highways, including NH-30 and NH-24, enabling smooth regional and inter-state connectivity.

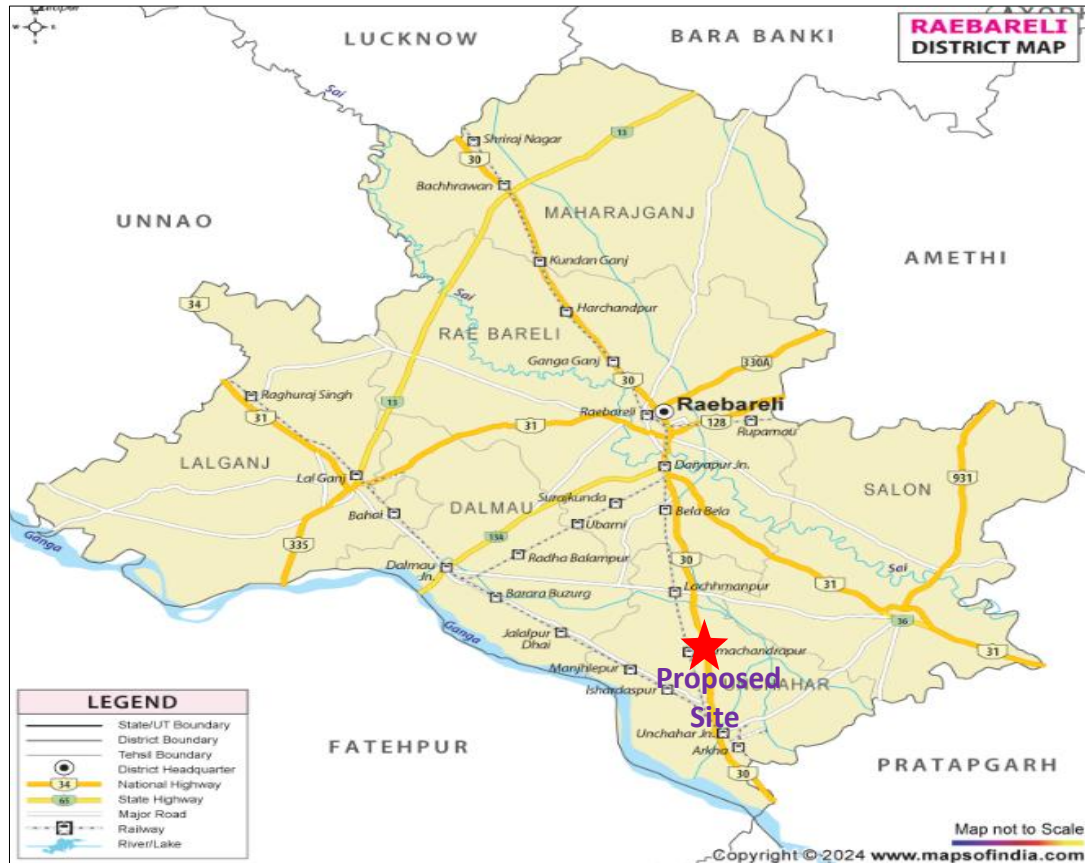


Figure 17: Location Map

The **proposed Integrated Manufacturing and Logistics Cluster (IMLC)** is planned in Raebareli district in the village **Itaura Buzurg** under Tehsil **Uchahar**, approximately **20 Km from the Raebareli district headquarters**. Spanning an area of approximately **233 acre**, the identified site is located to the **west of National Highway-30**, adjacent to the **Toll Plaza near Itora Buzurg** and lies at **NH-30 Kilometer (517)**. The location offers strategic logistical advantages due to its multimodal connectivity. The location map for the proposed is represented in figure below;

EOI for 27 IMLC & 6 DIC

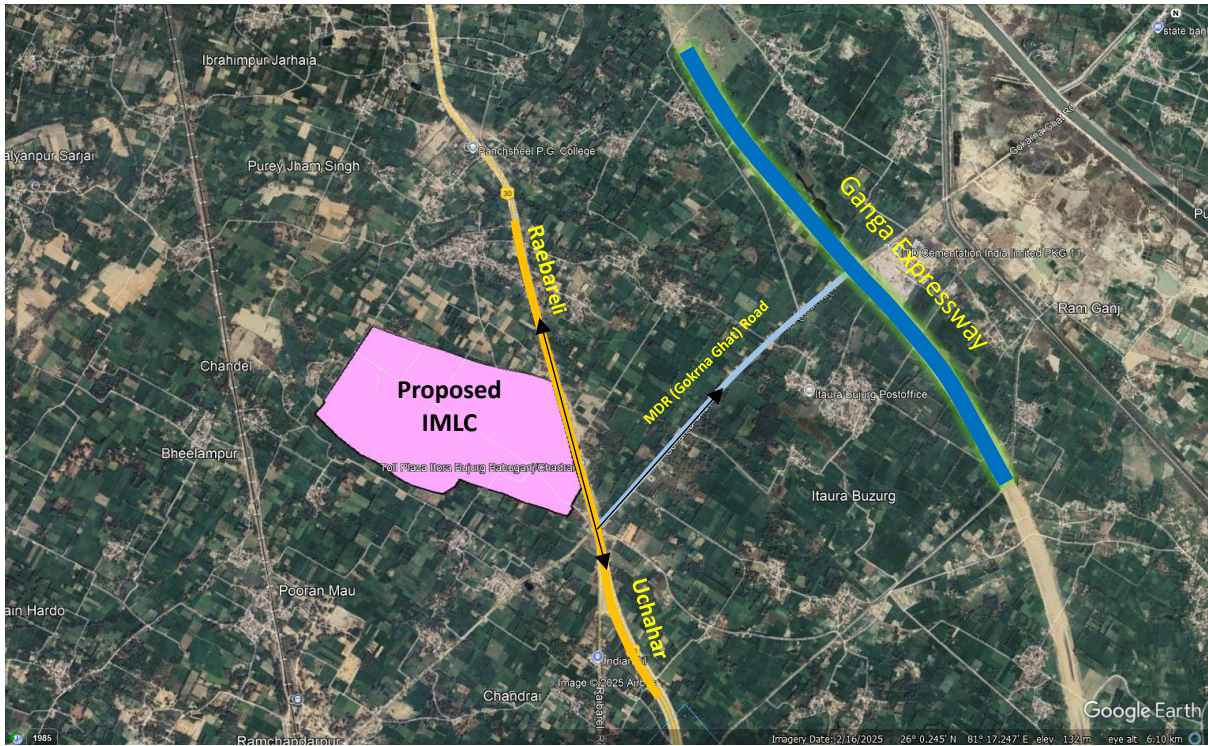


Figure 18: Proposed Site on Google Map

The details of proposed site are provided in the table below-

Sl.No.	Particulars	Details
1	Development Type	Greenfield
2	Location	The site is located in Raebareli district, Tehsil Uchahar, to the west of NH-30 near Itora Buzurg Toll Plaza, 2 km from Ganga Expressway.
3	Lat/Long	26.00158/ 81.279063
4	Nearest Railway Station	<ul style="list-style-type: none"> • Raebareli Junction (RBL): Approx. 20 Km • Uchahar Railway Station: Approx. 5 km
5	Nearest ICD	<ul style="list-style-type: none"> • ICD Kanpur – approx. 130 km
6	Nearest Airport	Chaudhary Charan Singh International Airport (LKO) Lucknow: approximately 120 km
7	One District One Product (ODOP)	Wood Work
8	Major Industries	<ul style="list-style-type: none"> • Wood based Industry • Electronic Industry • Telephone Industry • Paper based Industry • Sugar Mill • Cement Industry • Engineering unit
9	Nearest Industrial Area	<ul style="list-style-type: none"> • Dalmau Industrial Area • Lalganj Industrial Area • Raebareli Industrial Cluster

10.10 Pratapgarh

Pratapgarh district, located in the **southeastern part of Uttar Pradesh**, has its administrative headquarters at Pratapgarh town. It shares its boundaries with Sultanpur and Ayodhya districts to the east, Prayagraj to the south and west, and Raebareli and Amethi to the north. The district benefits from robust regional and inter-state connectivity through a network of national highways, including NH-330, NH-931, NH-31, and NH-731.

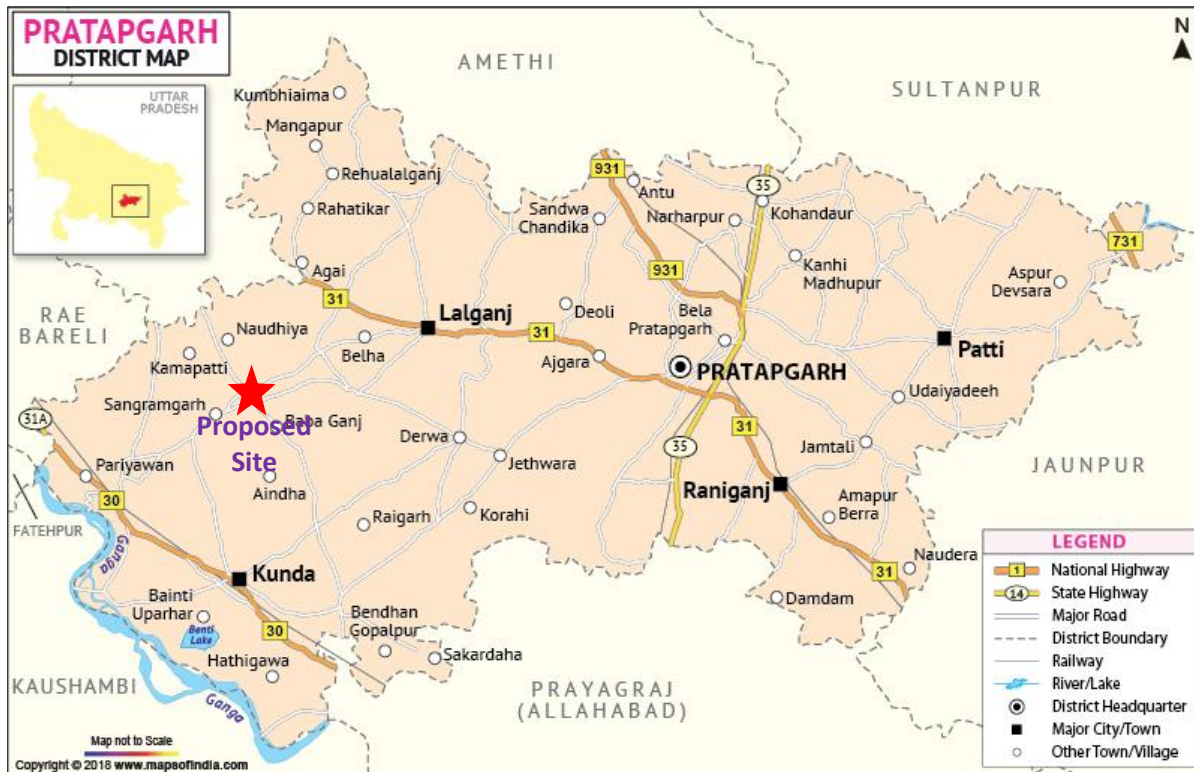


Figure 19: Location Map

The proposed **Integrated Manufacturing and Logistics Cluster (IMLC)** is located in the village **Pratap Chergarh** under **Kunda Tehsil**, approximately 40 km from the district headquarters. Spanning an area of about **263 acre**, the site is situated at **kilometre 555 (555+000) on the right-hand side of the Ganga Expressway**, near the southwest corner of the intersection between the expressway and a major district road that connects NH-30 (near Manikpur) to NH-31 (near Lalganj Ajhara). The location map for the proposed is represented in figure below;

EOI for 27 IMLC & 6 DIC



The details of proposed site are provided in the table below-

Sl.No.	Particulars	Details
1	Development Type	Greenfield
2	Location	This site is situated at kilometre 555 (CH-555+000) on the right-hand side of the Ganga Expressway, near the southwest corner of the intersection between the expressway and a major district road that connects NH-30 (near Manikpur) to NH-31 (near Lalganj Ajhara).
3	Lat/Long	25.878312/ 81.562755
4	Nearest Railway Station	<ul style="list-style-type: none"> Kunda Harnamganj: Approx. 25 Km
5	Nearest ICD	<ul style="list-style-type: none"> ICD Madhosingh (Mirzapur) – approx. 160 km
6	Nearest Airport	Prayagraj Airport (Bamrauli Airport): approx. 80 km
7	One District One Product (ODOP)	Food Processing (Aamla)
8	Major Industries	<ul style="list-style-type: none"> Food Processing Agro Industry
9	Nearest Industrial Area	<ul style="list-style-type: none"> Naini Industrial Area, Prayagraj Jagdishpur Industrial Area, Amethi Raebareli Industrial Area

10.11 Prayagraj

Prayagraj district, located in the southern part of Uttar Pradesh, has its administrative headquarters at **Prayagraj city (formerly Allahabad)**, a major urban and economic center of the state. It shares boundaries with Pratapgarh and Jaunpur to the north, Bhadohi and Mirzapur to the east, and Kaushambi and Fatehpur to the west. The district boasts excellent connectivity through a network of national and state highways, including **NH-19, NH-35, NH-30, and NH-330**, supporting efficient trade and transportation.



Figure 20: Location Map

The proposed **Integrated Manufacturing and Logistics Cluster (IMLC)** is strategically situated in the village **Madhavpur Malaq Cheturi, Judapur Dadu, Bari and Sarai Lalkhatun (Shivgarh)** under **Soraon Tehsil** across the villages of **Madhopur Mlaq, Judapur Dandu, Bari, and Lakhaniapur**, adjacent to the southern side of NH-19 and near the **Judapur Dandu interchange**.

EOI for 27 IMLC & 6 DIC

Spanning approximately **251 acre**, the site lies close to the **NH-19 and NH-330** junction and is positioned at the **terminal point of the under-construction Ganga Expressway at kilometer 601 (601+000)**, making it a prime logistics hub just 20 km from the Prayagraj city center. The location map for the proposed is represented in figure below;

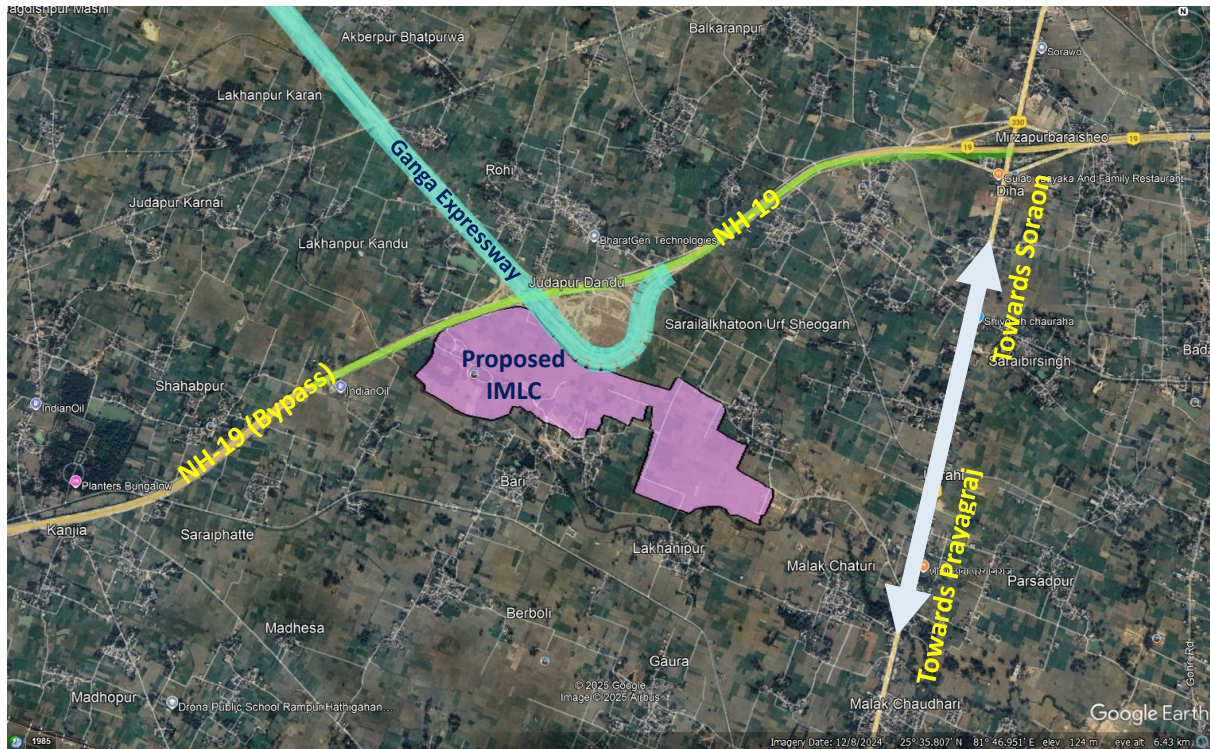


Figure 21: Proposed Site on google Map
The details of proposed site are provided in the table below-

Sl.No.	Particulars	Details
1	Development Type	Greenfield
2	Location	The site is located in Soraon Tehsil of Prayagraj district, across villages Madhopur Mlaq, Judapur Dandu, Bari, and Lakhanipur, adjacent to NH-19 near the Judapur Dandu interchange and at the terminal point of the under-construction Ganga Expressway.
3	Lat/Long	25.576571/ 81.815385
4	Nearest Railway Station	<ul style="list-style-type: none"> Phaphamau Junction: Approx. 10 Km
5	Nearest ICD	<ul style="list-style-type: none"> ICD Madhosingh (Mirzapur) – approx. 100 km
6	Nearest Airport	Prayagraj Airport (Bamrauli Airport): approx. 30 km
7	One District One Product (ODOP)	Moonj Products
8	Major Industries	<ul style="list-style-type: none"> Moonj Industries Gas Cylinders and compressors
9	Nearest Industrial Area	<ul style="list-style-type: none"> Naini Industrial Area, Prayagraj

11 Proposed IMLCs along Agra – Lucknow Expressway

The **Agra-Lucknow Expressway** is emerging as a key driver of industrial growth in Uttar Pradesh, with the **Uttar Pradesh Expressways Industrial Development Authority (UPEIDA)** planning the development of **Integrated Manufacturing and Logistics Clusters (IMLCs)** at **Firozabad, Etawah, and Kannauj**. These clusters aim to cater to the regional demand for industrial expansion by tapping into local strengths such as Firozabad’s glass industry, Kannauj’s agro-based economy, and Etawah’s strategic location. The initiative focuses on promoting manufacturing, logistics, and warehousing through well-connected, infrastructure-ready industrial zones.

To facilitate this vision, UPEIDA will soon launch the allotment of industrial, logistics, and warehousing plots in these IMLCs. These sites are strategically positioned along the expressway to ensure seamless connectivity and reduced logistics costs, making them ideal for investors and businesses. The development of these clusters is expected to boost employment, attract private investment, and contribute significantly to the economic growth of the region by creating a modern, integrated industrial corridor.

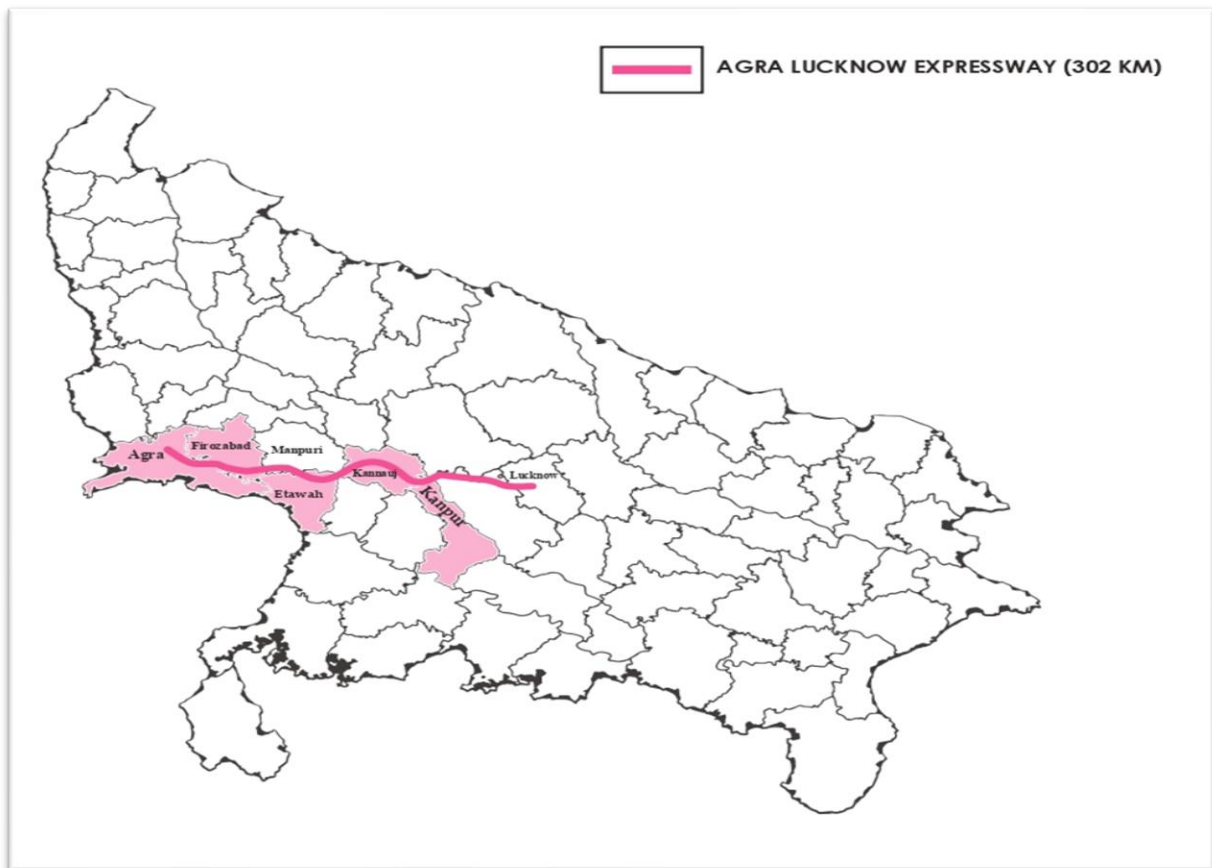


Figure 22: Proposed IMLC along Agra - Lucknow

11.1 Firozabad

Firozabad, situated in **western Uttar Pradesh**, is strategically positioned for developing an Integrated Manufacturing and Logistics Cluster (IMLC) due to its strong multimodal connectivity. It lies on National Highway 19 (NH-2), linking it to major cities like Delhi and Agra, and is served by the Delhi-Howrah main railway line, facilitating efficient road and rail transport. The closest airport is Kheria Airport in Agra, about 70 km away. This combination of road, rail, and air connectivity supports the growth of industries such as glassware, engineering goods, and logistics in Firozabad.

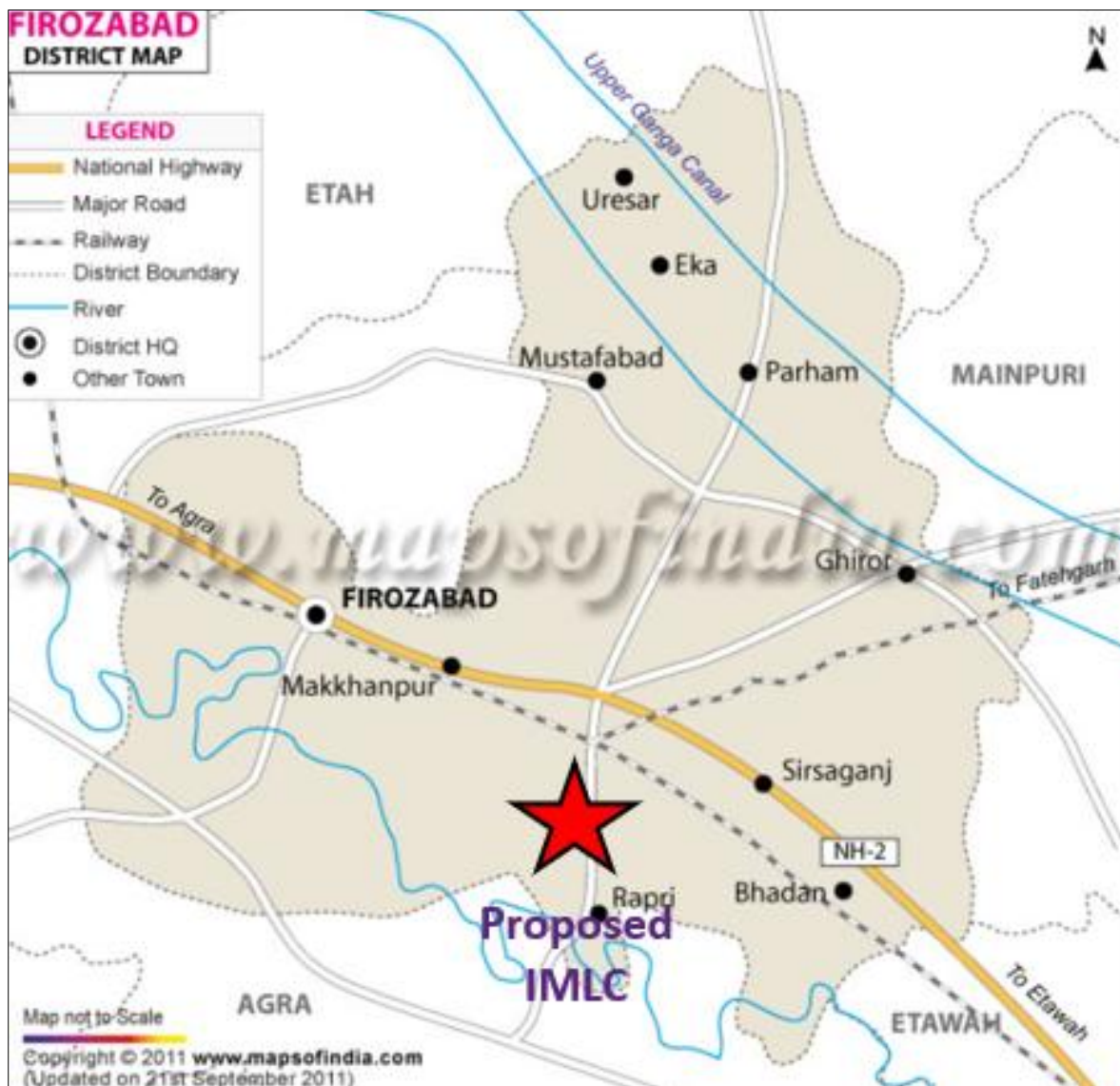


Figure 23: Location Map

The proposed IMLC in **Firozabad** covers an area of **344 acre** and is located approximately 30 km from Firozabad city, in the village **Nasirpur** under tahsil **Shikohabad** and in the village **Gospur, Salempur Chak and Ababakpur** under tahsil **Sirsaganj** in the southeast corner at **Kilometre 53 (53+000)** from start point of expressway the expressway in Agra on the Right-hand side (RHS) of the Agra-Lucknow

EOI for 27 IMLC & 6 DIC

Expressway. The site has direct frontage along the expressway's service road and is situated about 500 meters west of MDR-77W, ensuring excellent connectivity.



Figure 24: Proposed Site on Google Map

The details of proposed site are provided in the table below -

Sl.No.	Particulars	Details
1	Development Type	Greenfield
2	Location	The proposed site is located approximately 30 km from Firozabad city, under Tehsil Sirsaganj, in the southeast corner at Chainage 53+000 on the right-hand side (RHS) of the Agra-Lucknow Expressway.
3	Lat/Long	26.990961/78.573591
4	Nearest Railway Station	<ul style="list-style-type: none"> Kaurara : Approx. 12 Km
5	Nearest ICD	<ul style="list-style-type: none"> ICD agra – approx. 74 km
6	Nearest Airport	Agra Airport: approx. 70 km
7	One District One Product (ODOP)	Leather Products and Marble inlay work
8	Major Industries	<ul style="list-style-type: none"> Leather Products and Shoes Electrical Goods Pipes Packing Material Rubber & Plastic
9	Nearest Industrial Area	<ul style="list-style-type: none"> Agra

11.2 Etawah

Etawah in western Uttar Pradesh is well-suited for an **Integrated Manufacturing and Logistics Cluster (IMLC)** due to its strong multimodal connectivity. It lies on National Highway 19, linking key cities like Agra and Kanpur, and is on the major Delhi-Kolkata railway line. Its location near the Yamuna and Chambal rivers adds geographical advantage. The nearest airport is Agra’s Kheria Airport, about 150 km away. This connectivity supports growth in manufacturing, agriculture processing, and logistics, making Etawah a strategic regional hub for trade and industry.



Figure 25: Location Map

EOI for 27 IMLC & 6 DIC

The proposed IMLC in **Etawah** spans **217 acre** and is situated about **30 km east of Etawah city** in the village **Dhakupura** under tahsil **Bharathana** and village **Kakrahi** under tahsil **Takha**, at the **north-western corner of the Bundelkhand Expressway** and **NH-234** at **kilometre 132 (132+000)** from the start point in **Agra** on the **right-hand side of the expressway**. The site features direct frontage along the Bundelkhand Expressway's service road, with NH-234 on the other side. Additionally, it is located

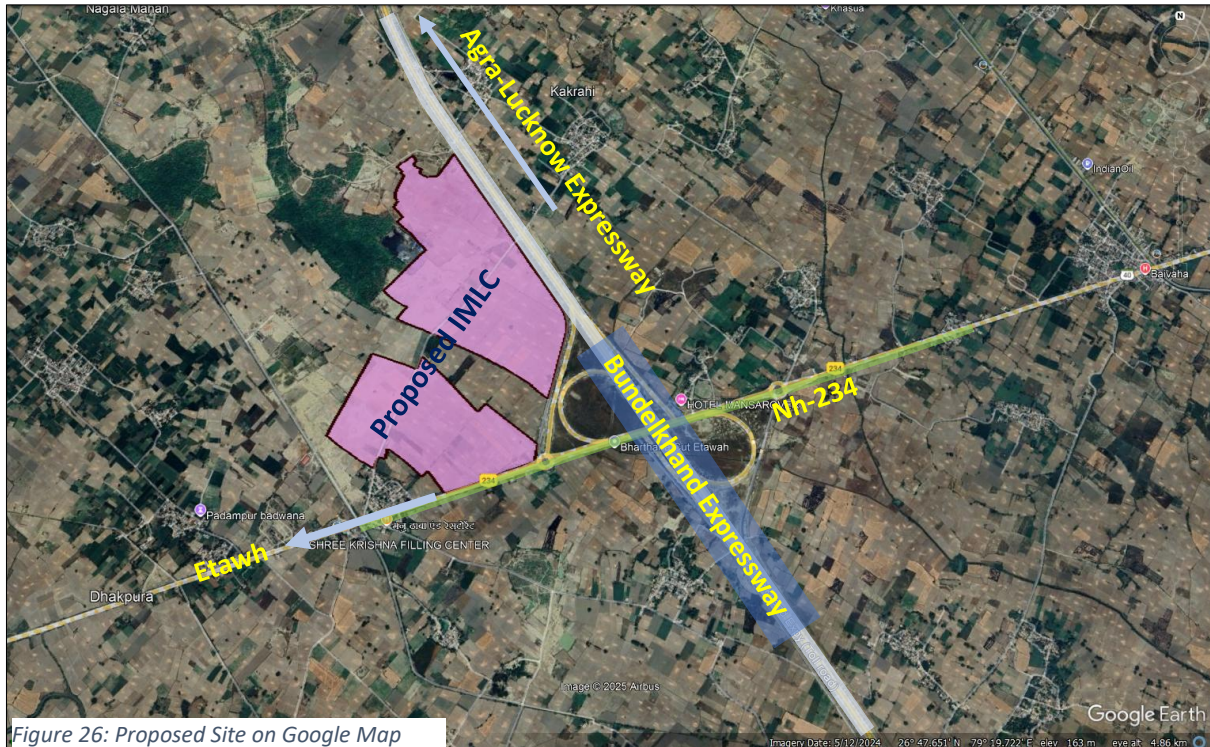


Figure 26: Proposed Site on Google Map

approximately **10 km south of the Agra–Lucknow Expressway**, ensuring excellent connectivity.

The details of proposed site are provided in the table below-

Sl.No.	Particulars	Details
1	Development Type	Greenfield
2	Location	The proposed site is situated about 30 km east of Etawah city, at the north-western corner of the Bundelkhand Expressway and NH-234 and approximately 10 km south of the Agra–Lucknow Expressway
3	Lat/Long	26.798511 / 79.322242
4	Nearest Railway Station	• Bharthana : Approx. 12 Km
5	Nearest ICD	• ICD agra – approx. 150 km
6	Nearest Airport	Agra Airport: approx. 150 km
7	One District One Product (ODOP)	Textile Products
8	Major Industries	• Petroleum Industry • Food Processing Industry
9	Nearest Industrial Area	• Agra

11.3 Kannauj

Kannauj, located in central Uttar Pradesh along the banks of the Ganga River, holds strategic importance due to its strong road and rail connectivity. It lies on National Highway 34 and is connected by key routes like State Highway 234 and the Delhi-Kanpur-Lucknow railway line, with Kannauj Railway Station serving as a major transit point. The city is approximately 140 km from Chaudhary Charan Singh International Airport in Lucknow. Surrounded by agricultural regions and close to industrial hubs like Kanpur, Kannauj is well-suited for growth in agro-processing, traditional perfumery, and logistics, making it a promising regional center for trade and industry.



Figure 27: Location Map

The proposed **Integrated Manufacturing and Logistics Cluster (IMLC)** in Kannauj is located in the village **Alipur Ahana and Thathiya** under **Tehsil Tirwa** and spans an area of **352 acre**. It is strategically situated approximately 20 km south of Kannauj city, at **kilometer 203 (203+000) on the right-hand side (RHS) of the Agra-Lucknow Expressway**. The site offers direct frontage along the expressway's

service road and lies about 15 km southeast of National Highway 234 (NH-234), providing excellent connectivity for regional trade and industrial development.



Figure 28: Proposed Site on Google Map

The details of proposed site are provided in the table below –

Sl.No.	Particulars	Details
1	Development Type	Greenfield
2	Location	The proposed site is located in Tehsil Tirva, approximately 20 km south of Kannauj city, positioned at Chainage 203+000 on the right-hand side (RHS) of the Agra-Lucknow Expressway.
3	Lat/Long	26.911222 / 79.884637
4	Nearest Railway Station	• Araul Makanpur: Approx. 15 Km
5	Nearest ICD	• ICD Kanpur – approx. 80 km
6	Nearest Airport	Kanpur Airport: approx. 90 km
7	One District One Product (ODOP)	Perfume (Attar)
8	Major Industries	<ul style="list-style-type: none"> • Aromatic Industry • Food Processing Industry (Potato)
9	Nearest Industrial Area	• Panki Industrial Area in Kanpur

12 Proposed IMLCs along the Purvanchal Expressway

The **Purvanchal Expressway** is rapidly emerging as a catalyst for economic transformation in eastern Uttar Pradesh. In alignment with this growth trajectory, the **Uttar Pradesh Expressways Industrial Development Authority (UPEIDA)** has proposed the development of **Integrated Manufacturing and Logistics Clusters (IMLCs)** at **Barabanki, Amethi, Sultanpur, Ambedkar Nagar, and Ghazipur**. These IMLCs aim to unlock the industrial potential of the Purvanchal region by leveraging local strengths such as agri-processing, handicrafts, and traditional industries.

Strategically located along the expressway, these clusters will offer **well-planned industrial, logistics, and warehousing zones** with seamless road connectivity, proximity to skilled labor, and access to raw materials. UPEIDA will soon initiate the **allotment process for industrial plots** in these IMLCs to attract private investment and promote inclusive regional development. By integrating infrastructure with economic opportunity, the Purvanchal IMLCs are expected to generate employment, boost exports, and contribute significantly to the socio-economic upliftment of the region, forming a modern industrial corridor in eastern Uttar Pradesh.

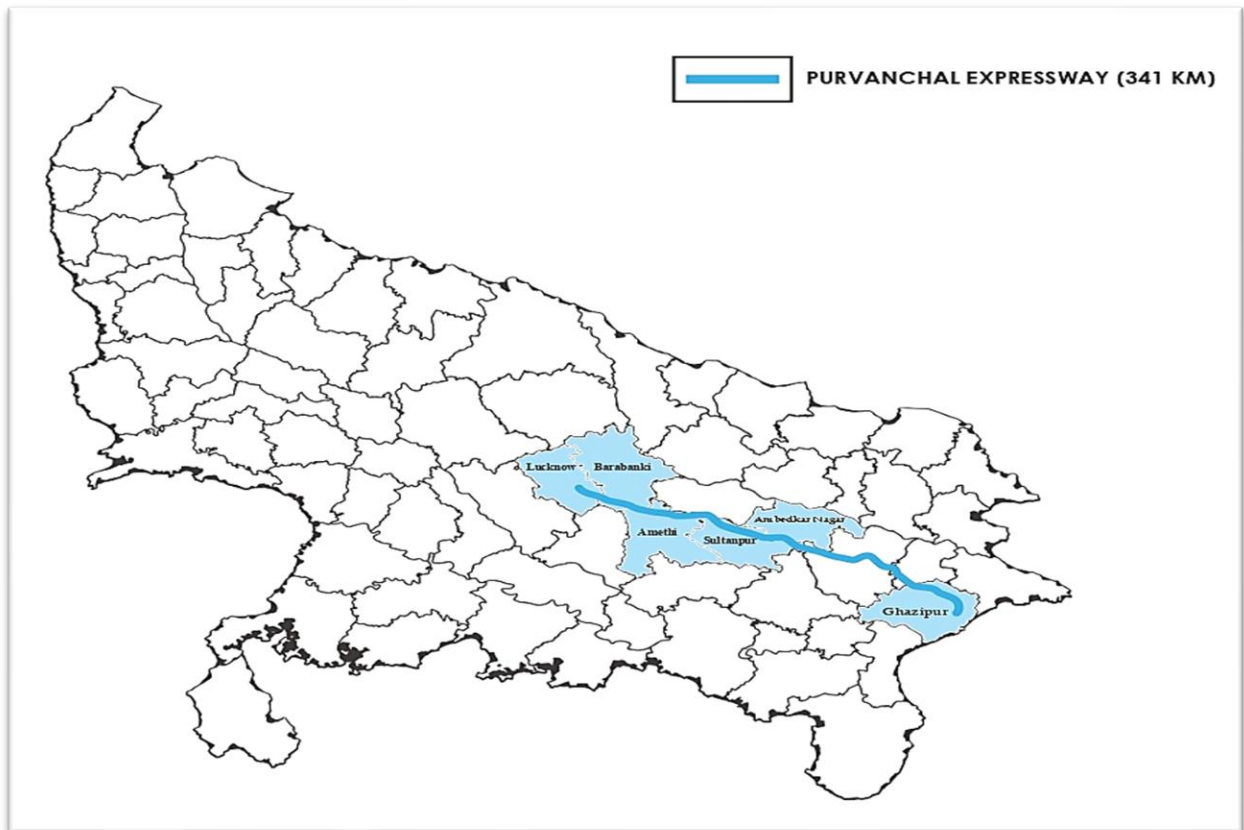


Figure 29: Proposed IMLCs along Purvanchal Expressway

12.1 Barabanki

Barabanki, located in central Uttar Pradesh near Lucknow, is strategically positioned for logistics development with strong connectivity via National Highway 28, major district roads, and the Barabanki Junction railway station. Just 40 km from Chaudhary Charan Singh International Airport, it offers excellent multimodal access. Surrounded by agricultural areas and close to major consumption and industrial hubs, Barabanki is ideal for the proposed Integrated Municipal Logistics Center (IMLC), supporting growth in agro-logistics, warehousing, and regional trade.



Figure 30: Location Map

EOI for 27 IMLC & 6 DIC

The proposed **Integrated Manufacturing and Logistics Cluster (IMLC)** in **Barabanki** is located in the village **Bamhrauli, Satrahi, Gharkuiya, Pechrua, Bahrapur and Andaumau** under Tehsil **Haidargarh**, covering an area of **609 acre**. Strategically positioned approximately **50 km southeast of Lucknow** and **40 km south of Barabanki city**, the site is situated at **kilometer 38 (38+000)** from the start point of the expressway in Lucknow on the **right-hand side (RHS)** of the **Purvanchal Expressway**, with direct frontage along its service road. The other side of the site boundary is flanked by **State Highway 13 (SH-13)** and the **Haidargarh Railway Station**. further enhancing its accessibility and connectivity for industrial and logistics development.



Figure 31: Proposed Site on Google Map

The details of proposed site are provided in the table below –

Sl.No.	Particulars	Details
1	Development Type	Greenfield
2	Location	The proposed site is located in Tehsil Haidargarh, Barabanki, the IMLC site lies at CH-38+000 on the RHS of the Purvanchal Expressway, with frontage on its service road and SH-13 & Haidargarh Railway station on the other side, ensuring excellent connectivity.
3	Lat/Long	26.627494/ 81.376684
4	Nearest Railway Station	<ul style="list-style-type: none"> Along the Haidargarh Railway station
5	Nearest ICD	<ul style="list-style-type: none"> ICD Kanpur – approx. 140 km
6	Nearest Airport	Lucknow Airport: approx. 90 km
7	One District One Product (ODOP)	Textile Products

EOI for 27 IMLC & 6 DIC

8	Major Industries	<ul style="list-style-type: none"> • Handloom Textiles • Agro-based industries
9	Nearest Industrial Area	<ul style="list-style-type: none"> • Agro Park Industrial Area on Kursi Road, Barabanki

12.2 Amethi

Amethi, located in southeastern Uttar Pradesh, is strategically positioned for industrial and logistics development, supported by robust road and rail connectivity. The district is well-served by National Highways 931 and 128, along with State Highways 31, 330, and 330A, ensuring efficient access to regional markets. The presence of multiple railway stations, including Gauriganj, Musafirkhana, and Amethi, enhances multimodal transport options. Positioned near key districts like Barabanki, Raebareli, and Ayodhya (Faizabad), and surrounded by fertile agricultural zones, Amethi offers a strong foundation for establishing the proposed Integrated Manufacturing and Logistics Cluster (IMLC). Its location makes it ideal for agro-processing, warehousing, and regional trade integration.



Figure 32: Location Map

EOI for 27 IMLC & 6 DIC

The proposed **Integrated Manufacturing and Logistics Cluster (IMLC)** in **Amethi** is situated in the village **Sewra and Uchagaw** under **Tehsil Musafirkhana**, spanning an area of **367 acre**. Strategically located approximately 60 km northwest of Amethi city, the site lies **at kilometer 59 (59+000) from the start point in Lucknow on the right-hand side (RHS) of the Purvanchal Expressway**, with direct frontage along the expressway's service road. Its boundary on the other side is flanked by State Highway 31 (SH-31), further enhancing its accessibility and connectivity for industrial and logistics development.

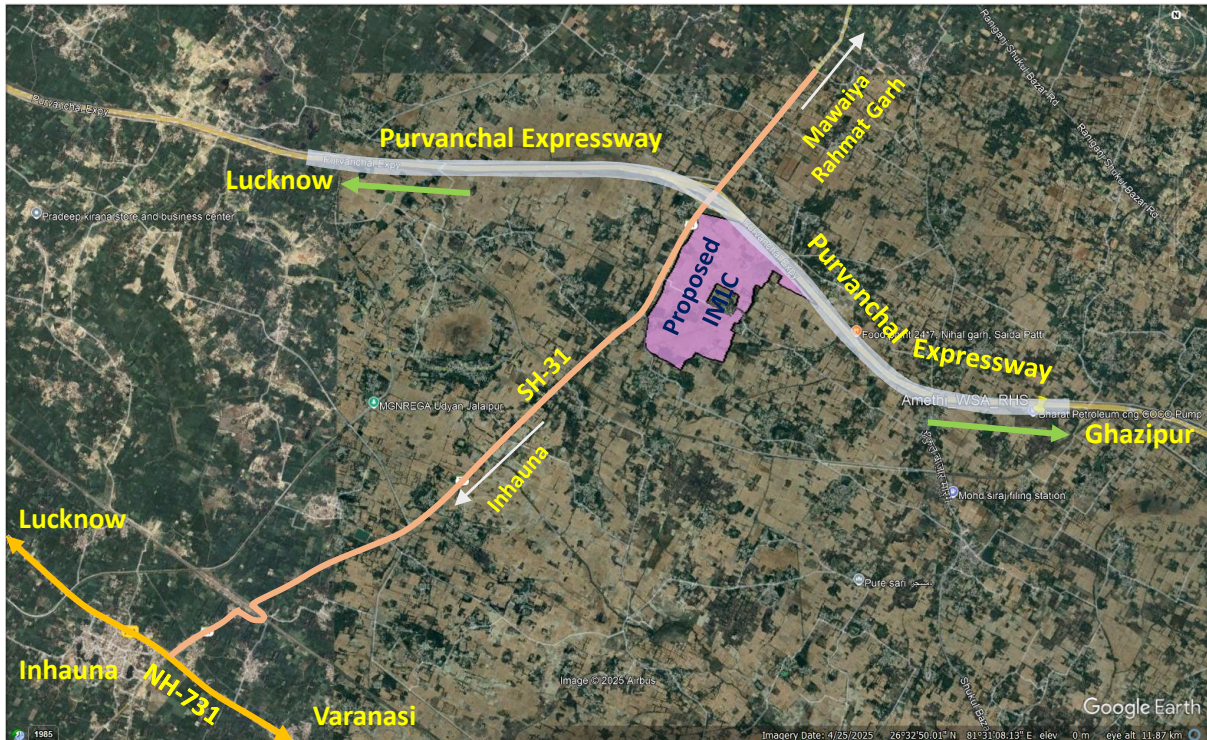


Figure 33: Proposed Site on google Map

The details of proposed site are provided in the table below –

Sl.No.	Particulars	Details
1	Development Type	Greenfield
2	Location	The proposed site is located in Tehsil Musafirkhana, the IMLC site lies at CH-59+000 on the RHS of the Purvanchal Expressway, with frontage on its service road and SH-31 on the other side, ensuring excellent connectivity.
3	Lat/Long	26.562373/ 81.557145
4	Nearest Railway Station	• Akbargang approx. 7 km
5	Nearest ICD	• ICD Kanpur – approx. 163 km
6	Nearest Airport	Lucknow Airport: approx. 85 km
7	One District One Product (ODOP)	Moonj Products
8	Major Industries	<ul style="list-style-type: none"> • Moonj Industries • Industry of Fertilizers

		<ul style="list-style-type: none"> • Cement Industry • Electronic Industries
9	Nearest Industrial Area	<ul style="list-style-type: none"> • Jagdishpur Industrial Area

12.3 Sultanpur

Sultanpur, located in eastern Uttar Pradesh, is strategically positioned for developing an **Integrated Manufacturing and Logistics Cluster (IMLC)**, supported by strong connectivity through National Highways NH-56, NH-96, and NH-330A, as well as a major railway line passing through Sultanpur city. Its proximity to key districts like Ayodhya (Faizabad), Ambedkar Nagar, Jaunpur, and Amethi enhances regional access, while fertile agricultural surroundings and towns like Lambhua, Kurebhar, and Dostpur offer a robust foundation for agro-processing, warehousing, and logistics. This makes Sultanpur an ideal hub for regional trade integration and industrial growth.

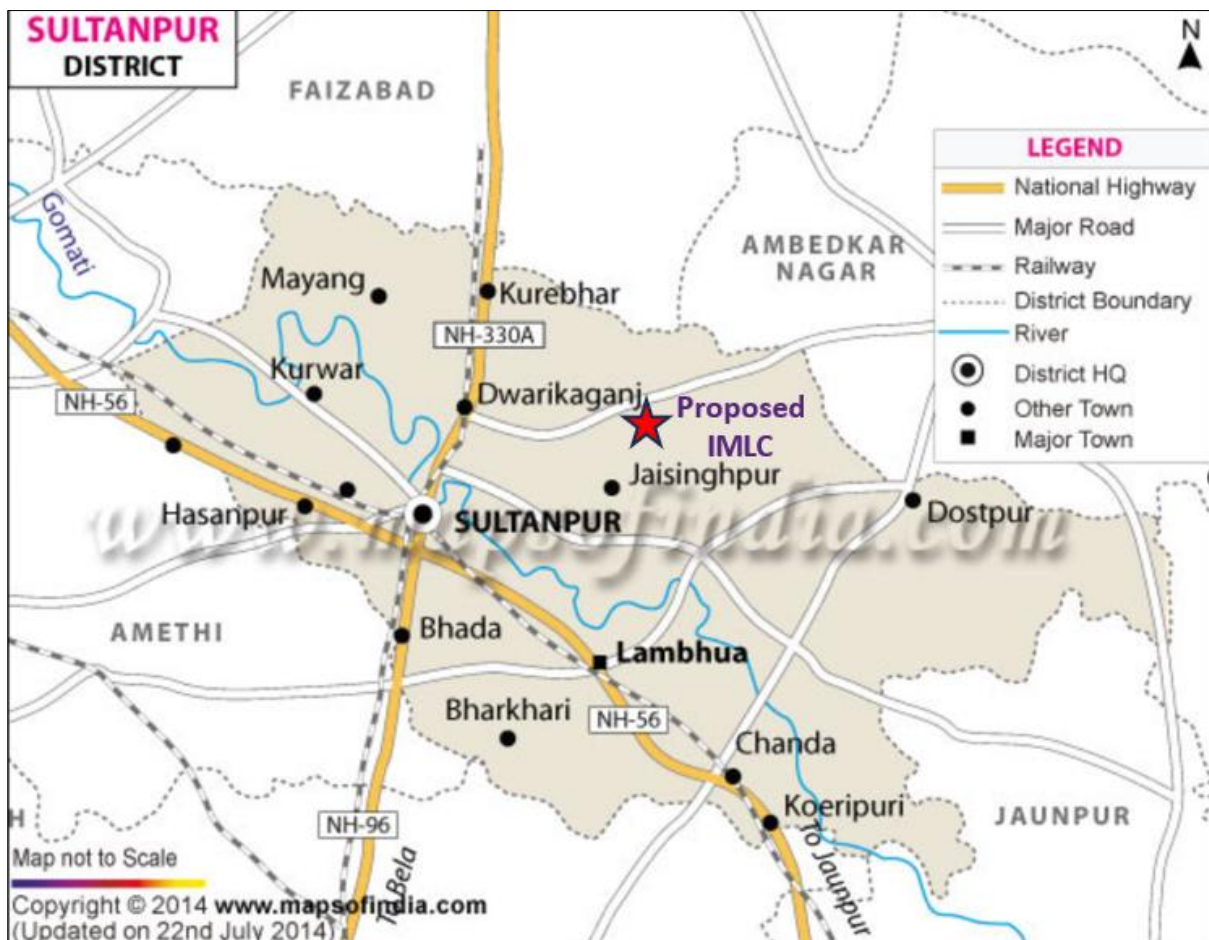


Figure 34: Location Map

The proposed **Integrated Manufacturing and Logistics Cluster (IMLC)** in **Sultanpur** is located in the village **Karebhan, Mahmudpur Semari, Lathwa, Kalyanpur, Visundaspur, Chadpur, Chirandih, Sawai and Amaliya Sikara** under Tehsil **Jaysinghpur**, covering an area of **811 acre**. Strategically positioned approximately **30 km northeast of Sultanpur city**, the site is situated at **kilometer 139 (139+000)** from

the start point of the expressway in Lucknow on the right-hand side (RHS) of the Purvanchal Expressway. It enjoys direct frontage along the expressway’s service road, ensuring seamless access. Additionally, National Highway 128 (NH-128) is located just 500 meters to the northwest of the site, further enhancing regional connectivity and making the location highly suitable for industrial and logistics development.

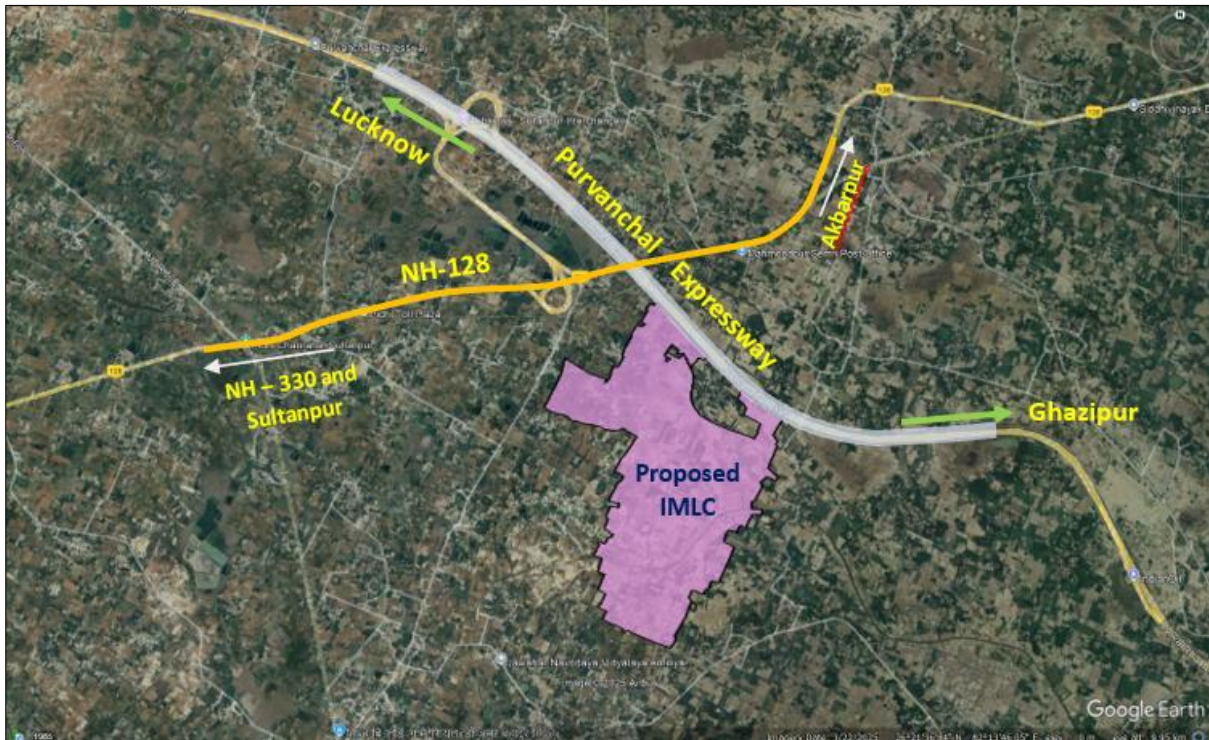


Figure 35: Proposed Site on Google Map

The details of proposed site are provided in the table below –

Sl.No.	Particulars	Details
1	Development Type	Greenfield
2	Location	The proposed site is located in Tehsil Jaysinghpur, the IMLC site lies at CH-139+000 on the RHS of the Purvanchal Expressway.
3	Lat/Long	26.335848 / 82.277714
4	Nearest Railway Station	• Kurebhar: approx.20 km
5	Nearest ICD	• ICD Kanpur – approx. 245 km
6	Nearest Airport	Ayodhya Airport: approx. 60 km
7	One District One Product (ODOP)	Moonj Products
8	Major Industries	• Moonj Rope Cluster • Sugar Mills
9	Nearest Industrial Area	• Jagdishpur Industrial Area

12.4 Ambedkar Nagar

Ambedkar Nagar, in eastern Uttar Pradesh, is well-suited for an **Integrated Manufacturing and Logistics Cluster (IMLC)** due to its strong road and rail connectivity, proximity to key districts like Faizabad, Sultanpur, and Azamgarh, and fertile agricultural surroundings. With major towns like Akbarpur and Malipur and access to regional markets, the district offers excellent potential for agro-processing, warehousing, and logistics development.

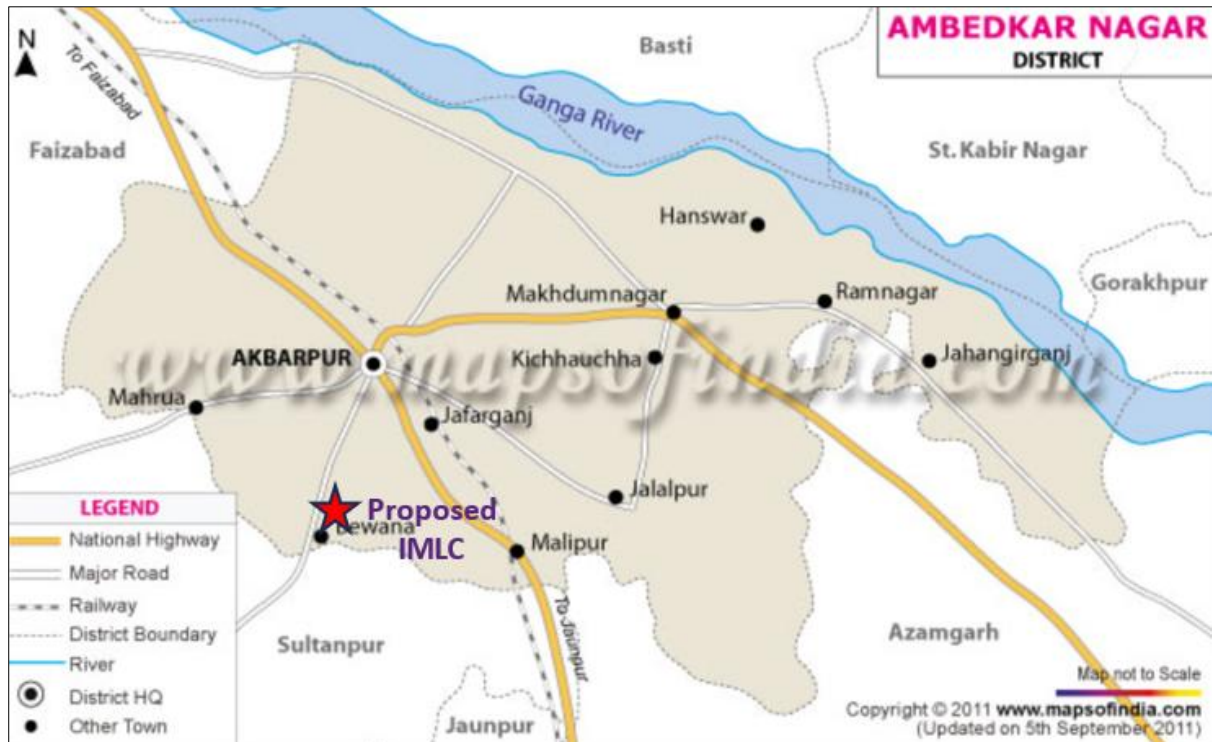


Figure 36: Location Map

The proposed **Integrated Manufacturing and Logistics Cluster (IMLC)** in **Ambedkar Nagar** is located in the village **Bewana, Jagdishpur Muslimpur, and Khanjahapur** under **Tehsil Akbarpur**, spanning an area of **570 acre**. Strategically situated approximately **12 km south of Akbarpur city**, the site lies near **Kilometer 161.100 (161+100)** from the start point of the expressway in Lucknow on the left-hand side (LHS) of the **Purvanchal Expressway**. It is located about **6 km north of the Purvanchal expressway** and is in **close proximity to Major District Road (MDR) 113E**, ensuring convenient access and connectivity.



Figure 37: proposed Map on google Map

The details of proposed site are provided in the table below –

Sl.No.	Particulars	Details
1	Development Type	Greenfield
2	Location	The proposed site is located in Tehsil Akbarpur, positioned near CH-161+100 on the left-hand side (LHS) of the Purvanchal Expressway, approximately 6 km north of the expressway alignment.
3	Lat/Long	26.321176 / 82.504369
4	Nearest Railway Station	• Jafarganj: approx.12 km
5	Nearest ICD	• ICD Mirjapur – approx. 160 km
6	Nearest Airport	Ayodhya Airport: approx. 70 km
7	One District One Product (ODOP)	Textile Products
8	Major Industries	<ul style="list-style-type: none"> • Textile Industries • Sugar Plant • Cement manufacturing Plant • Agriculture Industries
9	Nearest Industrial Area	• Jainpur Industrial Area, Akbarpur

12.5 Ghazipur

Ghazipur, located in eastern Uttar Pradesh along the banks of the Ganges River, holds strategic significance for developing an Integrated Manufacturing and Logistics Cluster (IMLC). The district is well-connected through key National Highways NH-24 and NH-31, with strong rail connectivity intersecting important towns like Ghazipur, Dildarnagar, and Zamania. Its proximity to bordering districts such as Varanasi, Jaunpur, Ballia, Mau, and even the state of Bihar enhances inter-regional trade accessibility. With a fertile agricultural belt and key towns like Bhitari, Sherpur, and Dullahapur, Ghazipur presents immense potential for agro-processing, logistics parks, and warehousing facilities, making it a promising hub for industrial and economic growth in the region.

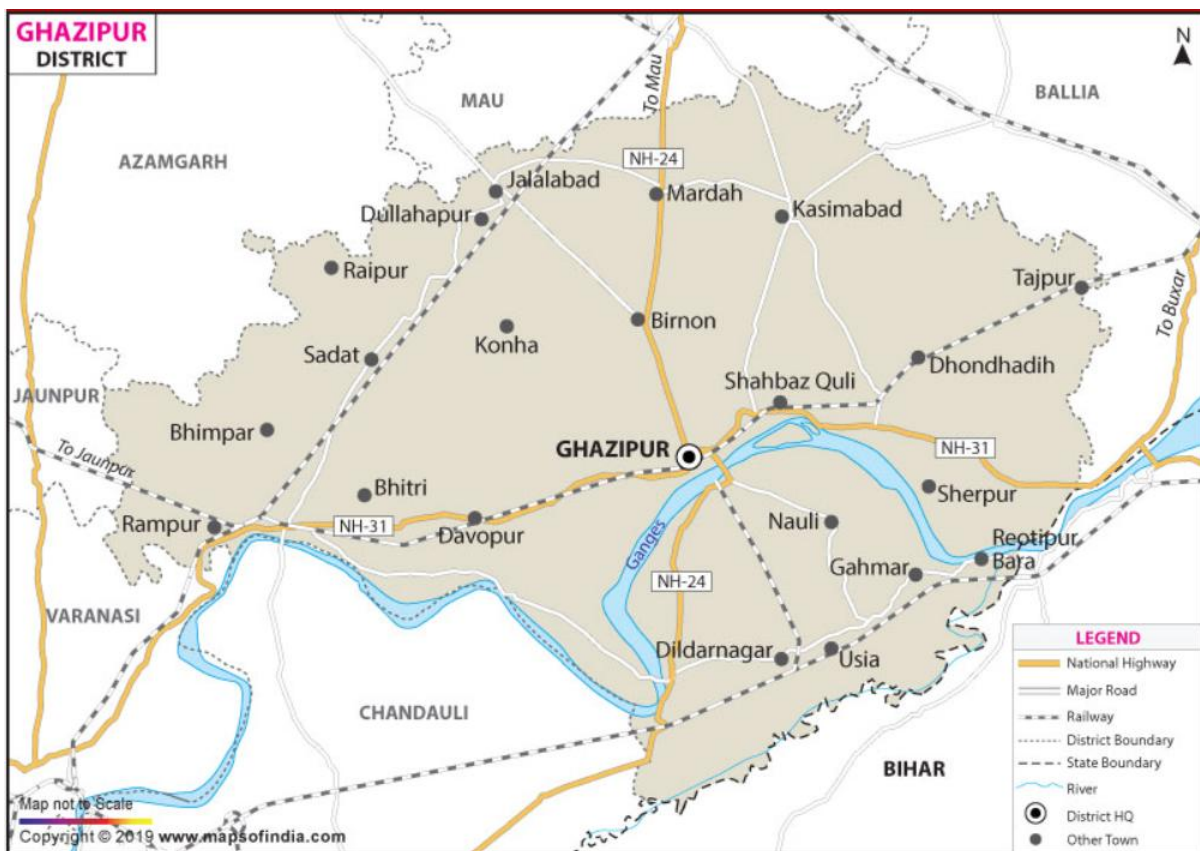


Figure 38: Location Map

The proposed **Integrated Manufacturing and Logistics Cluster (IMLC)** in **Ghazipur** is located in the village **Chabala, Chakdumariya, Awathahi Basant, Baghuri t Sonari, Chakbikhu, Maheshpur, Chakwajidpur, Machhati, Sonadi, chakfatama, Girdhriya, Bhopatpur M. Sonari and Jagdish t Machhati** under Tehsil **Mohammadabad**, covering an area of **1026 acre**. Strategically positioned approximately 30 km east of Ghazipur city, the site is situated at **kilometer 338.00 (338+000)** from the **start point of the expressway in Lucknow on the left-hand side (LHS) of the Purvanchal Expressway**, with convenient access to National Highway NH-31, which lies just 500 meters away. This prime

location ensures excellent connectivity and offers significant potential for industrial development and regional logistics integration.

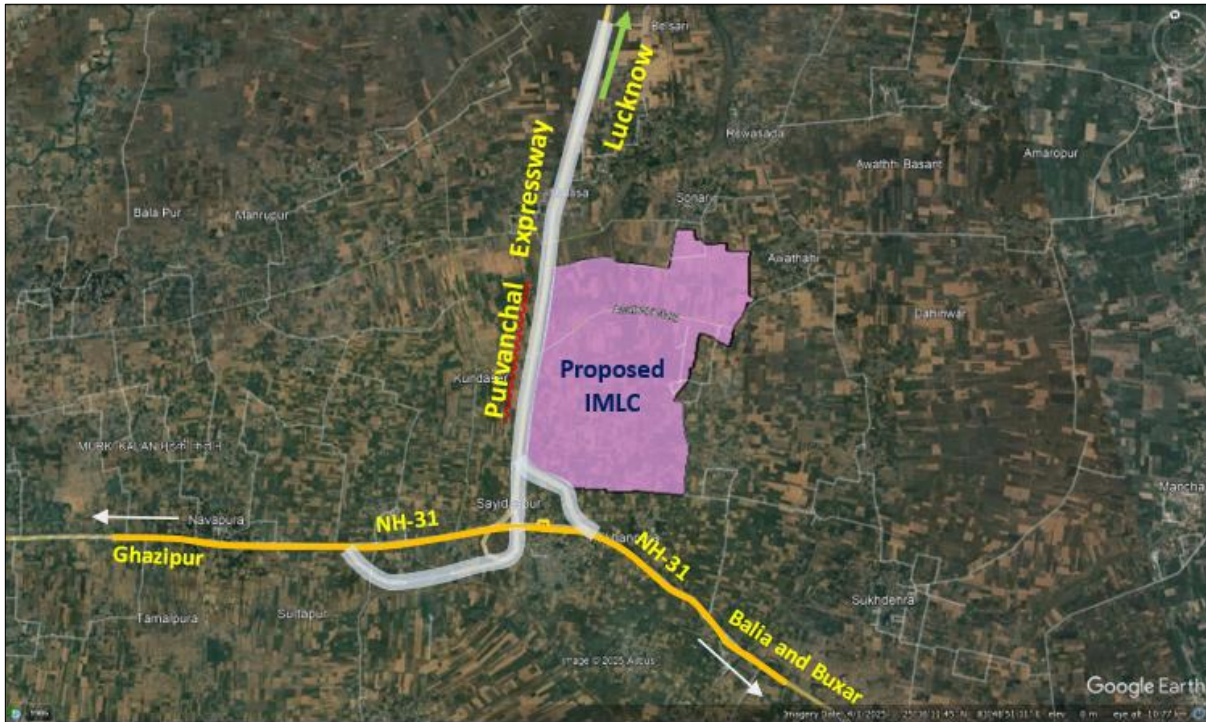


Figure 39: Proposed site on Google Map

The details of proposed site are provided in the table below –

Sl.No.	Particulars	Details
1	Development Type	Greenfield
2	Location	The proposed site is located in Tehsil Mohammadabad, positioned near CH-338+000 on the left-hand side (LHS) of the Purvanchal Expressway and 500 m from NH-31.
3	Lat/Long	25.613192/ 83.836557
4	Nearest Railway Station	• Yusufpur: approx.13 km
5	Nearest ICD	• ICD Mirjapur – approx. 175 km
6	Nearest Airport	Varansi Airport: approx. 124 km
7	One District One Product (ODOP)	Jute wall Hangings
8	Major Industries	<ul style="list-style-type: none"> • Opium & Allied Industries • Distilleries • Agro Energy Industries
9	Nearest Industrial Area	• Industrial Estate, Nandgunj, Ghazipur

13 Proposed IMLCs along Gorakhpur Link Expressway

The **Gorakhpur Link Expressway** is emerging as a key enabler of industrial development and economic connectivity in eastern Uttar Pradesh. In line with this vision, the **Uttar Pradesh Expressways Industrial Development Authority (UPEIDA)** has proposed the development of **Integrated Manufacturing and Logistics Clusters (IMLCs)** at **Ambedkar Nagar** and **Gorakhpur** to harness regional industrial potential and promote balanced economic growth.

These IMLCs are located to capitalize on local strengths such as agro-based industries, traditional crafts, and a skilled workforce. Designed as modern industrial ecosystems, the clusters will feature dedicated zones for manufacturing, logistics, and warehousing, supported by seamless road connectivity through the Gorakhpur Link Expressway.

With proximity to raw materials, availability of skilled labor, and strong transportation infrastructure, these clusters are poised to become competitive destinations for industrial investment. UPEIDA will soon initiate the process of allotting industrial plots in these IMLCs, encouraging private sector participation and entrepreneurship.

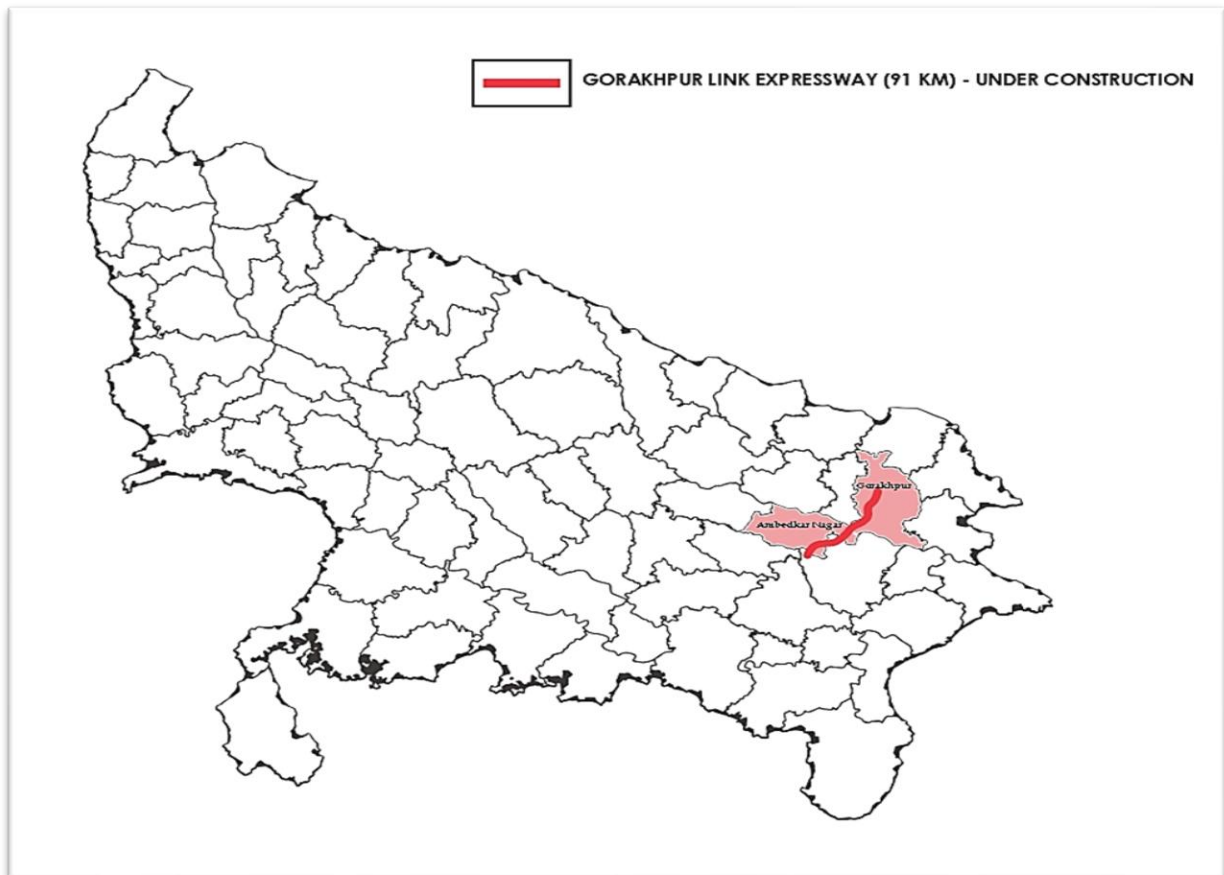


Figure 40: Proposed IMLC along Gorakhpur Link Expressway

13.1 Ambedkar Nagar

Ambedkar Nagar, in eastern Uttar Pradesh, is well-suited for an **Integrated Manufacturing and Logistics Cluster (IMLC)** due to its strong road and rail connectivity, proximity to key districts like Faizabad, Sultanpur, and Azamgarh, and fertile agricultural surroundings. With major towns like Akbarpur and Malipur and access to regional markets, the district offers excellent potential for agro-processing, warehousing, and logistics development.

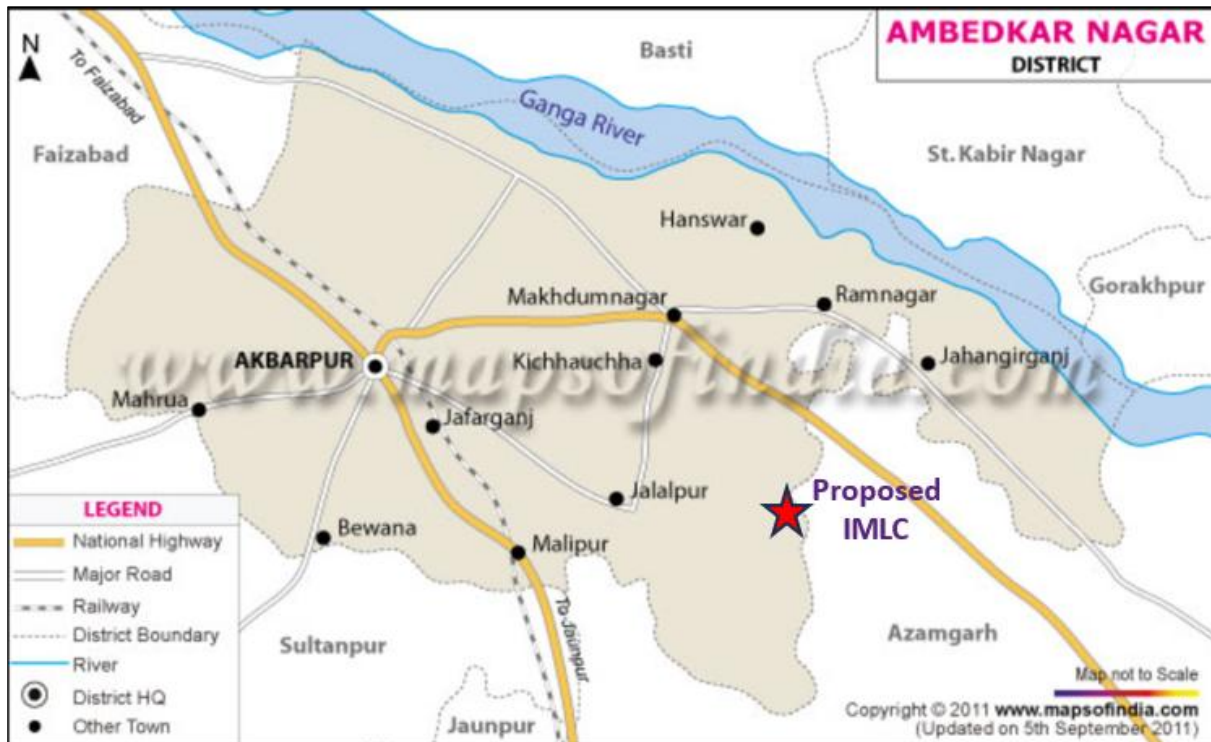


Figure 41: Location Map

The proposed **Integrated Manufacturing and Logistics Cluster (IMLC)** in **Ambedkar Nagar** is located in the village **Nurpurkala and Ajamalpur** under **Tehsil Jalalpur**, covering an area of **361 acre**. Strategically positioned about **40 km southeast of Akbarpur city**, the site is situated at **Kilometer 73 (73+000)** from the start point of the expressway in **Gorakhpur** on the left-hand side (LHS) of the **Gorakhpur Link Expressway**, with direct frontage along the expressway's service road.



Figure 42: Proposed Site on Google Map

The details of proposed site are provided in the table below –

Sl.No.	Particulars	Details
1	Development Type	Greenfield
2	Location	The proposed site is located in Tehsil jalalpur, positioned near CH-73+000 on the left-hand side (LHS) of the Gorakhpur Link Expressway with direct frontage along the expressway's service road.
3	Lat/Long	26.298686/82.85592
4	Nearest Railway Station	• Bilwai: approx.30 km
5	Nearest ICD	• ICD Mirjapur – approx. 160 km
6	Nearest Airport	Ayodhya Airport: approx. 70 km
7	One District One Product (ODOP)	Textile Products
8	Major Industries	<ul style="list-style-type: none"> • Textile Industries • Sugar Plant • Cement manufacturing Plant • Agriculture Industries
9	Nearest Industrial Area	• Jainpur Industrial Area, Akabarpur

13.2 Gorakhpur

The proposed **Integrated Manufacturing and Logistics Cluster (IMLC)** in **Gorakhpur** is strategically located in northeastern Uttar Pradesh near the Indo-Nepal border, offering excellent connectivity to eastern UP, Bihar, and Nepal. Positioned along the **Gorakhpur Link Expressway**, the site benefits from strong road and rail infrastructure, proximity to districts like Deoria and Kushinagar, and access to national and international markets. With a growing urban base and skilled workforce, the site is well-suited for agro-processing, pharmaceuticals, warehousing, and logistics development.



Figure 43: Location Map

EOI for 27 IMLC & 6 DIC

The proposed **Integrated Manufacturing and Logistics Cluster (IMLC)** in **Gorakhpur** is located in the village **Bahadurpur khurd** and **Bahadurpur Buzurg** under **Tehsil Khajani**, spanning an area of **153 acre**. Strategically positioned approximately 50 km southwest of Gorakhpur city, the site lies at **kilometer 36.800 (36+800)** from the start point of the expressway in Gorakhpur on the **right-hand side (RHS)** of the **Gorakhpur Link Expressway**, with direct frontage along the expressway's service road.

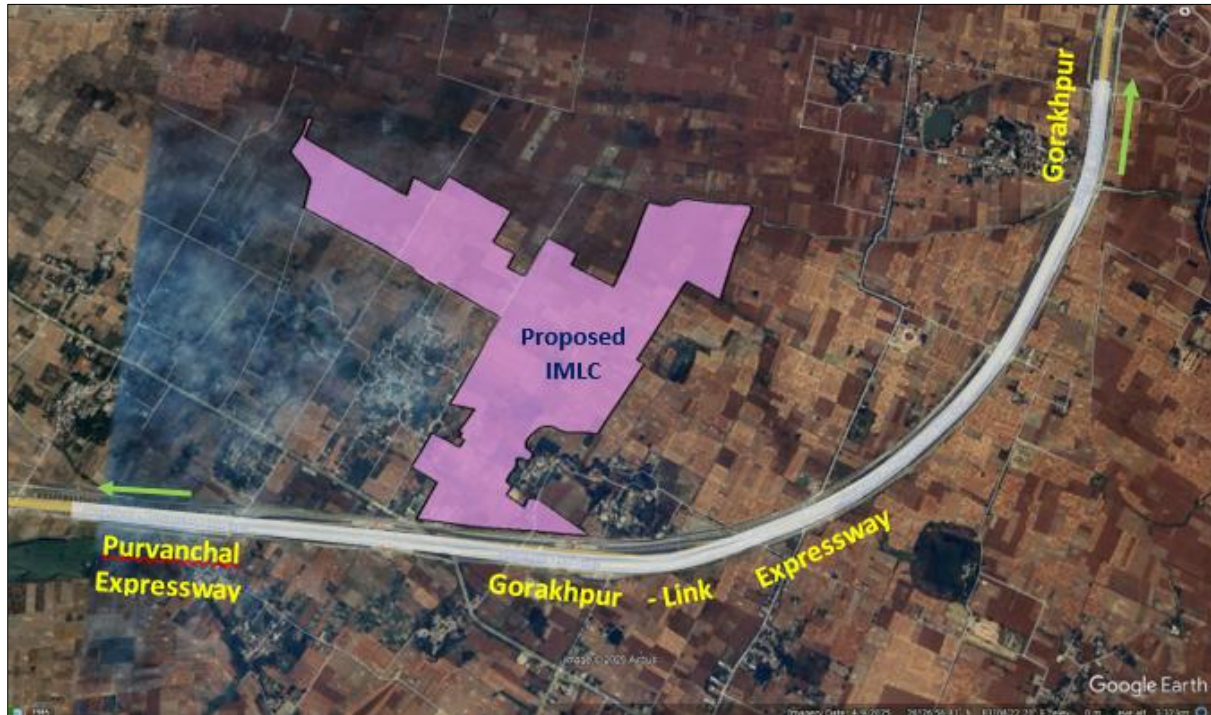


Figure 44: Proposed Site on google Map

The details of proposed site are provided in the table below –

Sl.No.	Particulars	Details
1	Development Type	Greenfield
2	Location	The proposed site is located in Tehsil Khajani, positioned near CH-36+800 on the Right-hand side (RHS) of the Gorakhpur Link Expressway with direct frontage along the expressway's service road.
3	Lat/Long	26.449518/ 83.150076
4	Nearest Railway Station	<ul style="list-style-type: none"> Gorakhpur Jn: approx.50 km
5	Nearest ICD	<ul style="list-style-type: none"> ICD Kanpur – approx. 340 km
6	Nearest Airport	Gorakhpur Airport: approx. 50 km
7	One District One Product (ODOP)	Terracotta
8	Major Industries	<ul style="list-style-type: none"> Sugar Mill Textile Industries Surgical Products Industries Food Industries Garment Industries
9	Nearest Industrial Area	<ul style="list-style-type: none"> Gorakhpur Industrial Area

14 Proposed IMLCs along Bundelkhand Expressway

The **Bundelkhand Expressway** is poised to become a key enabler of **economic revitalization** in the **Bundelkhand region** of Uttar Pradesh. To harness this potential, the **Uttar Pradesh Expressways Industrial Development Authority (UPEIDA)** has proposed the development of **Integrated Manufacturing and Logistics Clusters (IMLCs)** at **Auraiya, Jalaun, Mahoba, Hamirpur, Banda, and Chitrakoot**. These IMLCs are envisioned to catalyze **industrial development** by capitalizing on the region's core strengths such as **agro-based industries, minerals, stonecraft, and traditional crafts**.

Strategically positioned along the expressway, the proposed IMLCs will offer **integrated zones** for **manufacturing, logistics, and warehousing** with robust road connectivity, proximity to local raw materials, and access to a readily available workforce. **UPEIDA** plans to commence the allotment of industrial plots within these clusters to attract private sector participation and accelerate balanced regional development. By aligning infrastructure development with economic activities, the Bundelkhand IMLCs are expected to stimulate employment generation, enhance local entrepreneurship, and play a pivotal role in transforming Bundelkhand into a thriving industrial corridor in southern Uttar Pradesh.

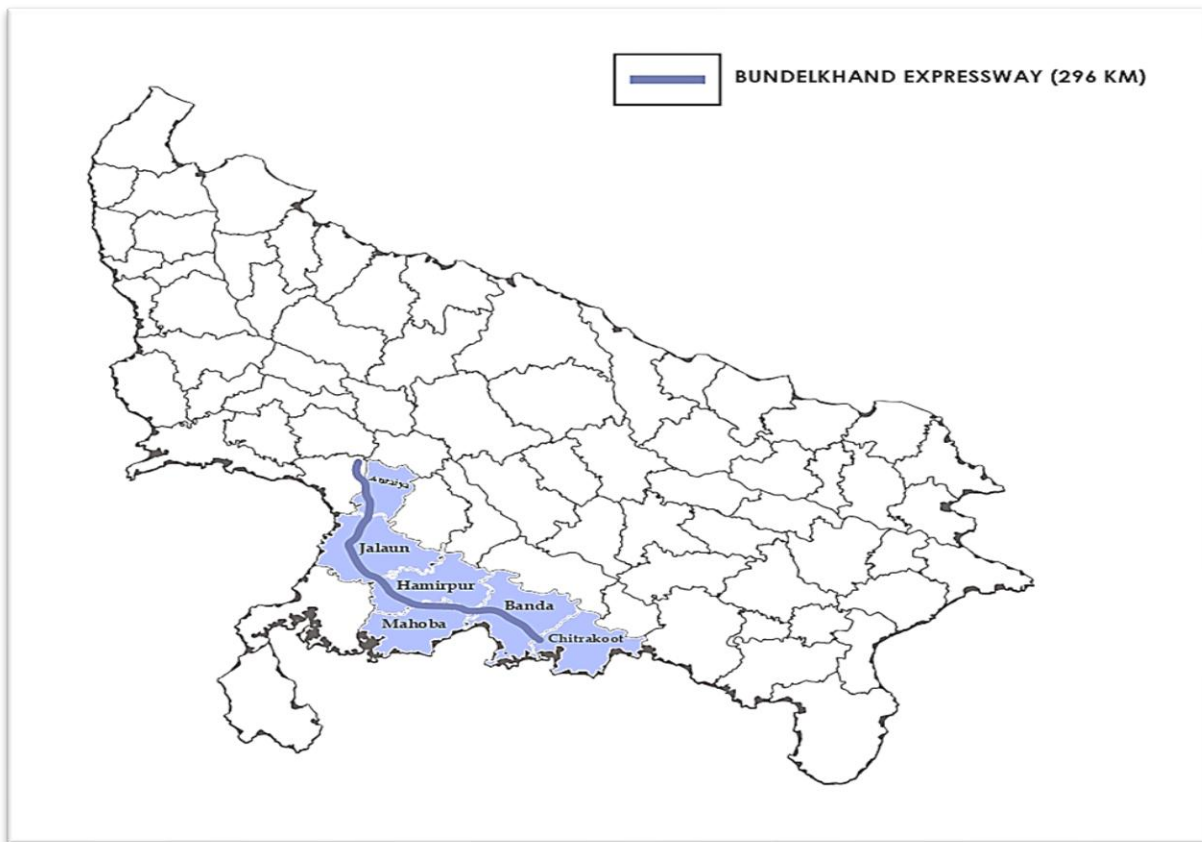


Figure 45: Proposed IMLCs along Bundelkhand Expressway

14.1 Auraiya

Auraiya district, located in southwestern Uttar Pradesh along the **Bundelkhand Expressway**, offers a **strategic location** for the proposed **IMLC** with excellent **road and rail connectivity** to key cities like **Kanpur and Lucknow**. Its proximity to **agricultural zones**, availability of **industrial land**, and access to a **skilled workforce** make it ideal for developing a **manufacturing and logistics hub**, supporting regional economic growth.



Figure 46: Location Map

The proposed **Integrated Manufacturing and Logistics Cluster (IMLC)** in **Auraiya** is located in the village **Mihauli** and **Nigada** under **Tehsil Sadar**, spanning an area of **324 acre**. Strategically positioned approximately 10 km western side of Auraiya, the site lies at **kilometer 244 (244+000)** from the **start point of the expressway in Chitrakoot on the right-hand side (RHS) of the Bundelkhand Expressway**, with direct frontage along the expressway’s service road.



Figure 47: Proposed Site on google Map

The details of proposed site are provided in the table below –

Sl.No.	Particulars	Details
1	Development Type	Greenfield
2	Location	The proposed site in Tehsil Sadar is strategically located along the Bundelkhand Expressway with direct access to its service road, and NH-19 runs along the other side.
3	Lat/Long	26.49671/ 79.437422
4	Nearest Railway Station	• Phaphund (Dibiyapur): approx.22 km
5	Nearest ICD	• ICD Kanpur – approx. 100 km
6	Nearest Airport	Kanpur Airport: approx. 120 km
7	One District One Product (ODOP)	Milk Processing (Desi Ghee)
8	Major Industries	<ul style="list-style-type: none"> • Milk processing Units (Desi Ghee) • Rice and Dal Mills • Gas Industries
9	Nearest Industrial Area	• Dibiyapur

14.2 Jalaun

Jalaun district, located in the southern part of Uttar Pradesh, occupies a strategic position along the **Bundelkhand Expressway**, making it a prime site for the proposed **Integrated Manufacturing and Logistics Cluster (IMLC)**. The district enjoys excellent connectivity through the expressway as well as nearby **national highways and railway networks**, facilitating smooth transportation of raw materials and finished goods. Jalaun's rich agricultural base, coupled with its emerging industrial zones and availability of skilled labor, positions it well to attract manufacturing and logistics investments. The IMLC in Jalaun is expected to leverage these locational advantages to foster regional industrial growth and boost economic development in Bundelkhand.



Figure 48: Location Map

The proposed **Integrated Manufacturing and Logistics Cluster (IMLC)** in Jalaun is situated in the village **Kusumilia, Dakor, and Timaro** under **Tehsil Orai**, covering an area of **1677 acre**. Strategically located approximately **38 km south of Jalaun town**, the site lies at **kilometer 167 (167+000)** from the start point of the expressway in Chitrakoot on the right-hand side (RHS) of the Bundelkhand Expressway,

with direct frontage along the expressway’s service road. Additionally, the SH-21 (Rath-Orai) road runs along the opposite side of the site, enhancing its accessibility.



Figure 49: Proposed Site on google Map

The details of proposed site are provided in the table below –

Sl.No.	Particulars	Details
1	Development Type	Greenfield
2	Location	The proposed site in Tehsil Orai is strategically located along the Bundelkhand Expressway with direct access to its service road, and SH-21 (Rath-Orai) runs along the opposite side of the site.
3	Lat/Long	25.890602 / 79.413663
4	Nearest Railway Station	• Bhua: approx.15 km
5	Nearest ICD	• ICD Kanpur – approx. 125 km
6	Nearest Airport	Kanpur Airport: approx. 140 km
7	One District One Product (ODOP)	Handmade Paper Art
8	Major Industries	• Handmade Paper Manufacturing Industries • Soap Industries
9	Nearest Industrial Area	• Orai-I and Orai-II

14.3 Mahoba

Mahoba district, located in the **Bundelkhand region of southern Uttar Pradesh**, is strategically positioned for the development of an **Integrated Manufacturing and Logistics Cluster (IMLC)** along the **Bundelkhand Expressway**. The district offers strong regional connectivity through major national highways (NH-34) and an existing railway network, linking it to key cities such as Jhansi, Banda, and Chhatarpur. The upcoming expressway further enhances its access to industrial hubs like Kanpur, Lucknow, and the NCR. With its central location, proximity to multiple towns like Kulpahar, Charkhari, and Kabrai, and potential for industrial expansion, Mahoba presents an ideal setting for promoting manufacturing, warehousing, and logistics infrastructure to boost regional economic development.

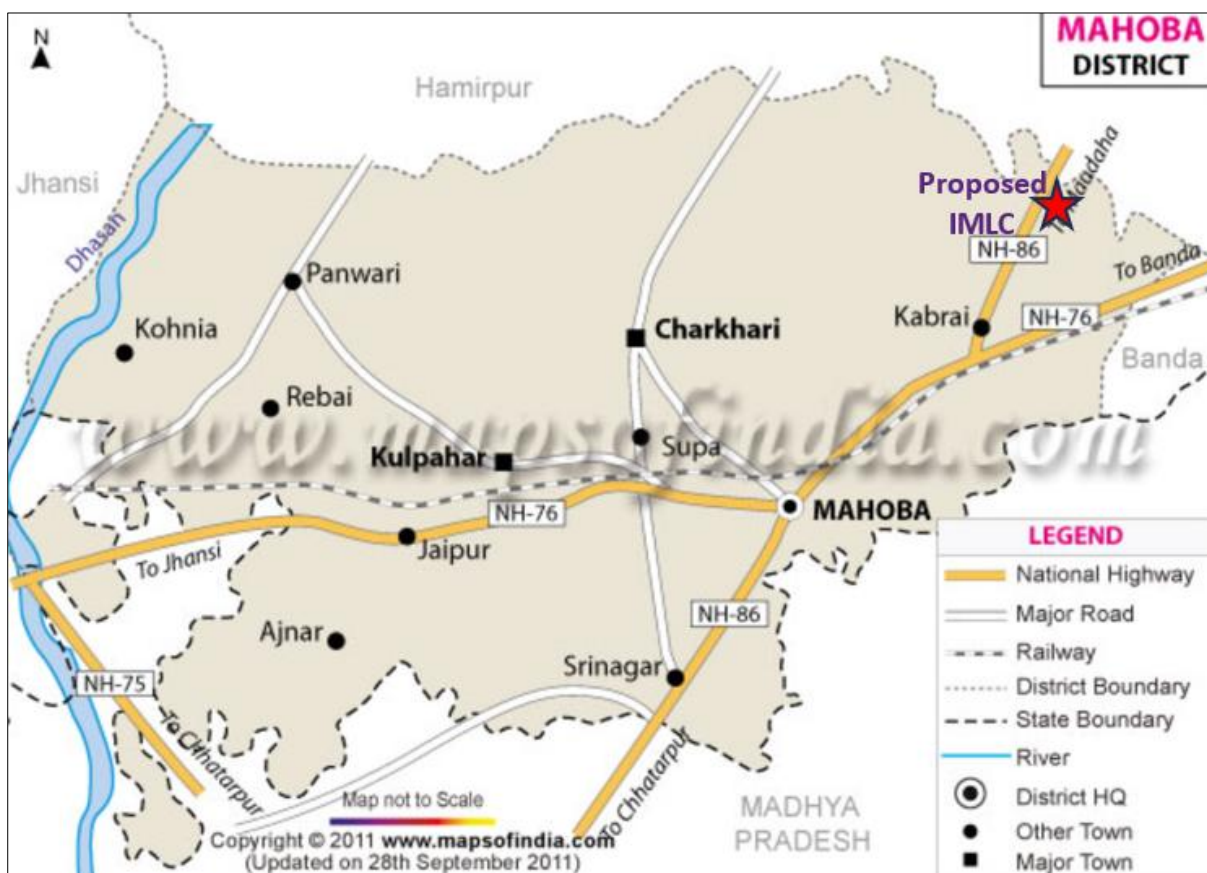


Figure 50: Location Map

The proposed **Integrated Manufacturing and Logistics Cluster (IMLC)** in **Mahoba** is located in the village **Khanna** under Tehsil **Sadar**, covering an area of **272 acre**. Strategically positioned approximately **40 km northeast of Mahoba town**, the site is situated at **kilometer 85.500 (85+500)** from the start point of the expressway in **chatrakoot** on the **right-hand side (RHS)** of the **Bundelkhand Expressway**, adjacent to the **NH-34 interchange**. It enjoys **direct frontage along the expressway's service road** on one side and **NH-34 on the other**, offering **excellent connectivity and access** for industrial and logistics development.



Figure 51: Proposed Site on Google Map

The details of proposed site are provided in the table below –

Sl.No.	Particulars	Details
1	Development Type	Greenfield
2	Location	The proposed site in Tehsil Sadar is located at the NH-34 interchange of the Bundelkhand Expressway, near Chainage CH-85+500 on the right-hand side (RHS), with direct access to the expressway's service road on one side and NH-34 on the other.
3	Lat/Long	25.580541/ 80.075058
4	Nearest Railway Station	• Akona: approx.10 km
5	Nearest ICD	• ICD Kanpur – approx. 110 km
6	Nearest Airport	Kanpur Airport: approx. 130 km
7	One District One Product (ODOP)	Gaura stone
8	Major Industries	<ul style="list-style-type: none"> • Gaura Stone industry • Storage Battery industry • Readymade Garments industry • Shoe & Leather Products industry • Food Processing industry
9	Nearest Industrial Area	• Banda

14.4 Hamirpur

The proposed Integrated Manufacturing and Logistics Cluster (IMLC) site in **Rath Tehsil, Hamirpur district**, lies in the southern part of Uttar Pradesh within the Bundelkhand region. The district enjoys good regional connectivity through **National Highway NH-34** and **State Highways SH-21 and SH-42**, linking it to nearby cities like Kanpur, Banda, and Mahoba. The **Bundelkhand Expressway**, passing near Rath, significantly enhances the site's accessibility and industrial potential. While Hamirpur is not directly on a major railway line, nearby stations such as **Bharuwa Sumerpur, Orai, and Banda** provide rail connectivity to key economic corridors. This strategic location, with access to road and rail networks, makes Rath an ideal destination for developing a manufacturing and logistics hub.



Figure 52: Location Map

EOI for 27 IMLC & 6 DIC

The proposed **Integrated Manufacturing and Logistics Cluster (IMLC)** in **Hamirpur** is located in the village **Inguhi** and **Dhanauri** under Tehsil **Rath**, covering an area of **259 acre**. Strategically positioned approximately **40 km northeast of Mahoba town**, the site is situated at **kilometer 125 (125+000)** from the start point of the expressway in **Chitrakoot** on the **Left-hand side (LHS)** of the **Bundelkhand Expressway**. It enjoys **direct frontage along the expressway's service road** on one side and **SH-42** on the other, offering **excellent connectivity and access** for industrial and logistics development.



Figure 53: Proposed Site on google Map

The details of proposed site are provided in the table below –

Sl.No.	Particulars	Details
1	Development Type	Greenfield
2	Location	The proposed site in Tehsil Rath is located at the Chainage CH-85+500 on the Left-hand side (LHS), with direct access to the expressway's service road on one side and SH-42 on the other.
3	Lat/Long	25.626391 / 79.694366
4	Nearest Railway Station	<ul style="list-style-type: none"> Akona: approx.50 km
5	Nearest ICD	<ul style="list-style-type: none"> ICD Kanpur – approx. 130 km
6	Nearest Airport	Kanpur Airport: approx. 130 km
7	One District One Product (ODOP)	Shoes
8	Major Industries	<ul style="list-style-type: none"> Shoe and Leather Industries Readymade Garment Industries Logistic Industries Metal Industries Steel Industries
9	Nearest Industrial Area	<ul style="list-style-type: none"> Sumerpur

14.5 Banda

The proposed Integrated Manufacturing and Logistics Cluster (IMLC) site in **Banda district**, located in the southeastern part of Uttar Pradesh, is part of the Bundelkhand region and holds significant strategic importance. The district is well-connected by **National Highway NH-35** and **State Highways SH-92 and SH-13**, providing seamless connectivity to key cities like **Chitrakoot, Hamirpur, Kanpur, and Prayagraj**. The **Bundelkhand Expressway**, which traverses the district, further boosts its accessibility and industrial appeal, especially for logistics and warehousing developments. While Banda city itself is served by a **broad-gauge railway line**, nearby stations such as **Atarra** and **Chitrakoot Dham** strengthen regional rail connectivity. With robust road and rail infrastructure, the proposed IMLC site in Banda is strategically positioned to support industrial expansion and regional economic development.



Figure 54: Location Map

The proposed **Integrated Manufacturing and Logistics Cluster (IMLC)** in **banda** is located in the village **Mahokhar, Jamalpur and Bargahni** under Tehsil **Sadar**, covering an area of **1426 acre**. Strategically positioned approximately **10 km northeast of Banda town**, the site is situated at **kilometer 52 (52+000)** from the start point of the expressway in Chitrakoot on both side **Left-hand side (LHS) & Right-hand side (LHS)** of the **Bundelkhand Expressway**. It enjoys **direct frontage** along the

expressway’s service road on one side and SH-13 on the other, offering excellent connectivity and access for industrial and logistics development.

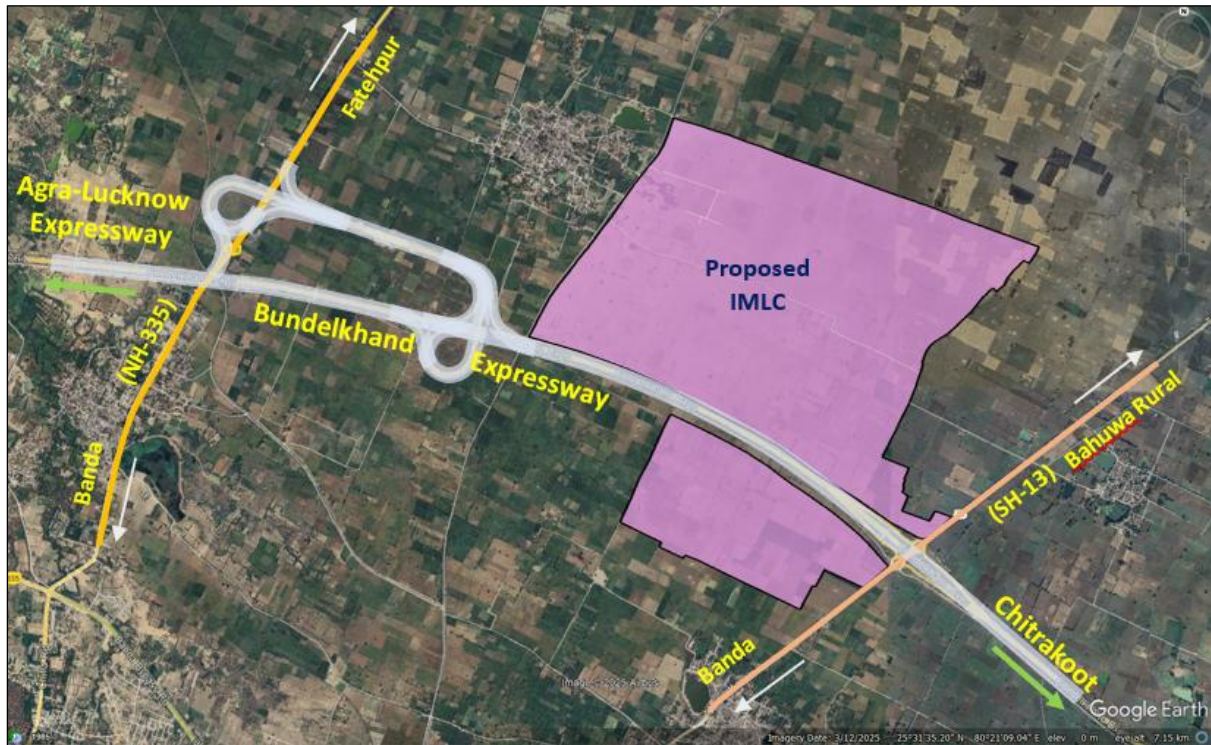


Figure 55: Proposed Site on Google Map

The details of proposed site are provided in the table below –

Sl.No.	Particulars	Details
1	Development Type	Greenfield
2	Location	The proposed site in Tehsil Sadar is located at the Chainage CH-52+000 on the Both side (LHS & RHS) of Bundelkhand Expressway, with direct access to the expressway’s service road on one side and SH-13 on the other.
3	Lat/Long	25.538499/ 80.39566
4	Nearest Railway Station	• Banda: approx.12 km
5	Nearest ICD	• ICD Kanpur – approx. 130 km
6	Nearest Airport	Kanpur/Khajuraho Airport: approx. 114 km
7	One District One Product (ODOP)	Shazar Stone Craft
8	Major Industries	• Sazar Stone • Food Processing
9	Nearest Industrial Area	• Bhuragarh (Bhurandi)

14.6 Chitrakoot

The proposed Integrated Manufacturing and Logistics Cluster (IMLC) in **Chitrakoot district**, situated in the southeastern part of Uttar Pradesh within the Bundelkhand region, holds strategic importance for industrial growth. The district is well-connected by **National Highway NH-35** and the **Bundelkhand Expressway**, enhancing road accessibility, while the **Chitrakoot Dham (Karwi) railway station** ensures strong rail connectivity to major routes. With seamless access to expressway, highway, and rail networks, the site is well-positioned to support manufacturing, warehousing, and logistics-driven economic development.

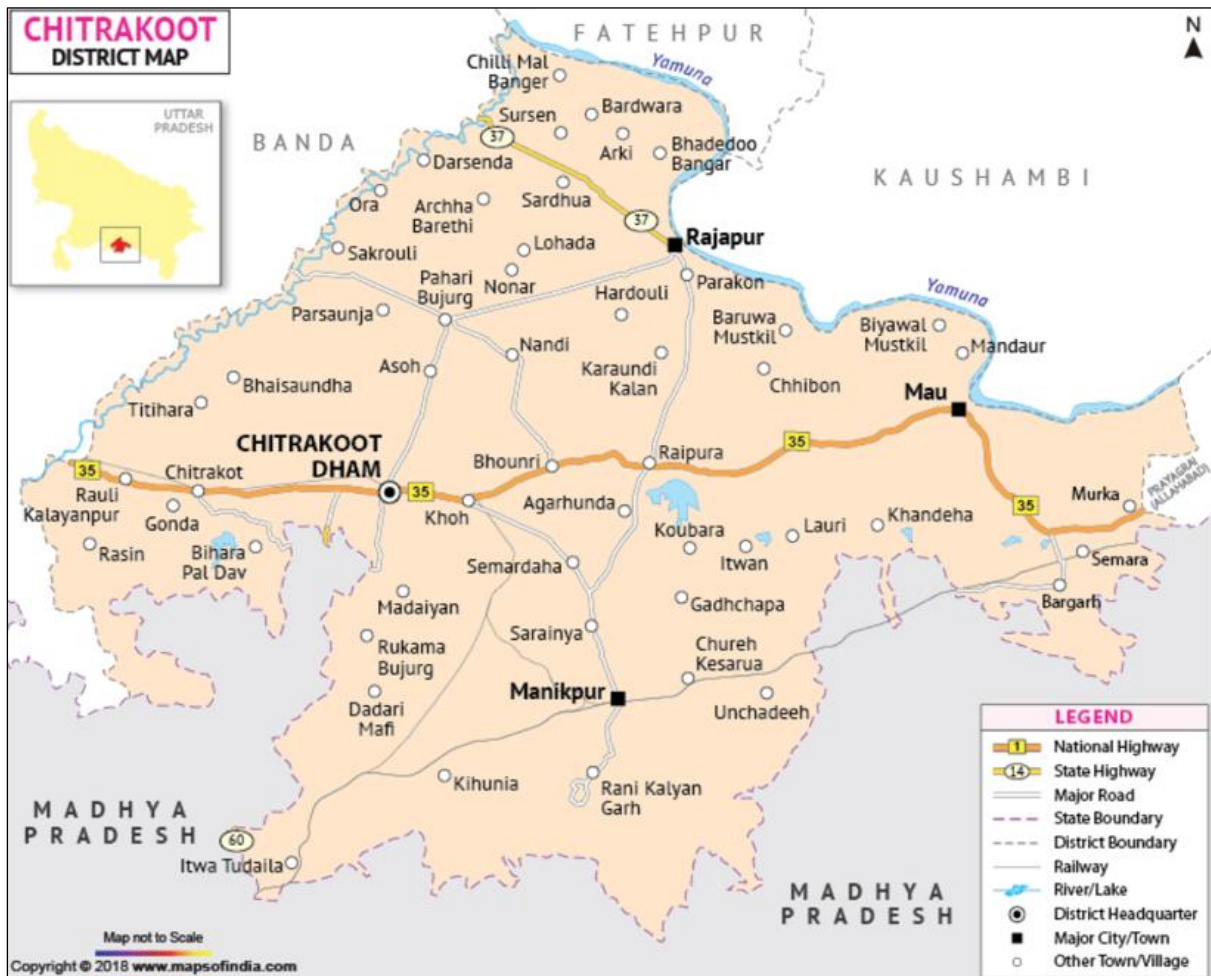


Figure 56: Location Map

The proposed Integrated Manufacturing and Logistics Cluster (IMLC) in **Chitrakoot** is located in the village **Kodar, Parsidhpur, Jamhil, Pathramani** and **Nonar** under **Tehsil Rajapur**, spanning an area of **765 acre**. It is strategically positioned approximately **35 km northeast of the Bundelkhand Expressway terminal point** and about **30 km from Chitrakoot city**, with close proximity to **National Highway NH-731A**, ensuring excellent regional connectivity.

The details of proposed site are provided in the table below –

Sl.No.	Particulars	Details
1	Development Type	Greenfield
2	Location	The proposed site in Tehsil Rajapur is located at the approximately 35 km northeast of the Bundelkhand Expressway terminal point and about 30 km from Chitrakoot city , with close proximity to National Highway NH-731A .
3	Lat/Long	25.364695 / 81.001339
4	Nearest Railway Station	<ul style="list-style-type: none"> Chitrakoot Dham: approx.20 km
5	Nearest ICD	<ul style="list-style-type: none"> ICD Kanpur – approx. 185 km
6	Nearest Airport	Prayagraj (Bamrauli) Airport: approx. 90 km
7	One District One Product (ODOP)	Wooden Toys
8	Major Industries	<ul style="list-style-type: none"> Wooden Toys manufacturing industries
9	Nearest Industrial Area	<ul style="list-style-type: none"> Bargarh-

15 UPDIC Nodes

15.1 Jhansi

Jhansi district is located in the southwestern part of Uttar Pradesh, India, with Jhansi city as its administrative headquarters. It is bordered by Jalaun district to the north, Lalitpur district to the east, Tikamgarh district (Madhya Pradesh) to the south, and Datia district (Madhya Pradesh) to the west. The Jhansi Defence Node is situated in **Garautha Tehsil, encompassing the villages of Erach, Genda Kabola, Jhabra, Kathari, Labhera** spanning over an area of **2686 acres** and benefits from strong multimodal connectivity.

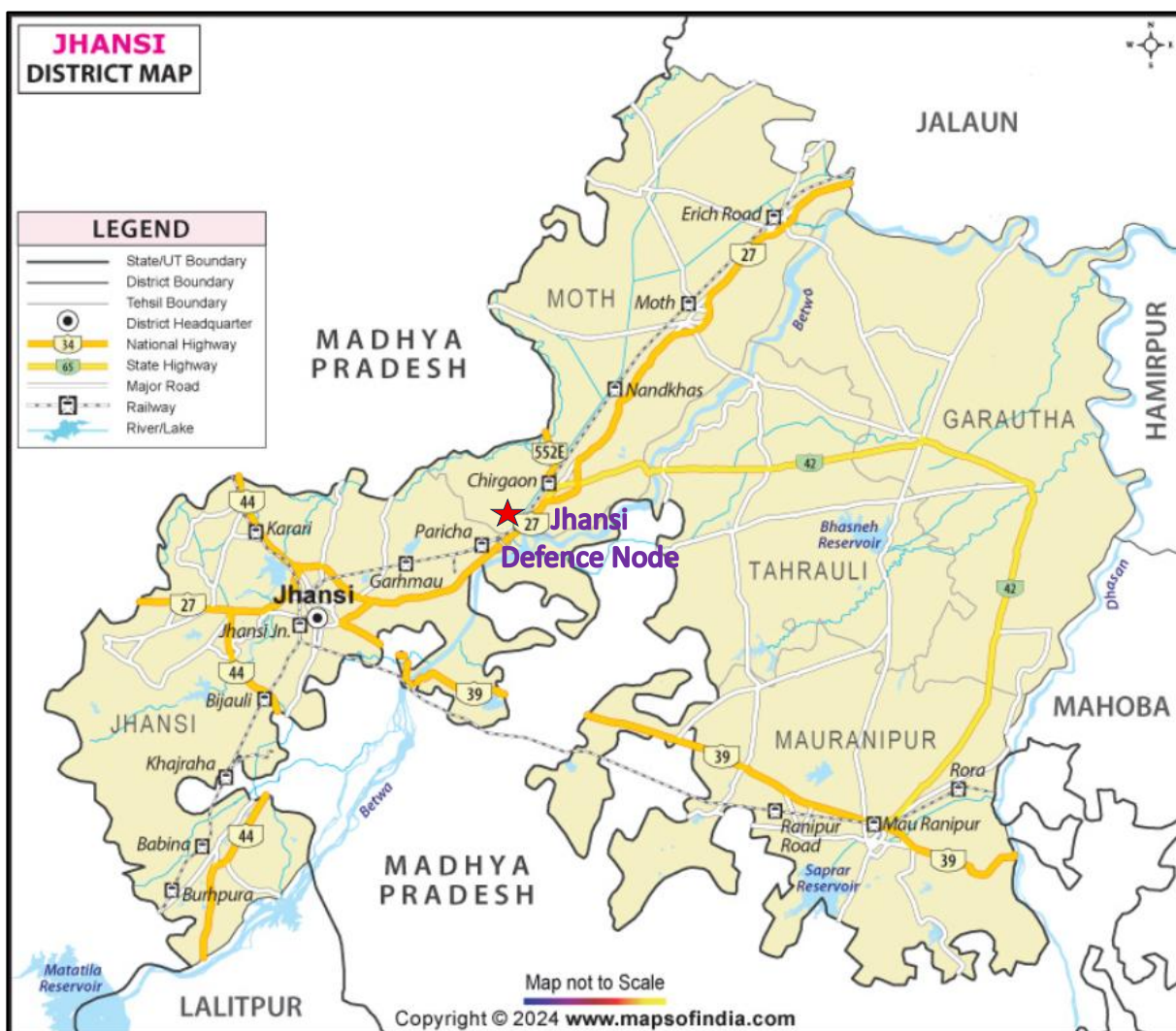


Figure 57: Location Map

It is located just **8.3 km from National Highway 27**, with plans to expand a 4-lane link from the node to the Bundelkhand Highway. The **Bundelkhand Expressway** lies approximately 40 km away, UPEIDA

is planning Jhansi-Link Expressway to connect to the Bundelkhand Expressway and approach road from the link expressway to the Defence Node. while the site fronts directly onto the Erach-Benda Road. Rail access is excellent, with Erach Railway Station only 3.5 km distant—complete with planned railway siding development—while Moth, Orai, and Jhansi stations are at 17 km, 54 km, and 70 km respectively, facilitating robust freight and passenger movement. Additionally, Jhansi Airport, located 80 km away, is planned for activation under the UDAN regional connectivity scheme, enhancing the node’s air transport linkages.



Figure 58: Location Map on Google Map

The details of proposed site are provided in the table below –

S. No	Description	
1	Development type	Greenfield
2	Location	Garautha Tehsil, encompassing the villages of Erach, Gendakabula, Jhabra, Kathari, Labhra
3	Lat/Long	LAT: 25.754102, LONG: 79.089570
4	Nearest Railway Station	Erach Railway Station – 3.5 Km
5	Nearest ICD	ICD Kanpur – 165 Km
6	Nearest Airport	Jhansi Airport – 80 Km

7	Major Industries	Missile propulsion systems, Carbon Composite shelter, Portable bunkers, UAVs, Loiter Munition, SDR sets, Multi grenade launcher & Ammunition etc.
8	Nearest Industrial Area	<ul style="list-style-type: none"> • Growth Centre Jhansi Phase I & II

15.2 Chitrakoot

Chitrakoot district is located in the southern part of Uttar Pradesh, India, with Chitrakoot town as its administrative headquarters. It is bordered by Banda district to the north, Hamirpur district to the east, Satna district (Madhya Pradesh) to the south, and Mahoba district to the west. The Chitrakoot Defence Node is strategically positioned in Karwi Tehsil, spanning across **813 acres**, featuring comprehensive multimodal connectivity and thoughtfully planned multi-phase development. **Phase I encompasses villages Bakta Bujurg, Khutora), while Phase II extends within villages Bakta Bujurg, Khutora, Pahari Bujurg.**

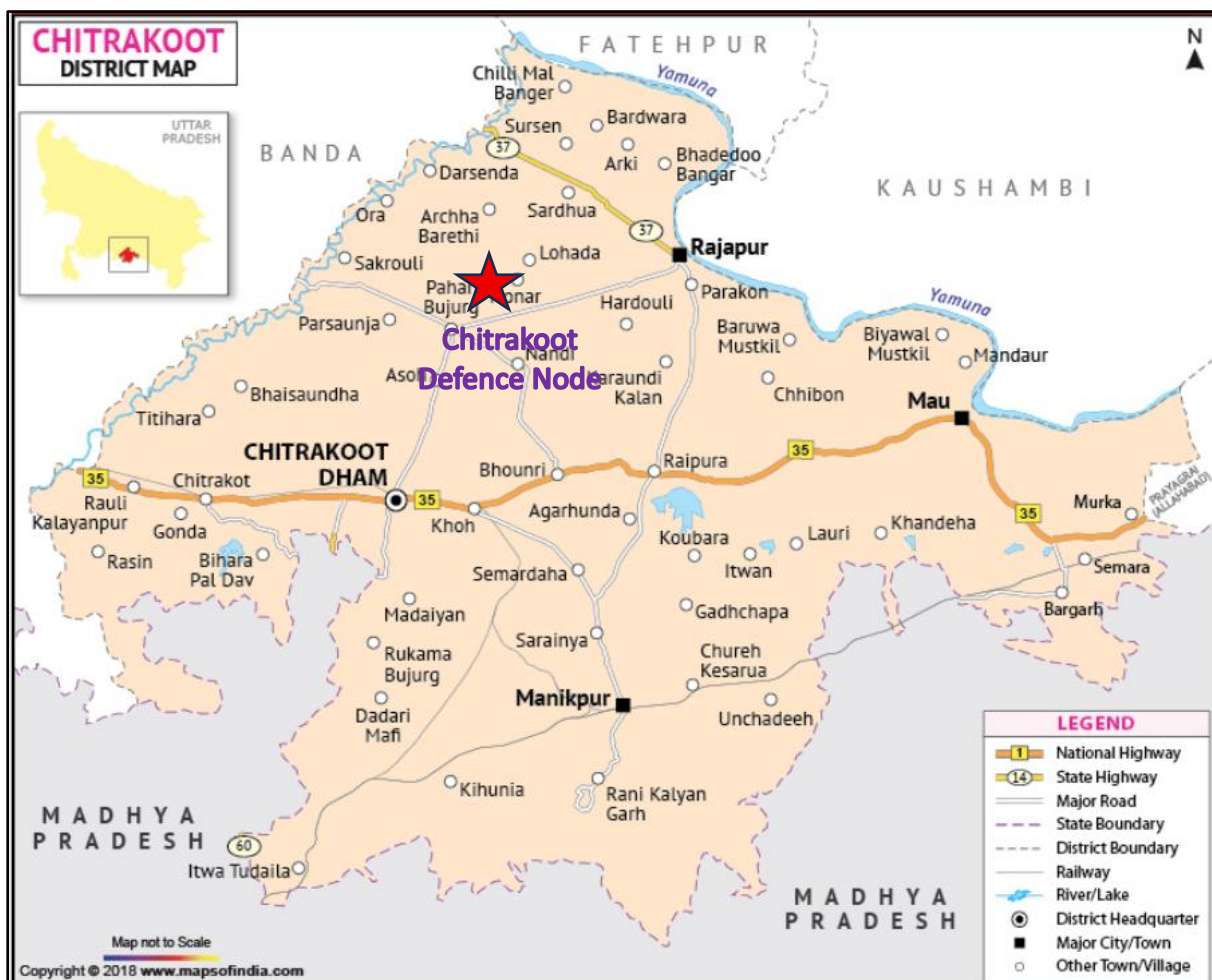


Figure 59: Location Map

EOI for 27 IMLC & 6 DIC

The site is located **on NH 731-A**. The node fronts the Karwi–Raipur district road, scheduled for a highway upgrade to improve links to Prayagraj and Chitrakoot district headquarters. It benefits from rail connectivity via Karwi Railway Station (18 km) and has regional proximity to Prayagraj Airport (90 km), Allahabad Airport (96 km), with Chitrakoot airport just 30 km away—soon to be activated under UDAN.

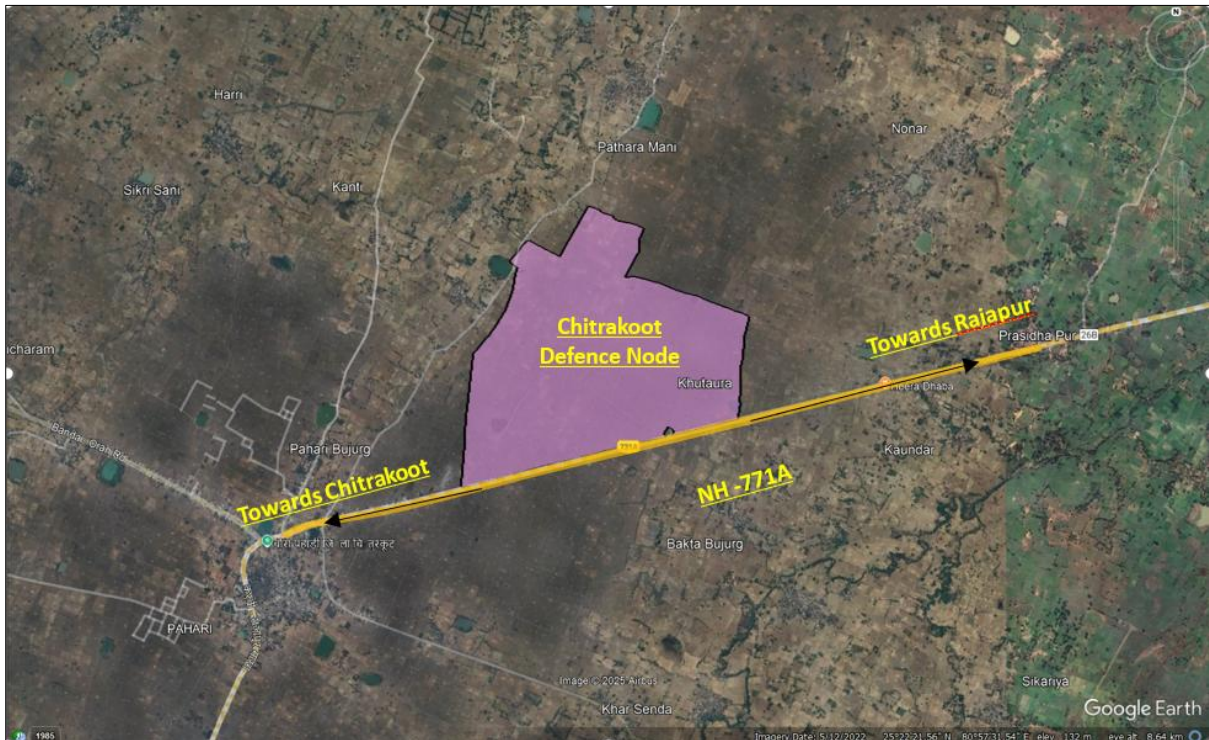


Figure 60: Location Map on Google Map

The details of proposed site are provided in the table below –

S. No	Description	
1	Development type	Greenfield
2	Location	Phase I – Karwi Tehsil (villages: Bakta Bujurg, Khutura), Phase II - Karwi Tehsil (villages: Bakta Bujurg, Khutura, Pahari Bujurg)
3	Lat/Long	LAT: 25.352093, LONG: 80.990984
4	Nearest Railway Station	Karwi Railway Station – 18 Km
5	Nearest ICD	ICD Kanpur – approx. 180 Km
6	Nearest Airport	Chitrakoot Airport – 30 Km
7	Major Industries	Drones, Counter Drone, Military Autonomous Systems Components & Systems

8	Nearest Industrial Area	<ul style="list-style-type: none"> • Bargarh – I Industrial Area • Mahoba Industrial Area
---	-------------------------	---

15.3 Agra

Agra district is located in the western part of Uttar Pradesh, India, with Agra city as its administrative headquarters. It is bordered by Mathura district to the north, Firozabad district to the east, Dholpur district (Rajasthan) to the south, and Bharatpur district (Rajasthan) to the west. The Agra Defence Node, located in **Sadar Tehsil village Bijhamai**, spanning across **304 acres**, enjoys a strategic location with exceptional multimodal connectivity.



Figure 61: Location Map

The site is directly along the **Agra–Lucknow Expressway**, and lies in close proximity to the Yamuna Expressway, enhancing its integration with the state’s high-speed road network. A 30-metre-wide approach road is under development to ensure seamless connectivity at **chainage 5 km to 7 km** of the expressway, facilitating efficient freight movement. The node’s position is further strengthened by its excellent links to national highways and rail infrastructure, as well as its direct connectivity to New Delhi, the national capital, thereby amplifying its logistical and economic advantages.



Figure 62: Location Map on Google Map

The details of proposed site are provided in the table below –

S. No	Description	
1	Development type	Greenfield
2	Location	Sadar Tehsil village Bijhamai
3	Lat/Long	LAT: 27.140218, LONG: 78.15014
4	Nearest Railway Station	Agra Fort Railway Station - 18 Km Fatehabad Railway Station – 24 Km
5	Nearest ICD	ICD Dadri – approx. 200 Km
6	Nearest Airport	Kheria (Domestic Airport)- 20 Km Indira Gandhi (International Airport)-230 Km
7	Major Industries	Airborne programmable radar for aerostat, combustible materials, Manufacturing unit and training sector for live fire and virtual combat training systems etc
8	Nearest Industrial Area	<ul style="list-style-type: none"> • Fatehabad Industrial Area • Mathura Industrial Area

15.4 Aligarh

Aligarh district is located in the western part of Uttar Pradesh, India, with Aligarh city as its administrative headquarters. It is bordered by Bulandshahr district to the north, Hathras district to the east, Etah district to the south, and Mathura district to the west. The Aligarh Defence Node is strategically distributed across two phases, offering robust infrastructure and excellent connectivity. Phase I spans **Khair Tehsil (villages: Andala, Haibatpur)** and **Kol Tehsil (villages: Kiratpur Nimana, Karsua)** across **216 acres**. Phase II is entirely located within **Kol Tehsil (villages: Jasratput, Julupur-Shihar)** spanning across **217 acres**.



Figure 63: Location Map

The node is positioned along the **National Highway 34**. It is well-supported by rail and air connectivity, with Aligarh Junction railway station only 16 km away and Jewar International Airport located 50 km from the site. Additionally, Aligarh Airport has commenced operations under the UDAN scheme with flights to Lucknow, Azamgarh, and Chitrakoot, and is expected to be linked with Delhi in the near future.



Figure 64: Location on Google Map

The details of proposed site are provided in the table below –

S. No	Description	
1	Development type	Greenfield
2	Location	Phase I - Khair Tehsil (villages: Andala, Haibatpur) and Kol Tehsil (villages: Kiratpur Nimana, Karsua). Phase II - Kol Tehsil (villages: Jasratput, Julupur-Shihar).
3	Lat/Long	Phase I - LAT: 27.915132, LONG: 77.936698 Phase II - LAT: 27.833610, LONG: 78.197535
4	Nearest Railway Station	Aligarh Jn Railway Station - 16 kms
5	Nearest ICD	ICD Dadri – approx. 100 Km
6	Nearest Airport	Noida International Airport (Jewar) airport - 50 kms (Aligarh airport to relate to flights from Delhi)
7	Major Industries	Drones, Electronic Warfare Sensors, Radio Direction Finders, Electronic Warfare System design, manufacturing of casing and its accessories required for Medium Caliber Ammunitions, etc.
8	Nearest Industrial Area	<ul style="list-style-type: none"> • Gabhana Industrial Area • Hathras Industrial Area

15.5 Lucknow

Lucknow district is located in the central part of Uttar Pradesh, India, with Lucknow city as its administrative headquarters. It is bordered by Barabanki district to the east, Unnao district to the west, Hardoi district to the northwest, and Sitapur district to the north. The Lucknow Defence Node, located in **Sarojini Nagar Tehsil village Bhatgaon**, spanning across **396 acres**, is strategically positioned with robust multi-modal infrastructure, making it a high-potential site under the Uttar Pradesh Defence Industrial Corridor (UPDIC).

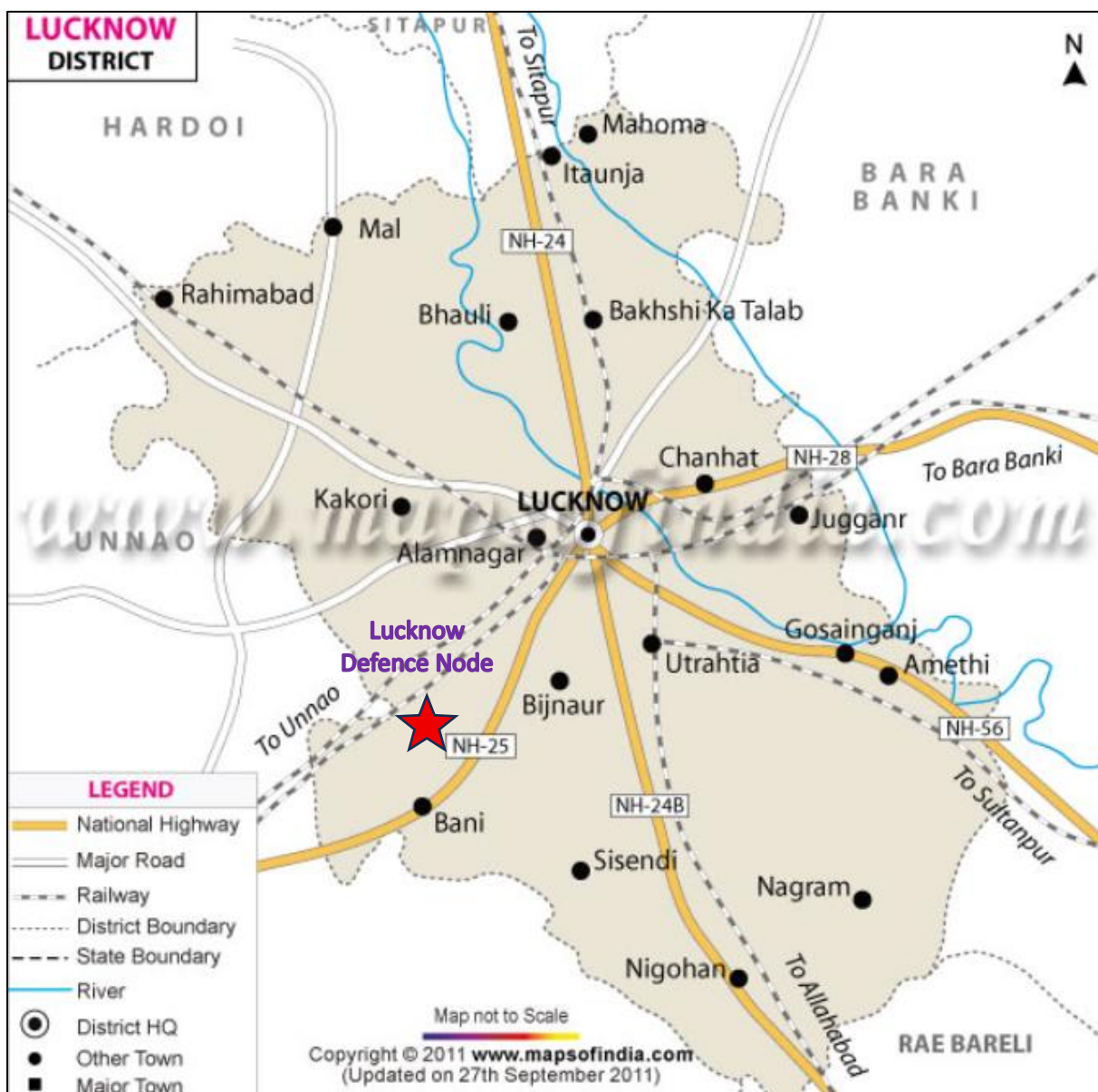


Figure 65: Location Map

The node lies just **7.5 km from National Highway 27** and 4 km from Kisan Path, a major peripheral express route that enhances intra-city and regional connectivity. An approach road is under development to directly link the node with these major arterial routes. In terms of rail access, the site

EOI for 27 IMLC & 6 DIC

is merely 2 km from Harauni Railway Station and 21 km from Lucknow Junction, providing seamless freight and passenger connectivity. Air connectivity is equally strong, with Chaudhary Charan Singh International Airport just 12 km away, facilitating swift logistics movement and executive access.



Figure 66: Location on google Map

The details of proposed site are provided in the table below –

S. No	Description	
1	Development type	Greenfield
2	Location	Tehsil - Sarojini Nagar, Village - Bhatgaon
3	Lat/Long	LAT: 26.719865, LONG: 80.772062
4	Nearest Railway Station	Harauni Railway Station – 2 Km Lucknow Railway Station – 21 Km
5	Nearest ICD	ICD Panki – approx. 90 Km
6	Nearest Airport	Lucknow Airport – 12 Km
7	Major Industries	Titanium Castings, NG missile Systems, Specialized Defence Packaging, Drones and Unmanned Aerials Vehicle, etc.
8	Nearest Industrial Area	<ul style="list-style-type: none"> • UPSIDC Small Scale Industrial Area • Sitapur Road Industrial Area • Amausi Industrial Area • Kanpur road Industrial Area

15.6 Kanpur

Kanpur district is located in the central part of Uttar Pradesh, India, with Kanpur city as its administrative headquarters. It is bordered by Unnao district to the north, Fatehpur district to the east, Jalaun district to the south, and Hamirpur district to the west. The Kanpur Defence Node is strategically located in **Tehsil Narwal, encompassing Village Sarh**, and is exceptionally well-connected by multi-modal transport infrastructure. **The site lies on SH-17 and is flanked by NH-34 on the west (17kms) and NH-19 on the eastern side (15 kms)**, spanning across **551 acres**, enhancing surface mobility for logistics and industrial operations.

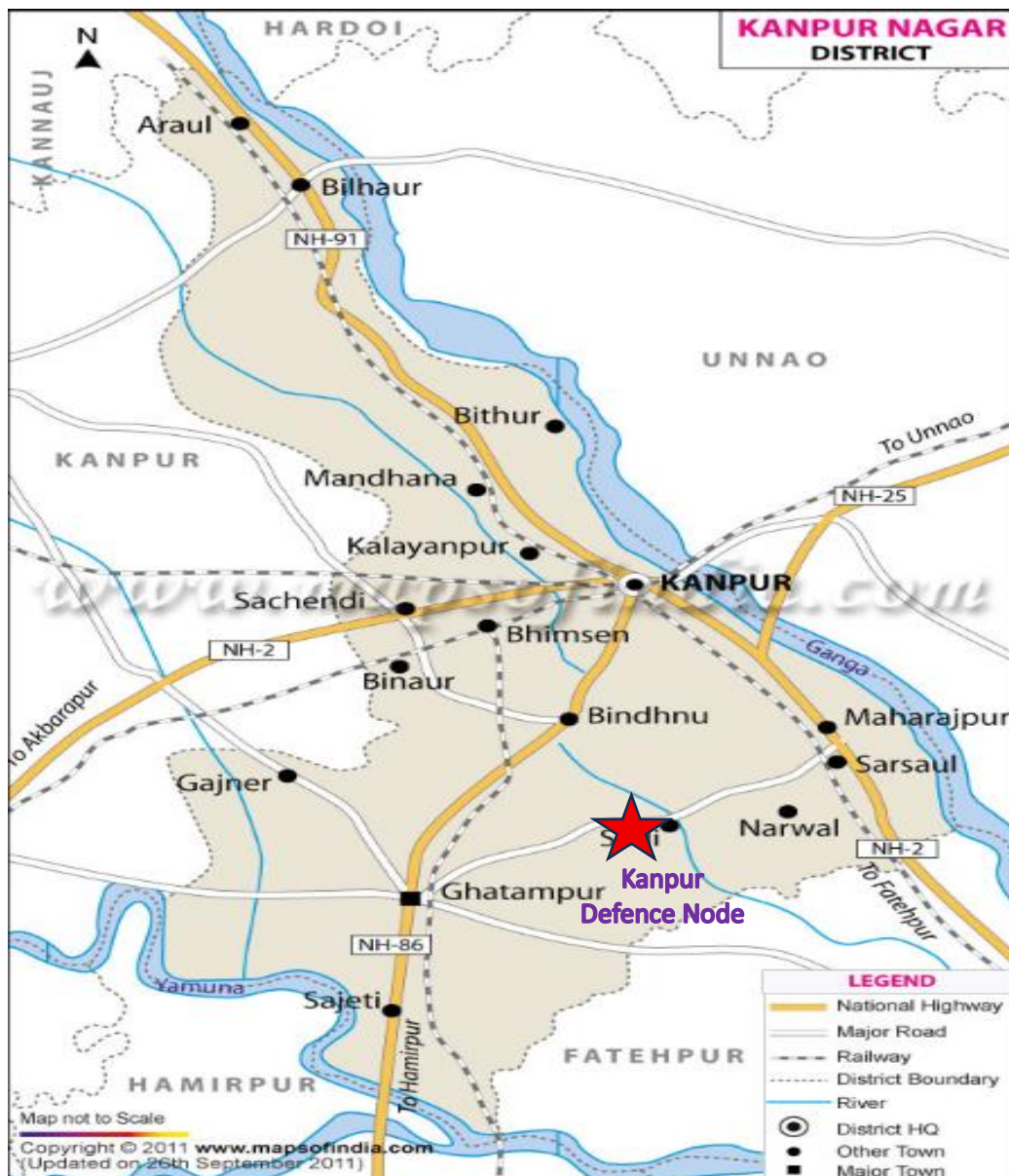


Figure 67: Location Map

EOI for 27 IMLC & 6 DIC

Internal access is further supported by the Sarh Kudni Road, which runs within the node itself. Rail connectivity is robust, with Sarsaul Railway Station only 16 km away and Kanpur Central at a distance of 32 km, offering access to major freight and passenger routes. The node is also within 35 km of Kanpur Airport, facilitating air logistics and executive access. This confluence of national highways, expressways, rail lines, and air access makes the Kanpur node a prime location for defence manufacturing and allied investments under UPDIC.



Figure 68: Location on Google Map

The details of proposed site are provided in the table below –

S. No	Description	
1	Development type	Greenfield
2	Location	Sadar Tehsil village Bijhamai
3	Lat/Long	LAT: 27.140218, LONG: 78.15014
4	Nearest Railway Station	Agra Fort Railway Station - 18 Km Fatehabad Railway Station – 24 Km
5	Nearest ICD	ICD Dadri – approx. 200 Km
6	Nearest Airport	Kheria (Domestic Airport)- 20 Km Indira Gandhi (International Airport)-230 Km

EOI for 27 IMLC & 6 DIC

7	Major Industries	Small arms and ammunitions, defence textiles, manufacturing plants for LEO and GEO satellites, manufacturing and aerospace parts, etc.
8	Nearest Industrial Area	<ul style="list-style-type: none">• Fatehabad Industrial Area• Mathura Industrial Area

16 Uttar Pradesh Sectoral Policies & Government Order

S.No.	Policy	Web Link
1	Uttar Pradesh Industrial Investment & Employment Promotion Policy 2022	https://invest.up.gov.in/uttar-pradesh-industrial-investment-employment-promotion-policy-2022/
2	Uttar Pradesh Defence & Aerospace Unit & Employment Promotion Policy 2024	https://invest.up.gov.in/defence-policy-2025/
3	Uttar Pradesh foreign direct investment (FDI), foreign capital investment (FCI), Fortune Global 500 & Fortune India 500 Companies Investment Promotion Policy 2023	https://invest.up.gov.in/incentive-policy-2023/
4	Uttar Pradesh Aircraft Maintenance, Repair, And Overhaul Policy – 2022	https://invest.up.gov.in/uttar-pradesh-aircraft-maintenance-repair-and-overhaul-policy/
5	Uttar Pradesh Warehousing & Logistics Policy 2022	https://invest.up.gov.in/uttar-pradesh-warehousing-logistics-policy-2022/
6	Uttar Pradesh Civil Aviation Policy 2017	https://invest.up.gov.in/uttar-pradesh-civil-aviation-promotion-policy-2017/
7	Uttar Pradesh Multi Modal Logistics Park Policy 2024	https://invest.up.gov.in/uttar-pradesh-multi-modal-logistics-park-policy-2024/
8	Bioplastic Industry Policy 2024 in Uttar Pradesh	https://invest.up.gov.in/bioplastic-industry-policy-2024-in-uttar-pradesh/
9	Uttar Pradesh Semiconductor Policy 2024	https://invest.up.gov.in/uttar-pradesh-semiconductor-policy-2024/
10	Uttar Pradesh Green Hydrogen Policy 2024	https://invest.up.gov.in/green-hydrogen-policy/
11	Uttar Pradesh Food Processing Industry Policy 2023	https://invest.up.gov.in/uttar-pradesh-food-processing-industry-policy-2023/
12	UP Pharmaceutical and Medical Device Policy, 2023	https://invest.up.gov.in/up-pharmaceutical-and-medical-device-policy-2023/
13	Uttar Pradesh Micro, Small & Medium Enterprises Promotion Policy 2022	https://invest.up.gov.in/uttar-pradesh-micro-small-medium-enterprises-promotion-policy-2022/
14	Uttar Pradesh Textile and Garmenting Policy 2022	https://invest.up.gov.in/up-textile-and-garmenting-policy-2022/
15	Uttar Pradesh Dairy Development & Milk Product Promotion Policy 2022	https://invest.up.gov.in/uttar-pradesh-dairy-farm-development-and-dairy-products-promotion-policy-2022/
16	Uttar Pradesh Poultry Development Policy-2022	https://invest.up.gov.in/uttar-pradesh-poultry-development-policy-2022/
17	Uttar Pradesh Electric Vehicle Manufacturing Policy 2022	https://invest.up.gov.in/uttar-pradesh-electric-vehicle-manufacturing-policy-2022/
18	Uttar Pradesh Policies & Government Order	https://invest.up.gov.in/policies/
19	Uttar Pradesh Higher Education Incentive Policy 2024	https://invest.up.gov.in/higher-education-policy-2024/
20	Uttar Pradesh Film Policy 2023	https://invest.up.gov.in/film-policy-2023/
21	Uttar Pradesh Sports Policy 2023	https://invest.up.gov.in/sports-policy-2023/

EOI for 27 IMLC & 6 DIC

22	Uttar Pradesh Data Centre Policy 2021	https://invest.up.gov.in/up-data-centre-policy-2021/
23	Uttar Pradesh Startup Policy 2020 (First Amendment-2022)	https://invest.up.gov.in/uttar-pradesh-startup-policy-2020-first-amendment-2022/
24	Uttar Pradesh Electronics Manufacturing Policy 2020	https://invest.up.gov.in/uttar-pradesh-electronics-manufacturing-policy-2020/
25	Uttar Pradesh IT and ITeS Policy 2022	https://invest.up.gov.in/it-and-ites-policy-of-uttar-pradesh-2022/
26	Uttar Pradesh bio energy policy 2022	https://invest.up.gov.in/bio-energy-enterprises-promotion-programme-2022/
27	Uttar Pradesh Agriculture Export Policy 2019	https://invest.up.gov.in/uttar-pradesh-agriculture-export-policy-2019/
28	Private Medical College (Unserved Districts) Scheme 2022	https://invest.up.gov.in/scheme-for-government-support-to-private-investment-in-development-of-medical-college-in-unserved-districts/
29	Uttar Pradesh Tourism Policy 2022	https://invest.up.gov.in/tourism-policy-2022/
30	Uttar Pradesh Solar Energy Policy 2022	https://invest.up.gov.in/solar-energy-policy-2022/
31	Uttar Pradesh Export Promotion Policy 2020 - 25	https://invest.up.gov.in/export-promotion-policy/
32	Uttar Pradesh Township Policy 2023	https://invest.up.gov.in/up-township-policy/
33	Uttar Pradesh Policy 2023-24	https://invest.up.gov.in/promulgation-of-excise-policy/
34	Uttar Pradesh Land/Revenue	https://invest.up.gov.in/uttar-pradesh-land-revenue/

17 Eoi Submission Form

To ensure the effective planning, development, and allotment of tailor-made industrial plots within the proposed **Integrated Manufacturing and Logistics Clusters (IMLCs) and UPDIC nodes**, UPEIDA invites all interested investors and developers to submit their detailed investment preferences and requirements. We kindly request bidders to fill in the information regarding their organization, interest about IMLC/UPDIC, mode of interest (Tailor made plot/Bulk land (node) purchase/ Development on PPP mode) top five preferred locations across key expressways (Ganga, Bundelkhand, Agra-Lucknow, Purvanchal, and Gorakhpur Link)/ UPDIC nodes desired plot size, proposed investment, production plans, logistics and utility needs, and any special infrastructure requirements.

By doing so, bidders will gain priority consideration as preferred investors, securing early access to premium, well-planned industrial, Logistic and warehousing spaces and ensuring their place at the forefront of Uttar Pradesh's transformative industrial development.

For any queries or to submit these details, please contact:

Uttar Pradesh Expressways Industrial Development Authority (UPEIDA),

5th Floor, Block-A, PICUP Bhawan, Vibhuti Khand, Gomti Nagar, Lucknow, U.P.-226010

Phone: +91-9935779991

Camp Office: - 0522-4004527/4004523

Website: <https://upeida.up.gov.in>

Email: imlc.upeida@gmail.com

S.NO	DETAILS OF INVESTORS/DEVELOPERS AND THEIR REQUIREMENTS	
1	Investor/Industry Details	
	a. Name of Applicant	
	b. Company Name	
	c. Company Address for communication	
	d. Contact Mobile Number	
	e. Email	
	f. Website	
2	Proposed Development Model	
	i) IMLC or UPDIC	
	ii) Tailormade plots/ Bulk Land (Node) purchase/ Development of Node on PPP	

EOI for 27 IMLC & 6 DIC

3 (i)	Desired locations for investment (please mention a maximum of 5, in order of preference) (IMLC)		
	<i>On Expressway</i>	<i>Locations</i>	<i>Preference Number</i>
	<i>Ganga Expressway</i>	1. Meerut	
		2. Hapur	
		3. Sambhal	
		4. Hardoi	
		5. Amroha	
		6. Badaun	
		7. Shahjahanpur	
		8. Unnao	
		9. Raebareli	
		10. Pratapgarh	
		11. Prayagraj	
	<i>Bundelkhand Expressway</i>	12. Chitrakoot	
		13. Banda	
		14. Hamirpur	
		15. Mahoba	
		16. Jalaun	
		17. Auraiya	
	<i>Agra - Lucknow Expressway</i>	18. Firozabad	
		19. Etawah	
		20. Kannauj	
	<i>Purvanchal Expressway</i>	21. Barabanki	
		22. Amethi	
		23. Sultanpur	
		24. Ghazipur	
		25. Ambedkar Nagar (Purvanchal Exp.)	
	<i>Gorakhpur Link Expressway</i>	26. Gorakhpur	
		27. Ambedkar Nagar (Gorakhpur Link Exp.)	
3 (ii)	Desired locations for investment (please mention a maximum of 3, in order of preference) (UPDIC)		
	UPDIC Nodes	1. Agra	
		2. Aligarh	

EOI for 27 IMLC & 6 DIC

		3. Kanpur	
		4. Lucknow	
		5. Jhansi	
		6. Chitrakoot	
4	Plot Size Requirement		
	a) Total Plot Area (in Sqmt)		
	b) Total Built up area proposed to be constructed		
	c) Expected FAR to be achieved /constructed		
	d) Expected ground coverage to be achieved/constructed (in Sqmt)		
5	Proposed Investment (In Rs. Crore)		
6	Whether FDI Investment (if yes please mention amount in Rs. Crore)		
7	Expected Direct Employment Generation		
8 A	Product Details (if applicable)		
	a) Proposed Product to be Manufactured		
	b) Proposed production capacity		
8 B	Warehouse & Logistic Unit/HUB		
	a) Proposed Project Details		
	b) Proposed Capacity		
	c) Broad List of activities Proposed within unit/parks		
9	Industrial water required/Day (In KLD)		
10	Power Demand (In KVA)		
11	Additional Details for PPP Mode Participants (if applicable)		
a	Proposed PPP Model (e.g., DBFOT, BOT with Revenue Sharing)		
b	Concession Period Proposed (in Years)		
c	Proposed Revenue Generation Model (e.g., lease rental, service/user charges, long-term sub-leases)		

EOI for 27 IMLC & 6 DIC

d	Expected IRR	
e	Willingness to Develop Supporting Infrastructure (internal roads, STP, ETP, utilities – Yes/No)	
f	O&M Duration Commitment (Years)	
g	Any Proposed Revenue Sharing Structure or Annuity Expectations	
13	Specify if any other specific requirement or facilities required	